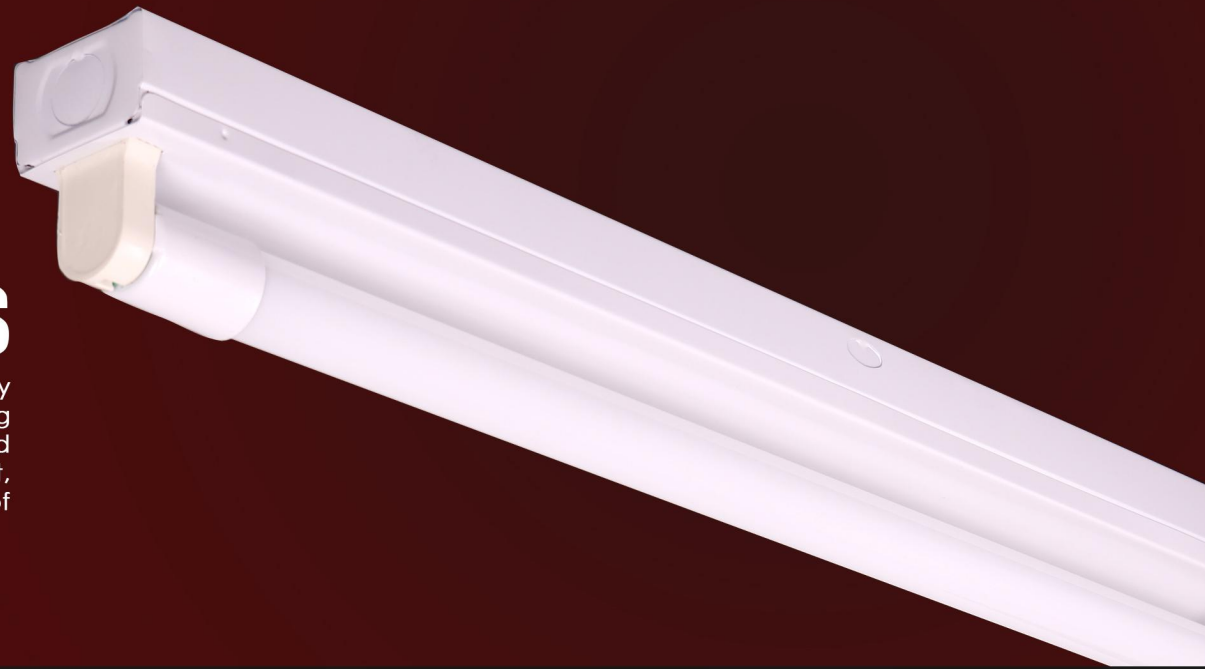




ASAHI LIGHTING

Fluorescent Fixtures

Fluorescent lighting is highly versatile type of lighting that you most likely encounter at the office, school, or grocery store. Fluorescent light housing or fixture housing is an enclosure container specifically designed to hold and protect necessary electrical connections, Fluorescent lamps, ballast, reflectors and other components required for the proper functioning of fluorescent lighting systems.



ASA-1009



ASA-1009 1x18w

Included: Housing only with Lamp Holder and Wiring
Description: Box Type Slim
Light Compatibility: T8 LED Tube (1x 8w /9w /10w)
Dimension: L 625mm x W50mm x H32mm



ASA-1009 1x36w

Included: Housing only with Lamp Holder and Wiring
Description: Box Type Slim
Light Compatibility: T8 LED Tube (1x 16w /18w /20w)
Dimension: L 1230mm x W50mm x H32mm



ASA-1009 2x36w

Included: Housing only with Lamp Holder and wiring.
Description: Box Type Slim
Light Compatibility: T8 LED Tube (2x 16w /18w /20w)
Dimension: L 1230mm x W50mm x H32mm

ASA-1010



ASA-1010 1x18w

Included: Housing only with Lamp Holder and Wiring for NPF
Description: De Luxe Box Type
Light Compatibility: T8 Fluorescent Tube (1x18w)
T8 LED Tube (1x8w / 9w / 10w)
Dimension: L 615mm x W54mm x H45mm



ASA-1010 2x18w

Included: Housing only with Lamp Holder and Wiring
Description: De luxe Box Type
Light Compatibility: T8 Fluorescent Tube (2 x18w)
T8 LED Tube (8w / 9w /10w)
Dimension: L 615mm x W55mm x H45mm



ASA-1010 2x36w

Included: Housing only with Lamp Holder and Wiring.
Description: De Luxe Box Type
Light compatibility: T8 LED Tube (2x 16w /18w / 20w)
Dimension: L 1225mm x W55mm x H45mm

ASA-1011



ASA-1011 1x36w (POWDER COATED REFLECTOR)

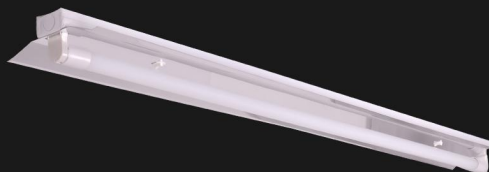
Included: Housing only with Lamp Holder and Wiring
Description: Industrial Type with Powder coated reflector.
Light Compatibility : T8 LED Tube (1 x16w / 18w / 20w)
Dimension: L 1230mm x W 130mm x H 68mm



ASA-1011 2x36w (POWDER COATED REFLECTOR)

Included: Housing only with Lamp Holder and Wiring
Description: Industrial Type with Powder coated reflector.
Light Compatibility : T8 LED Tube (2 x16w / 18w / 20w)
Dimension: L 1230mm x W 130mm x H 68mm

ASA-1012



ASA-1012 1x36w (MIRRORIZED REFLECTOR)

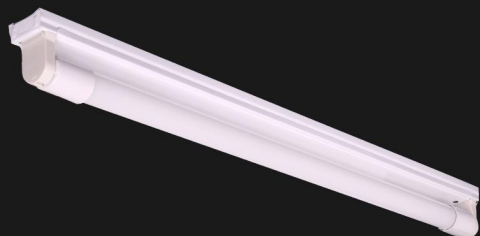
Included: Housing only with Lamp Holder and Wiring
Description: Industrial Type with Aluminum mirrorized reflector.
Light Compatibility : T8 LED Tube (1 x16w / 18w / 20w)
Dimension: L 1230mm x W 130mm x H 68mm



ASA-1012 2x36w (MIRRORIZED REFLECTOR)

Included: Housing only with Lamp Holder and Wiring
Description: Industrial Type with Aluminum mirrorized reflector.
Light Compatibility : T8 LED Tube (2 x16w / 18w / 20w)
Item Size: L 1230mm x W 170mm x H 68mm

ASA-1017



ASA-1017 1x8w

Included: Housing only with Lamp holder and Wiring for LED
Description: Box Type
Light Compatibility: T8 LED Tube (1 x 8w / 9w / 10w)
Dimension: L 620mm x W 33mm x H 50mm



ASA-1017 1x16w

Included: Housing only with Lamp holder, and Wiring for LED
Description: Box Type
Light Compatibility: T8 LED Tube (1 x16w / 18w /20w)
Dimension: L 1250mm x W 33mm x H 50mm





Led Bulbs

The light-emitting diode (LED) is today's most energy-efficient and rapidly-developing lighting technology. Quality LED light bulbs last longer, are more durable, and offer comparable or better light quality than other types of lighting.



E14



ALB-78SMD E14 12W

Color Family: Tri Color
Description: Shadowless. Candle bulb.
Light Source: SMD LED (78 SMD)
Dimension: Ø 33mm x H 98mm
Power Consumption: 12w
Voltage: 220V
Base Type: E-14



ALB-100SMD E14 18W

Color Family: Tri Color
Description: Shadowless. Candle bulb.
Light Source: SMD LED (100 SMD)
Dimension: Ø 33mm x H 113mm
Power Consumption: 18W
Voltage: 220V
Base Type: E-14



ALB-C35 E14 4W

Color Family: Warm White 3000k
Description: Clear glass candle bulb.
Light Source: LED Filament
Dimension: Ø 35mm x H 95mm
Power Consumption: 4W
Voltage: 220V
Base Type: E-14



ALB-TURN TIP FILAMENT E14 4W

Color Family: Warm White 3000k
Description: Clear glass candle bulb
Light Source: LED Filament
Dimension: Ø 35mm x H 115mm
Power Consumption: 4W
Voltage: 220V
Base Type: E-14

E27 Filament Bulbs



ALB-C35 E27 4W

Color Family: Warm White 3000k
Description: Clear glass candle bulb
Light Source: LED filament
Dimension: Ø 35mm x H 92mm
Power Consumption: 4W
Voltage: 220V
Base Type: E-27



ALB-JH-B

Color Family: Warm White 2200k
Description: Glass material
Light Source: LED Filament
Dimension: Ø 5mm x W 58mm x H 157mm
Power Consumption: 4W
Voltage: 220-240V
Base Type: E27



ALB-JH-T 4W

Color Family: Warm White 2200k
Description: Glass material.
Light Source: LED Filament
Dimension: Ø 5mm x W 33mm x H 198mm
Power Consumption: 4W
Voltage: 220-240V
Base Type: E-27



ALB-ST64 6W

Color Family: Warm White 3000k
Description: Dimmable. Clear glass.
Light Source: LED Filament
Dimension: Ø 65mm x H 144mm
Power Consumption: 6W
Voltage: 220V
Base Type: E-27



ALB-T30 CLR 4W

Color Family: Warm White 1800k
Description: Tubular Clear glass
Light Source: LED Filament
Dimension: Ø 30mm x H 230mm
Power Consumption: 4W
Voltage: 220V
Base Type: E-27



ALB-G45 CL-F 2W

Color Family: Warm White 3000k
Description: G45 Clear glass
Light Source: LED Filament
Dimension: Ø 45mm x H 75mm
Power Consumption: 2W
Voltage: 220V
Base Type: E-27

G95



ALB-G95 7W

Color Family: Warm White 3000k
Description: G95 Frosted
Light Source: LED
Dimension: Ø 95mm x H 125mm
Power Consumption: 7W
Voltage: 220V
Base Type: E27

G125



ALB-G125 6W

Color Family: Warm White 3000k
Description: Dimmable. Clear glass.
Light Source: LED Filament
Dimension: Ø 125mm x H 173mm
Power Consumption: 6W
Voltage: 220V
Base Type: E-27



ALB-G125 7W FROSTED

Color Family: Warm White 3000k
Description: Frosted glass.
Light Source: LED
Dimension: Ø 125mm x H 173mm
Power Consumption: 7W
Voltage: 220V
Base Type: E-27

SMD BULB



ALB-78SMD E27 12W

Color Family: Tri Color
Description: Shadowless. Candle bulb.
Dimension: Ø 33mm x H 94mm
Light Source: LED SMD (78 SMD)
Power Consumption: 12w
Voltage: 220V
Base Type: E-27



ALB-100SMD E27 18W

Color Family: Tri Color
Description: Shadowless. Candle bulb.
Light Source: SMD LED (100 SMD)
Dimension: Ø 33mm x H 110mm
Power Consumption: 18W
Voltage: 220V
Base Type: E-27





G4 Bulbs



ALB-G4 2W 12V

Color Family: Warm White 3000k
Description: Silicone-coated peanut bulb
Light Source: LED COB
Dimension: Ø 10mm x H 36mm
Power Consumption: 2W
Voltage: 12V
Base Type: G4



ALB-G4 2W 220V

Color Family: Warm White 3000k
Description: Silicone-coated peanut bulb
Light Source: LED COB
Dimension: Ø 10mm x H 36mm
Power Consumption: 2W
Voltage: 220V
Base Type: G4



ALB-G4 COB GLASS 4W

Color Family: Warm White 3000k
Description: Body in glass material
Light Source: LED COB
Dimension: Ø 11mm x H 62mm
Power Consumption: 4W
Voltage: 220v
Base Type: G4



ALB-G9 COB Glass 4W

Color Family: Warm White 3000k
Description: Body in glass material.
Light Source: LED COB
Dimension: Ø 16mm x H 59mm
Power Consumption: 4W
Voltage: 220v
Base Type: G9

LED MODULES



ALB Ring Shape Module 24W

Color Family: Daylight 6000k
Description: LED Ceiling lamp module w/ Magnet.
Dimension: Ø 193mm x H 17mm
Power Consumption: 24w
Voltage: 165-265V



ALB Ring Shape Module 30W

Color Family: Daylight 6000k
Description: LED Ceiling lamp module w/ Magnet.
Dimension: Ø 215mm x H 17mm
Power Consumption: 30w
Voltage: 165-265V



ALB Ring Shape Module 36W

Color Family: Daylight 6000k
Description: LED Ceiling lamp module w/ Magnet.
Dimension: Ø 230mm x H 17mm
Power Consumption: 36w
Voltage: 165-265V

ALUMINUM PCB



ALUM PCB-001 12W DL

Color Family: Daylight 6000k
Description: LED Ceiling lamp module w/ Magnet.
Light Source: LED SMD
Dimension: L 80mm x W 80mm x H 8mm
Power Consumption: 12W
Voltage: 220V



ALUM PCB-001 12W TRI-COLOR

Color Family: Tri Color
Description: LED Ceiling lamp module w/ Magnet.
Light Source: LED SMD
Dimension: L63mm x W 63mm x H 12mm
Power Consumption: 12W
Voltage: 220V



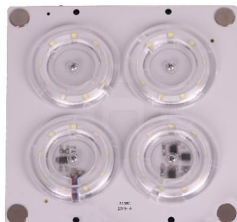
ALUM PCB-001 24W DL

Color Family: Daylight 6000k
Description: LED Ceiling lamp module w/ Magnet.
Light Source: LED SMD
Dimension: L 160mm x W 80mm x H 8mm
Power Consumption: 24W
Voltage: 220V



ALUM PCB-001 24W TRI-COLOR

Color Family: Tri Color
Description: LED Ceiling lamp module w/ Magnet.
Light Source: LED SMD
Dimension: L160mm x W 80mm x H 14mm
Power Consumption: 24W
Voltage: 220V



ALUM PCB-001 36W DL

Color Family: Daylight 6000k
Description: LED Ceiling lamp module w/ Magnet.
Light Source: LED SMD
Dimension: L 140mm x W 140mm x H 8mm
Power Consumption: 36W
Voltage: 220V



ALUM PCB-001 45W DL

Color Family: Daylight 6000k
Description: LED Ceiling lamp module w/ Magnet.
Light Source: LED SMD
Dimension: L 170mm x W 170mm x H 8mm
Power Consumption: 45W
Voltage: 220V





MINI DOWNLIGHT

ALD02-008 3W

Color Family: Warm White 3000k

Description: Recess type. Aluminum die-cast body in powder-coated paint finish. With DONE power supply.

Light source: LED COB

Dimension: L 45mm x W 45mm x H 27mm (Hole size: Ø 32mm)

Power Consumption: 3W

Voltage: 220-240v

ALD02-010 3W

Color Family: Warm White 3000k

Description: Recess type. Aluminum die-cast body in powder-coated paint finish. With DONE Driver.

Light Source: LED COB

Dimension: L 45mm x W 45mm x H 27mm (Hole size: Ø 32mm)

Power Consumption: 3W

Voltage: 220-240v

ALD02-011 3W SQ

Color Family: Daylight 6000k / Warm White 3000k

Description: Recess type. Aluminum die-cast body in powder-coated paint finish. With DONE power supply.

Light Source: LED COB

Dimension: L 45mm x W 45mm x H 30mm

(Hole size: Ø 32mm)

Power Consumption: 3W

Voltage: 220-240v

ALD02-013 3W

Color Family: Daylight 6000k / Warm White 3000k

Description: Recess type. Aluminum die-cast body in chrome finish. With DONE power supply.

Light Source: LED COB

Item Size: Ø 37mm x H28mm (Hole size: Ø 28mm)

Power Consumption: 3W

Voltage: 220-240v

ALD02-009 3W

Color Family: Warm White 3000k

Description: Recess type. Aluminum die-cast body in powder-coated paint finish. With DONE power supply.

Light Source: LED COB

Dimension: L 45mm x W 45mm x H 27mm (Hole size: Ø32mm)

Power Consumption: 3W

Voltage: 220-240v

ALD02-011 3W RD

Color Family: Daylight 6000k / Warm White 3000k

Description: Recess type. Aluminum die-cast body in powder-coated paint finish. With DONE power supply.

Light Source: LED COB

Dimension: Ø 47mm x H 22mm (Hole size: Ø 32mm)

Power Consumption: 3W

Voltage: 220-240v

ALD02-012 3W

Color Family: Warm White 3000k

Description: Recess type. Aluminum die-cast body in powder-coated paint finish. With DONE power supply.

Light Source: LED COB

Dimension: Ø 35mm x H 50mm (Hole size: Ø 27mm)

Power Consumption: 3W

Voltage: 220-240v

ALD02-014 3W RD

Color Family: Daylight 6000k / Warm White 3000k

Description: Recess type. Directional. Aluminum die-cast body in powder-coated paint finish. With DONE power supply.

Light Source: LED COB

Dimension: Ø 55mm x H40mm (Hole size: Ø 45mm)

Power Consumption: 3W

Voltage: 220-240v

ALD02-014 3W SQ

Color Family: Daylight 6000k / Warm White 3000k

Description: Recess type. Directional. Aluminum die-cast body in powder-coated paint finish.

With DONE power supply.

Light Source: LED COB

Dimension: L55mm x W55mm x H40mm (Hole size: Ø 45mm)

Power Consumption: 3W

Voltage: 220-240v





ALD02-015 3W

Color Family: Warm White 3000k
 Description: Recess type. Aluminum die-cast body in powder-coated paint finish. With DONE power supply.
 Light Source: LED COB
 Dimension: Ø 52mm x H36mm
 (Hole size: Ø 33mm)
 Power Consumption: 3W
 Voltage: 220-240v



ALD02-016 3W

Color Family: Warm White 3000k
 Description: Recess type. Aluminum die-cast body in powder-coated paint finish. With DONE power supply.
 Dimension: Ø 52mm x H36mm
 (Hole size: Ø 34mm)
 Power Consumption: 3W
 Voltage: 220-240v



ALD02-017 3W

Color Family: Warm White 3000k
 Description: Recess type. Aluminum die-cast body in chrome paint finish. With DONE power supply.
 Dimension: Ø 48mm x H17mm
 (Hole size: Ø 32mm)
 Power Consumption: 3W
 Voltage: 220-240v



ALD02-018 1W

Color Family: Warm White 3000k
 Description: Multi-directional. Aluminum die-cast body in chrome paint finish. With DONE power supply.
 Light Source: LED COB
 Dimension: Ø 20mm x H 40mm
 Power Consumption: 1W
 Voltage: 220-240v



ALD02-019 1W

Color Family: Warm White 3000k
 Description: Recess type. Multi-directional. Aluminum die-cast body in chrome paint finish. With DONE power supply.
 Dimension: Ø 35mm x H18mm (Hole size: Ø 34mm)
 Power Consumption: 1W
 Voltage: 220-240v





LED TRACKLIGHT



ALD03-001 1W

Color Family:

Daylight 4000k / Warm White 3000k

Description: Multi-directional. With Driver.

Dimension: Ø 35mm x H 67mm

Power Consumption: 1W

Voltage: 220-240v



ALD03-004 FLOOD 10w

Color Family:

Cool White 4000k / Warm White 3000k

Description: Directional. Tracklight Flood.

Body made of Plastic and aluminum.

(Designed to be used with a track rail for proper installation, which is sold separately.)

Light Source: LED SMD

Dimension: L202mm x W33mm x H 46mm

Power consumption: 10w

Voltage: 180-264V



ALD03-004 FLOOD 10w

Color Family:

Cool White 4000k / Warm White 3000k

Description: Directional. Tracklight Flood.

Body made of plastic and aluminum.

(Designed to be used with a track rail for proper installation, which is sold separately.)

Light Source: LED SMD

Dimension: L202mm x W33mm x H 46mm

Power consumption: 10W

Voltage: 180-264V



ALD03-004 FLOOD 20w

Color Family:

Cool White 4000k / Warm White 3000k

Description: Directional. LED Tracklight Flood.

Body made of plastic and aluminum.

(Designed to be used with a track rail for proper installation, which is sold separately.)

Light Source: LED SMD

Dimension: L303mm x W33mm x H 46mm

Power consumption: 20w

Voltage: 180-264V



ALD03-004 FLOOD 20w

Color Family:

Cool White 4000k / Warm White 3000k

Description: Directional. LED Tracklight Flood.

Body made of plastic and aluminum.

(Designed to be used with a track rail for proper installation, which is sold separately.)

Light Source: LED SMD

Dimension: L303mm x W33mm x H 46mm

Power consumption: 20w

Voltage: 180-264V



ALD03-004 SPOT 10w

Color Family:

Cool White 4000k / Warm White 3000k

Description: Directional. LED Tracklight Spot.

Body made of plastic and aluminum.

(Designed to be used with a track rail for proper installation, which is sold separately.)

Light Source: LED SMD

Dimension: L202mm x W33mm x H 46mm

Power consumption: 10w

Voltage: 180-264V



ALD03-004 SPOT 10w

Color Family:

Cool White 4000k / Warm White 3000k

Description: Directional. LED Tracklight Spot.

Body made of plastic and aluminum.

(Designed to be used with a track rail for proper installation, which is sold separately.)

Light Source: LED SMD

Dimension: L202mm x W33mm x H 46mm

Power consumption: 10W

Voltage: 180-264V



ALD03-004 SPOT 20w

Color Family:

Cool White 4000k / Warm White 3000k

Description: Directional. LED Tracklight Spot.

Body made of plastic and aluminum.

(Designed to be used with a track rail for proper installation, which is sold separately.)

Light Source: LED SMD

Dimension: L303mm x W33mm x H 46mm

Power consumption: 20W

Voltage: 180-264V



ALD03-004 SPOT 20w

Color Family:

Cool White 4000k / Warm White 3000k

Description: Directional. LED Tracklight Spot.

Body made of plastic and aluminum.

(Designed to be used with a track rail for proper installation, which is sold separately.)

Light Source: LED SMD

Dimension: L303mm x W33mm x H 46mm

Wattage: 20W

Voltage: 180-264V

FLOOD

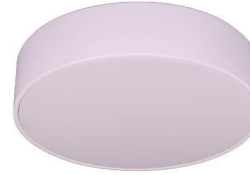
SPOT

SURFACE LIGHT



ALD06-005 16w RD

Color Family:
Daylight 6000k / Cool White 4000k / Warm White 3000k
Description: Surface Type. Aluminum powder-coated paint finish housing with frosted acrylic diffuser.
With DONE power supply.
Light Source: LED
Dimension: Ø 120mm x H 39mm
Power Consumption: 16w
Voltage: 220-240v



ALD06-005 24w RD

Color Family:
Daylight 6000k / Cool White 4000k / Warm White 3000k
Description: Surface Type. Aluminum powder-coated paint finish housing with frosted acrylic diffuser.
With DONE power supply.
Light Source: LED
Dimension: Ø173mm x H40mm
Power Consumption: 24W
Voltage: 220-240v



ALD06-005 16w SQ

Color Family:
Daylight 6000k / Cool White 4000k / Warm White 3000k
Description: Surface Type. Aluminum powder-coated paint finish housing with frosted acrylic diffuser.
With DONE power supply.
Light Source: LED
Dimension: L120mm x W 120mm x H39mm
Power Consumption: 16W
Voltage: 220-240v



ALD06-005 24w SQ

Color Family:
Daylight 6000k / Cool White 4000k / Warm White 3000k
Description: Surface Type. Aluminum powder-coated paint finish housing with frosted acrylic diffuser.
With DONE power supply.
Light Source: LED
Dimension: L173mm x W 173mm x H40mm
Power Consumption: 24W
Voltage: 220-240v

DOWNLIGHT



ALD07-009 6w RD

Color Family:
Daylight 6000k / Warm White 3000k
Description: Recess Downlight. Die-cast aluminum body with frosted acrylic diffuser and Done power supply
Dimension: Ø120mm x H 9mm
Power Consumption: 6W
Voltage: 220-240v



ALD07-009 12w RD

Color Family:
Daylight 6000k / Cool White 4000k / Warm White 3000k
Description: Recess Downlight. Die-cast aluminum body with frosted acrylic diffuser and Done power supply
Dimension: Ø170mm x H 14mm
Power Consumption: 12W
Voltage: 220-240v



ALD07-009 6w SQ

Color Family:
Daylight 6000k / Warm White 3000k
Description: Recess Downlight. Die-cast aluminum body with frosted acrylic diffuser and Done power supply
Dimension: L 120mm x W 120mm x H 9mm
Power Consumption: 6W
Voltage: 220-240v



ALD07-009 12w SQ

Color Family:
Daylight 6000k / Cool White 4000k / Warm White 3000k
Description: Recess Downlight. Die-cast aluminum body with frosted acrylic diffuser and Done power supply
Dimension: L170mm x W 170mm x H9mm
Power Consumption: 12W
Voltage: 220-240v

DOWNLIGHT



ALD07-009 15w RD

Color Family:

Daylight 6000k / Warm White 3000k

Description: Recess Downlight. Die-cast aluminum body with frosted acrylic diffuser and Done power supply
Dimension: Ø 190mm x H 9mm
Power Consumption: 15W
Voltage: 220-240v



ALD07-009 18w RD

Color Family:

Daylight 6000k / Warm White 3000k

Description: Recess Downlight. Die-cast aluminum body with frosted acrylic diffuser and Done power supply
Dimension: Ø 220mm x H 9mm
Power Consumption: 18W
Voltage: 220-240v



ALD07-009 15w SQ

Color Family:

Daylight 6000k / Warm White 3000k

Description: Recess Downlight. Die-cast aluminum body with frosted acrylic diffuser and Done power supply
Dimension: L190mm x W 190mm x H9mm
Power Consumption: 15W
Voltage: 220-240v



ALD07-009 18w SQ

Color Family:

Daylight 6000k / Warm White 3000k

Description: Recess Downlight. Die-cast aluminum body with frosted acrylic diffuser and Done power supply
Dimension: L224mm x W224mm x H9mm
Power Consumption: 18W
Voltage: 220-240v

DOWNLIGHT

CREE W-DONE DRIVER



ALD07-017 5w

Color Family: Warm White 3000k

Description: Recess Downlight. Directional. Aluminum die-cast body in powder-coated paint finish, with DONE Driver.
Light Source: LED COB (Cree)
Dimension: Ø 60mm x H 46mm
(Hole size: Ø 54mm)
Power Consumption: 5W
Voltage: 220-240v



ALD07-017 9w

Color Family: Warm White 3000k

Description: Recess Downlight. Directional. Aluminum die-cast body in powder-coated paint finish, with DONE power supply.
Light Source: LED COB (Cree)
Dimension: Ø 67mm x H 55mm
(Hole size: Ø 70mm)
Power Consumption: 9W
Voltage: 220-240v



ALD07-017 12w

Color Family: Warm White 3000k

Description: Recess Downlight. Directional. Aluminum die-cast body in powder-coated paint finish, with DONE power supply.
Light Source: LED COB (Cree)
Dimension: Ø 108mm x H 55mm
(Hole size: Ø 90mm)
Power Consumption: 12W
Voltage: 220-240v

W-DONE DRIVER



ALD07-017 3w

Color Family: Warm White 3000k

Description: Recess Downlight. Directional. Aluminum die-cast in powder-coated paint finish. With DONE power supply.
Light Source: LED COB
Dimension: Ø 85mm x H 60 mm
(Hole size: Ø 54mm)
Power Consumption: 3W
Voltage: 220-240v



ALD07-017 7w

Color Family: Warm White 3000k

Description: Recess Downlight. Directional. Aluminum die-cast body in powder-coated paint finish, with DONE power supply.
Light Source: LED COB
Dimension: Ø 108mm x H 57mm
(Ø 90mm)
Power Consumption: 7W
Voltage: 220-240v



W-DONE DRIVER



ALD07-017 12w

Color Family: Warm White 3000k

Description: Recess Downlight. Directional. Aluminum die-cast body in powder-coated paint finish, with DONE power supply.
Light Source: LED COB (Cree)
Dimension: Ø 138mm x H 60mm
(Hole size: Ø 103mm)
Power Consumption: 12W
Voltage: 220-240v



ALD07-017 18w

Color Family: Warm White 3000k

Description: Recess Downlight. Directional. Aluminum die-cast body in powder-coated paint finish, with DONE power supply.
Dimension: Ø 150mm x H83mm
(Hole size: Ø 135mm)
Power Consumption: 18W
Voltage: 220-240v

DOWNLIGHT



ALD07-022 10w

Color Family: Warm White 3000k

Description: Recess Downlight. Multi-directional. Aluminum die-cast body in powder-coated paint finish, with DONE power supply.
Light Source: LED
Dimension: Ø 90mm x H 63mm
(Hole size: Ø 85mm)
Power Consumption: 10W
Voltage: 220-240v



ALD07-022 20w

Color Family: Warm White 3000k

Description: Recess Downlight. Multi-directional. Aluminum die-cast body in powder-coated paint finish with DONE power supply.
Light Source: LED
Dimension: Ø 100mm x H100mm
(Hole size: Ø 90mm)
Power Consumption: 20W
Voltage: 220-240v



ALD07-023 12w

Color Family: Warm White 3000k

Description: Recess Downlight. Adjustable. Aluminum die-cast body in powder-coated paint finish, with DONE power supply.
Light Source: LED
Dimension: Ø99mm x 100mm
(Hole size: Ø90mm)
Power Consumption: 12W
Voltage: 220-240v

STEP LIGHT



ALD17-008 2W S

Color Family: Warm White 3000k

Description: Die-cast aluminum and PC material.
Light Source: LED COB
Dimension: L58mm x W 58mm x H 48mm
(Hole Size: LxW 48mm)
Power Consumption: 2W
Voltage: 85-260V



ALD17-008 3W L

Color Family: Warm White 3000k

Description: Die-cast aluminum and PC material.
Light Source: LED COB
Dimension: L84mm x W84mm x H48mm
(Hole size: LxW 67mm)
Power Consumption: 3W
Voltage: 85-260V



ALD17-009 3W

Color Family: Warm White 3000k

Description: Die-cast aluminum and PC material.
Light Source: LED SMD
Dimension: L 200mm x W 60mm x H 50mm
(Hole size: W 53mm x L 195mm)
Power Consumption: 3w
Voltage: 220V



ALD17-009 5W

Color Family: Warm White 3000k

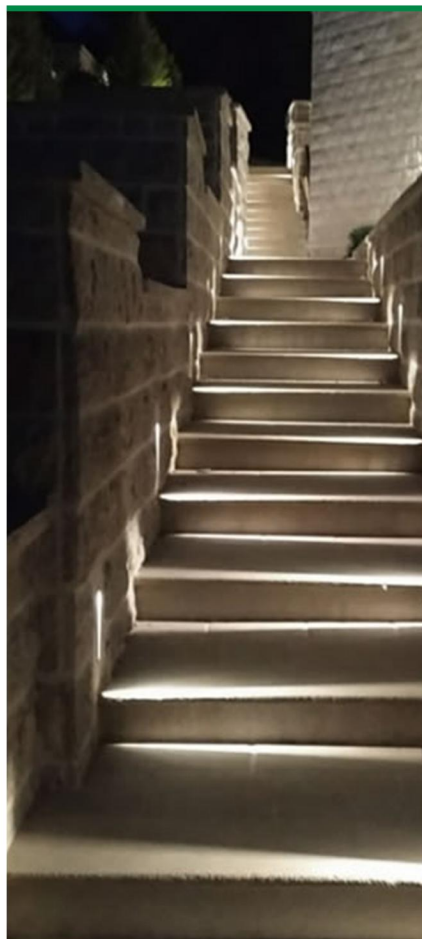
Description: Die-cast aluminum and PC material.
Light Source: LED SMD
L199mm x W 50mm x H 55mm
(Hole size: W 53mm x L 195mm)
Power Consumption: 5w
Voltage: 220V



ALD17-010 A 3w

Color Family: Warm White 3000k

Description: Die-cast aluminum and PC material.
Light Source: LED
Dimension: L 87mm x W 87mm x H 55mm
Power consumption: 3w
Voltage: 220-240v



SIGNAGES



ALD18-001 DF

Description: Aluminum and glass material with running man EXIT sign. Double Face.
Light Source: LED
Dimension: L360mm x W 150mm x H 25mm
Charge Time: 40 hours
Emergency Time: 2 hours
Voltage: 220-240v



ALD18-001 SF

Description: Aluminum and glass material, with EXIT sign. Single face.
Light Source: LED
Dimension: L360mm x W 150mm x H 25mm
Charge time: 40 hours
Emergency time: 2 Hours
Voltage: 220-240v



ALD18-003

Description: Aluminum and acrylic material with Exit sign engraved. Single Face.
Light Source: LED
Power Consumption: 2.4w
Battery: Ni-Cd3.6v 800mAh
Dimension: L 380mm x W 4mm x H 143mm
Battery duration: 2 Hours
Rechargeable period: 20 hours
Voltage: 220-240v

SPOTLIGHT



ALD20-004 10w

Color Family: Warm White 3200k
Description: Die-cast aluminum body in powder-coated paint finish.
Light Source: LED COB
Dimension: Ø 80mm x H190mm
Power Consumption: 10w
Voltage: 220-240v



ALD20-004 10w

Color Family: Warm White 3200k
Description: Die-cast aluminum body in powder-coated paint finish.
Light Source: LED COB
Dimension: Ø 80mm x H190mm
Power Consumption: 10w
Voltage: 220-240v



ALD20-004 20w

Color Family: Warm White 3200k
Description: Die-cast aluminum body in powder-coated paint finish.
Dimension: Ø 80mm x H188mm
Power Consumption: 20w
Voltage: 220-240v



ALD20-004 20w

Color Family: Warm White 3200k
Description: Die-cast aluminum body in powder-coated paint finish.
Dimension: Ø 80mm x H188mm
Power Consumption: 20w
Voltage: 220-240v



ALD20-004 30w

Color Family: Warm White 3200k
Description: Die-cast aluminum in powder-coated paint finish.
Dimension: Ø90mm x H208mm
Power Consumption: 30w
Voltage: 220-240v



ALD20-004 30w

Color Family: Warm White 3200k
Description: Die-cast aluminum in powder-coated paint finish.
Dimension: Ø90mm x H208mm
Power Consumption: 30w
Voltage: 220-240v



ALD21-003 24w

Color Family:
Daylight 6000k / Warm White 3000k
 Description: Diecast aluminum and glass material. IP65.
 Light Source: LED SMD
 Dimension: L 385mm x W 140mm
 Power Consumption: 24W
 lumens: 2880lm
 Voltage: 220-240v



ALD21-003 50w

Color Family:
Daylight 6000k / Warm White 3000k
 Description: Die-cast aluminum and glass material. IP65.
 Light Source: LED SMD
 Dimension: L 525mm x W 220mm
 Power Consumption: 50W
 Lumens: 6000lm
 Voltage: 220-240v



ALD21-003 80w

Color Family:
Daylight 6000k / Warm White 3000k
 Description: Die-cast aluminum and glass material. IP65.
 Light Source: LED SMD
 Dimension: L 550mm x W 250mm
 Power Consumption: 80W
 Lumens: 9600lm
 Voltage: 220-240v



ALD21-003 100w

Color Family:
Daylight 6000k / Warm White 3000k
 Description: Die-cast aluminum and glass material. IP65.
 Light Source: LED SMD
 Dimension: L 643mm x W 285mm
 Power Consumption: 100W
 Lumens: 12000lm
 Voltage: 220-240v



ALD21-003 150w

Color Family:
Daylight 6000k / Warm White 3000k
 Description: Die-cast aluminum and glass material. IP65.
 Light Source: LED SMD
 Dimension: L700mm x W 285mm
 Power Consumption: 150W
 Lumens: 18000lm
 Voltage: 220-240v

EMERGENCY LIGHT



ALD23-003

Color Family: Daylight 6000k

Description: LED Swivel head Automatic Emergency Light

Dimension: L 310mm x W 80mm x H140mm

Light Source: LED SMD 5730 x 8

Power Consumption: 2x3 watt

Battery Type: Ni-CD 3.6v battery AA800mAh

Emergency Duration: 4 Hours

Rechargeable Period: 24 Hours

Voltage: AC 110-220ACV

BACK UP BATTERY



ALD36-001

Description: Emergency Power Supply and backup Battery

Light Source: LED 220v 3-50 Watt

Charging Time: 30 hours

Back-up operation: 2 hours

Battery: Li-on 4500mah 11.1V

Voltage: AC 220-240v