

Fluorescent Fixtures   Halogen Downlight (HD)   Halogen Tracklight (HTR)   Surface Light   Downlight (DL)   Wall Lamp   Post Lamp   High Bay   Low Bay luminaire  
 Garden Light   Step Light   Signages   Prismatic Dome Reflector   Spot Light   Road Light   Emergency Light   Vapor Lamp   Inground Light





brilliant

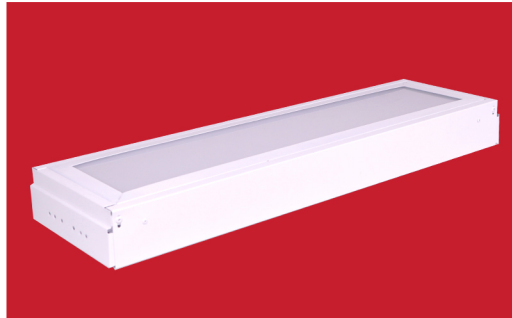
## Fluorescent Fixtures

Fluorescent lighting is highly versatile type of lighting that you most likely encounter at the office, school, or grocery store. Fluorescent light housing or fixture housing is an enclosure container specifically designed to hold and protect necessary electrical connections, Fluorescent lamps, ballast, reflectors and other components required for the proper functioning of fluorescent lighting systems.



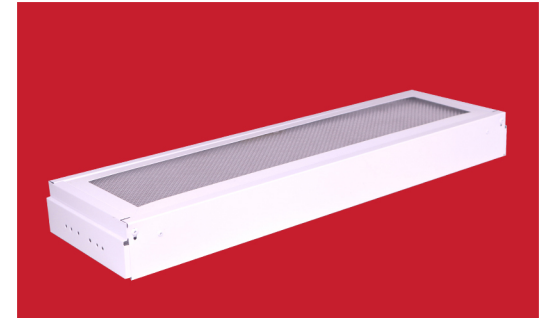
## Box Type

### FF-101 ACRYLIC BT 1x18W 07"x24"



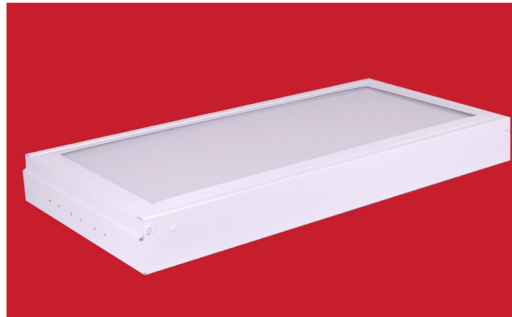
Dimensions: W 7" x L 24" x H 2.5"  
 Mounting: Box Type / Surface Mounted  
 Description: Housing only w/ lamp Holder  
 Material: Phosphated steel body in powder-coated paint.  
 Diffuser: Acrylic Opal  
 Light Compatibility: (T8 - 1x 8w / 9w / 10w LED Tube)  
 (T8 - 1x18w Fluorescent Tube )  
 Lamp Holder: K-421-A T8  
 IP Rating: Indoor  
 Packaging: 2pcs/Bx.

### FF-101 PRISMATIC BT 1x18W 07"x 24"



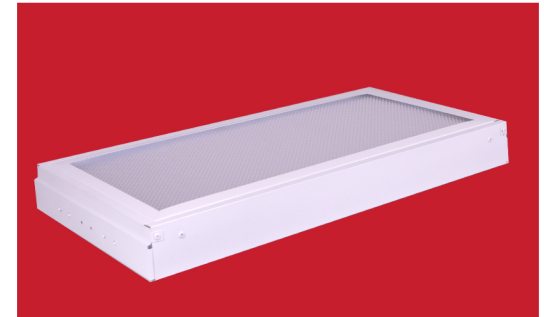
Dimensions: W 7" x L 24" x H 2.5"  
 Mounting: Box Type / Surface Mounted  
 Description: Housing only w/ lamp Holder  
 Material: Phosphated steel body in powder-coated paint.  
 Diffuser: Prismatic  
 Light Compatibility: (T8 - 1x 8w / 9w / 10w LED Tube)  
 (T8 - 1x18w Fluorescent Tube )  
 Lamp Holder: K-421-A T8  
 IP Rating: Indoor  
 Packaging: 2pcs/Bx.

### FF-101 ACRYLIC BT 1x18W 12"x24"



Dimensions: W 12" x L 24" x H 2.5"  
 Mounting: Box Type / Surface type  
 Description: Housing Only w/ Lamp Holder.  
 Material: Phosphated steel body in powder-coated paint.  
 Diffuser: Acrylic Opal  
 Light Compatibility: (T8 - 1x 8w / 9w / 10w LED Tube)  
 (T8 - 1x18w Fluorescent Tube )  
 Lamp Holder: K-421-A T8  
 IP Rating: Indoor  
 Packaging: 2pcs/Bx.

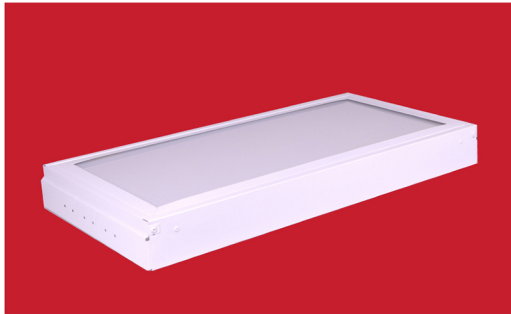
### FF-101 PRISMATIC BT 1x18W 12"x24"



Dimensions: W 12" x L 24" x H 2.5"  
 Mounting: Box Type / Surface Mounted  
 Description: Housing only w/ lamp holder  
 Material: Phosphated steel body in powder-coated paint.  
 Diffuser: Prismatic  
 Light Compatibility: (T8 - 1x 8w / 9w / 10w LED Tube)  
 (T8 - 1x18w Fluorescent Tube )  
 Lamp Holder: K-421-A T8  
 IP Rating: Indoor  
 Packaging: 2pcs/Bx.

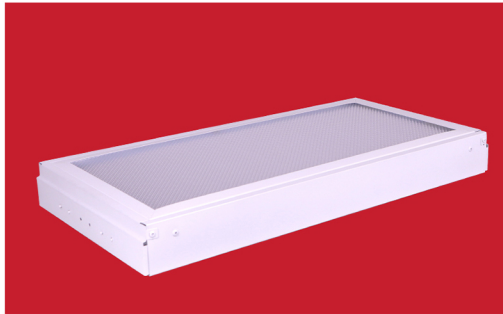


### FF-102 ACRYLIC BT 2x18W 12"x24"



Dimensions: W 12" x L 24" x H 2.5"  
Mounting: Box Type / Surface type  
Description: Housing only w/ lamp holder  
Material: Phosphated steel body in powder-coated paint.  
Diffuser: Acrylic Opal  
Light Compatibility: (T8 - 2x 8w /9w / 10w LED Tube)  
(T8 - 2x18w Fluorescent Tube )  
Lamp Holder: K-421-A T8  
IP Rating: Indoor  
Packaging: 2pcs/Bx.

### FF-102 PRISMATIC BT 2x18W 12"x24"



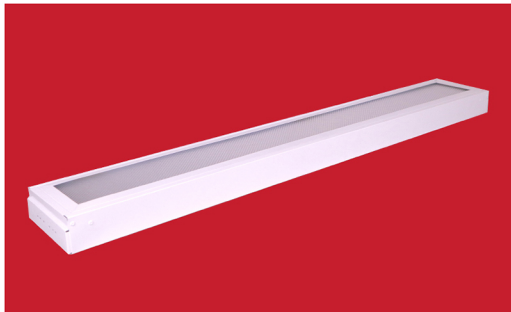
Dimensions: W 12" x L 24" x H 2.5"  
Mounting: Box Type / Surface type  
Description: Housing only w/ lamp holder  
Material: Phosphated steel body in powder-coated paint.  
Diffuser: Prismatic  
Light Compatibility: (T8 - 2x8w/9w/10w LED Tube)  
(T8 - 2x18w Fluorescent Tube )  
Lamp Holder: K-421-A T8  
IP Rating: Indoor  
Packaging: 2pcs/Bx.

### FF-103 ACRYLIC BT 1x36W 07"x48"



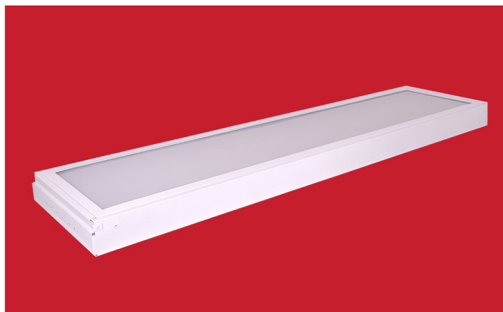
Dimensions: W 7" x L 48" x H 2.5"  
Mounting: Box Type / Surface type  
Description: Housing only w/ lamp holder  
Material: Phosphated steel body in powder-coated paint.  
Diffuser: Acrylic Opal  
Light Compatibility: (T8 - 1x 16w / 18w / 20W LED Tube)  
(T8 - 1x36w Fluorescent Tube )  
Lamp Holder: K-421-A T8  
IP Rating: Indoor  
Packaging: 2pcs/Bx.

### FF-103 PRISMATIC BT 1x36W 07"x48"



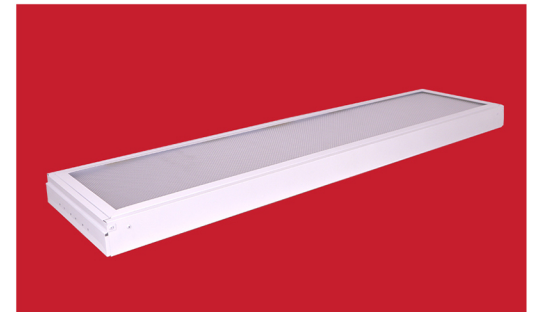
Dimensions: W 7" x L 48" x H 2.5"  
Mounting: Box Type / Surface type  
Description: Housing only w/ lamp holder  
Material: Phosphated steel body in powder-coated paint.  
Diffuser: Prismatic  
Light Compatibility: (T8 - 1x 16w / 18w / 20W LED Tube)  
(T8 - 1x36w Fluorescent Tube )  
Lamp Holder: K-421-A T8  
IP Rating: Indoor  
Packaging: 2pcs/Bx.

### FF-103 ACRYLIC BT 1x36W 12"x48"



Dimensions: W 12" x L 48" x H 2.5"  
Mounting: Box Type / Surface type  
Description: Housing only w/ lamp holder  
Material: Phosphated steel body in powder-coated paint.  
Diffuser: Acrylic Opal  
Light Compatibility: (T8 - 1x 16w / 18w / 20W LED Tube)  
(T8 - 1x36w Fluorescent Tube )  
Lamp Holder: K-421-A T8  
IP Rating: Indoor  
Packaging: 2pcs/Bx.

### FF-103 PRISMATIC BT 1x36W 12"x48"



Dimensions: W 12" x L 48" x H 2.5"  
Mounting: Box Type / Surface type  
Description: Housing only w/ lamp holder.  
Material: Phosphated steel body in powder-coated paint.  
Diffuser: Prismatic  
Light Compatibility: (T8 - 1x 16w / 18w / 20W LED Tube)  
(T8 - 1x36w Fluorescent Tube )  
Lamp Holder: K-421-A T8  
IP Rating: Indoor  
Packaging: 2pcs/Bx.

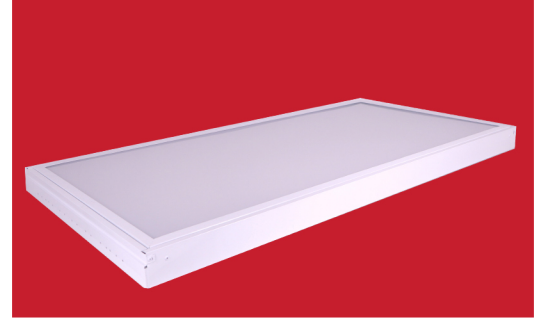


**FF-104 ACRYLIC BT 2x36W 12"x48"**

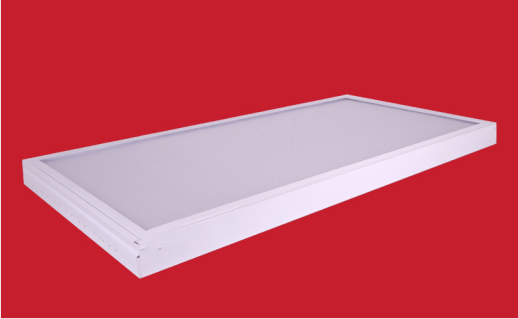
Dimensions: W 12" x L 48" x H 2.5"  
 Mounting: Box Type / Surface type  
 Description: Housing only with lamp holder  
 Material: Phosphated steel body in powder-coated paint.  
 Diffuser: Acrylic Opal  
 Light Compatibility: (T8 - 2x 16w / 18w / 20W LED Tube)  
 (T8 - 2x36w Fluorescent Tube )  
 Lamp Holder: K-421-A T8  
 IP Rating: Indoor  
 Packaging: 2pcs/Bx.

**FF-104 PRISMATIC BT 2x36W 12"x48"**

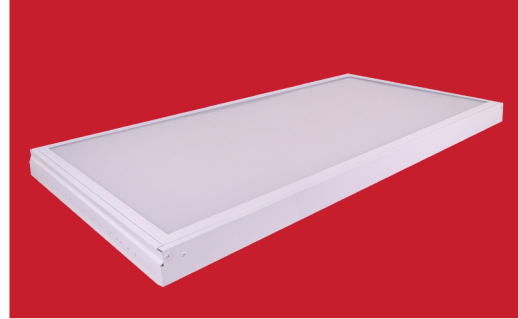
Dimensions: W 12" x L 48" x H 2.5"  
 Mounting: Box Type / Surface type  
 Description: Housing only w/ lamp holder.  
 Material: Phosphated steel body in powder-coated paint.  
 Diffuser: Prismatic  
 Light Compatibility: (T8 - 2x 16w / 18w / 20W LED Tube)  
 (T8 - 2x36w Fluorescent Tube )  
 Lamp Holder: K-421-A T8  
 IP Rating: Indoor  
 Packaging: 2pcs/Bx.

**FF-105 ACRYLIC BT 2x36W 24"x48"**

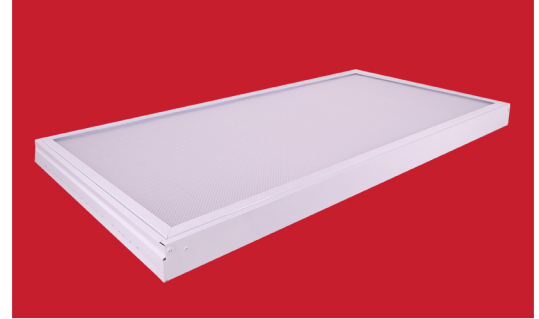
Dimensions: W 24" x L 48" x H 2.5"  
 Mounting: Box Type / Surface type  
 Description: Housing only w/ lamp holder.  
 Material: Phosphated steel body in powder-coated paint.  
 Diffuser: Acrylic Opal  
 Light Compatibility: (T8 - 2x 16w / 18w / 20W LED Tube)  
 (T8 - 2x36w Fluorescent Tube )  
 Lamp Holder: K-421-A T8  
 IP Rating: Indoor  
 Packaging: 2pcs/Bx.

**FF-105 PRISMATIC BT 2x36W 24"x48"**

Dimensions: W 24" x L 48" x H 2.5"  
 Mounting: Box Type / Surface type  
 Description: Housing only w/ lamp holder.  
 Material: Phosphated steel body in powder-coated paint.  
 Diffuser: Prismatic  
 Light Compatibility: (T8 - 2x 16w / 18w / 20W LED Tube)  
 (T8 - 2x36w Fluorescent Tube )  
 Lamp Holder: K-421-A T8  
 IP Rating: Indoor  
 Packaging: 2pcs/Bx.

**FF-106 ACRYLIC BT 3x36 24"x48"**

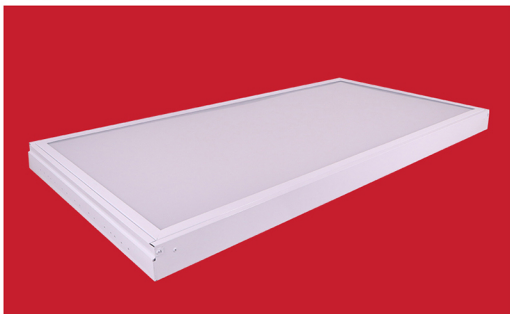
Dimensions: W 24" x L 48" x H 2.5"  
 Mounting: Box Type / Surface Mounted  
 Description: Housing only w/ lamp holder  
 Material: Phosphated steel body in powder-coated paint.  
 Diffuser: Acrylic Opal  
 Light Compatibility: (T8 - 3x 16w / 18w / 20W LED Tube)  
 (T8 - 3x36w Fluorescent Tube )  
 Lamp Holder: K-421-A T8  
 IP Rating: Indoor  
 Packaging: 2pcs/Bx.

**FF-106 PRISMATIC BT 3x36W 24"x48"**

Dimensions: W 24" x L 48" x H 2.5"  
 Mounting: Box Type / Surface Mounted  
 Description: Housing only w/ lamp holder  
 Material: Phosphated steel body in powder-coated paint.  
 Diffuser: Prismatic  
 Light Compatibility: (T8 - 3x 16w / 18w / 20W LED Tube)  
 (T8 - 3x36w Fluorescent Tube )  
 Lamp Holder: K-421-A T8  
 IP Rating: Indoor  
 Packaging: 2pcs/Bx.

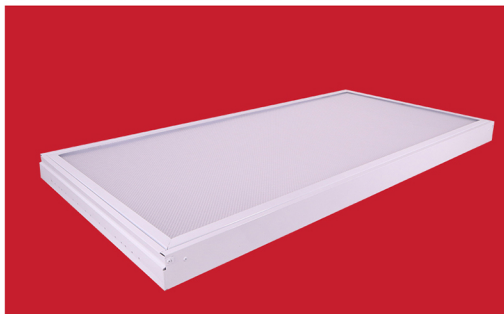


### FF-107 ACRYLIC BT 4x36W 24"x48"



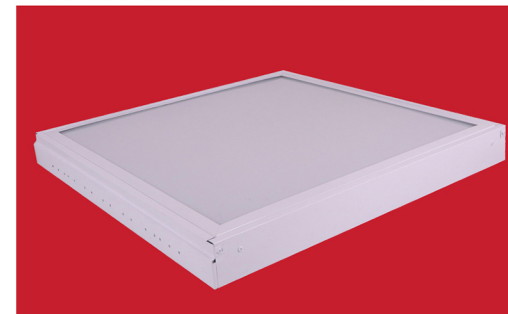
Dimensions: W 24" x L 48" x H 2.5"  
Mounting: Box Type / Surface Mounted  
Description: Housing w/ lamp holder  
Material: Phosphated steel body in powder-coated paint.  
Diffuser: Acrylic Opal  
Light Compatibility: (T8 - 4x 16w / 18w / 20W LED Tube)  
(T8 - 4x36w Fluorescent Tube )  
Lamp Holder: K-421-A T8  
IP Rating: Indoor  
Packaging: 2 pcs/Bx.

### FF-107 PRISMATIC BT 4x36W 24"x48"



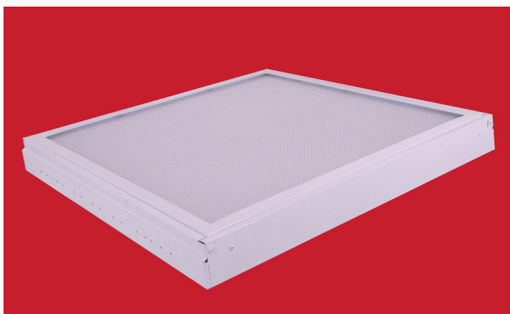
Dimensions: W 24" x L 48" x H 2.5"  
Mounting: Box Type / Surface Mounted  
Description: Housing w/ lamp holder  
Material: Phosphated steel body in powder-coated paint.  
Diffuser: Prismatic  
Light Compatibility: (T8 - 4x 16w / 18w / 20W LED Tube)  
(T8 - 4x36w Fluorescent Tube )  
Lamp Holder: K-421-A T8  
IP Rating: Indoor  
Packaging: 2 pcs/Bx.

### FF-108 ACRYLIC BT 2x18W 24"x24"



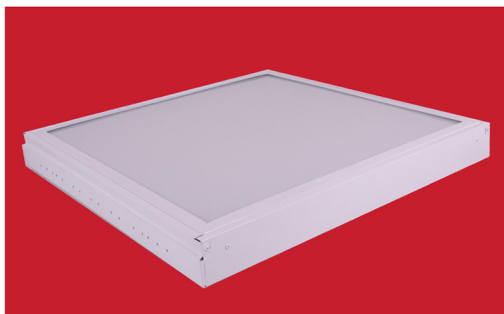
Dimensions: W 24" x L 24" x H 2.5"  
Mounting: Box Type / Surface Mounted  
Description: Housing w/ lamp holder  
Material: Phosphated steel body in powder-coated paint.  
Diffuser: Acrylic Opal  
Light Compatibility: (T8 - 2x 8w / 9w /10w LED Tube)  
(T8 - 2x18w Fluorescent Tube )  
Lamp Holder: K-421-A T8  
IP Rating: Indoor  
Packaging: 2 pcs./Bx.

### FF-108 PRISMATIC BT 2x18W 24"x24"



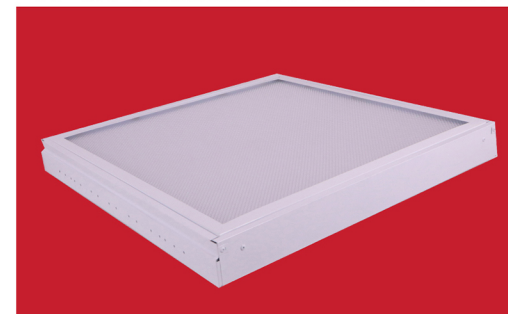
Dimensions: W 24" x L 24" x H 2.5"  
Mounting: Box Type / Surface Type  
Description: Housing w/ lamp holder  
Material: Phosphated steel body in powder-coated paint.  
Diffuser: Prismatic  
Light Compatibility: (T8 - 2x 8w / 9w /10w LED Tube)  
(T8 - 2x18w Fluorescent Tube )  
Lamp Holder: K-421-A T8  
IP Rating: Indoor  
Packaging: 2 pcs./Bx.

### FF-109 ACRYLIC BT 3x18W 24"x24"



Dimensions: W 24" x L 24" x H 2.5"  
Mounting: Box Type / Surface Type  
Description: Housing w/ lamp holder  
Material: Phosphated steel body in powder-coated paint.  
Diffuser: Acrylic Opal  
Light Compatibility: (T8 - 3x 8w / 9w /10w LED Tube)  
(T8 - 3x18w Fluorescent Tube )  
Lamp Holder: K-421-A T8  
IP Rating: Indoor  
Packaging: 2 pcs./Bx.

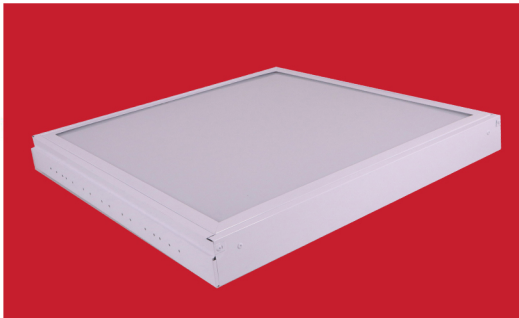
### FF-109 PRISMATIC BT 3x18W 24"x24"



Dimensions: W 24" x L 24" x H 2.5"  
Mounting: Box Type / Surface Type  
Description: Housing w/ lamp holder  
Material: Phosphated steel body in powder-coated paint.  
Diffuser: Prismatic  
Light Compatibility: (T8 - 3x 8w / 9w /10w LED Tube)  
(T8 - 3x18w Fluorescent Tube )  
Lamp Holder: K-421-A T8  
IP Rating: Indoor  
Packaging: 2 pcs./Bx.

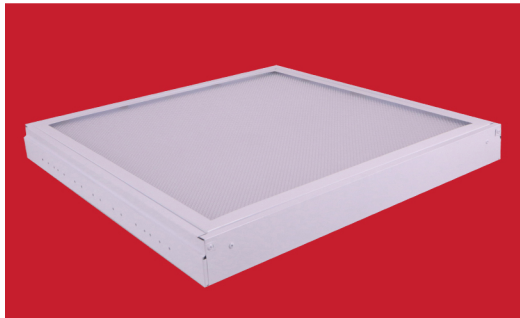


### FF-110 ACRYLIC BT 4x18W 24"x24"



Dimensions: W 24" x L 24" x H 2.5"  
 Mounting: Box Type / Surface Type  
 Description: Housing w/ lamp holder  
 Material: Phosphated steel body in powder-coated paint.  
 Diffuser: Acrylic Opal  
 Light Compatibility: (T8 - 4x 8w / 9w / 10w LED Tube)  
 (T8 - 4x18w Fluorescent Tube )  
 Lamp Holder: K-421-A T8  
 IP Rating: Indoor  
 Packaging: 2 pcs./Bx.

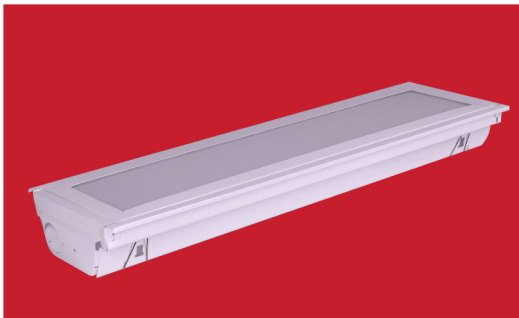
### FF-110 PRISMATIC BT 4x18W 24"x24"



Dimensions: W 24" x L 24" x H 2.5"  
 Mounting: Box Type / Surface Type  
 Description: Housing w/ lamp holder  
 Material: Phosphated steel body in powder-coated paint.  
 Diffuser: Prismatic  
 Light Compatibility: (T8 - 4x 8w / 9w / 10w LED Tube)  
 (T8 - 4x18w Fluorescent Tube )  
 Lamp Holder: K-421-A T8  
 IP Rating: Indoor  
 Packaging: 2 pcs/Bx.

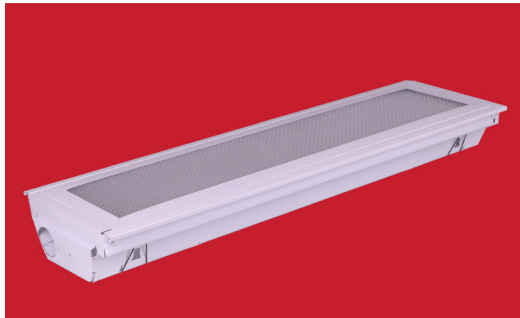
## Flush Type

### FF-101 ACRYLIC FT 1x18W 07"x24"



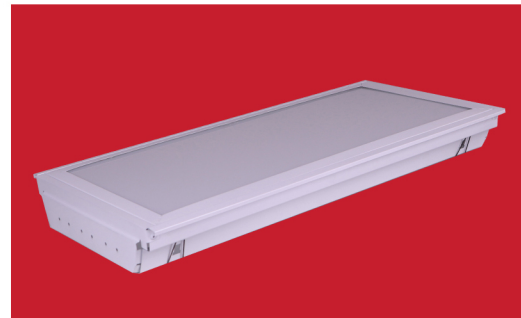
Dimensions: W 7" x L 24" x H 2.5"  
 Mounting: Flush Type / Recess Type  
 Description: Housing only w/ lamp holder.  
 Material: Phosphated steel body in powder-coated paint.  
 Diffuser: Acrylic Opal  
 Light Compatibility: (T8 - 1x 8w / 9w / 10w LED Tube)  
 (T8 - 1x18w Fluorescent Tube )  
 Lamp Holder: K-421-A T8  
 Packaging: 2pcs/ Bx.

### FF-101 PRISMATIC FT 1x18W 07"x24"



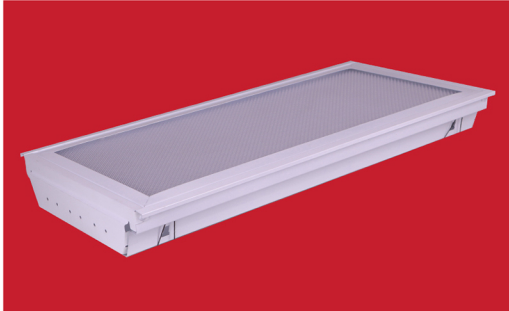
Dimensions: W 7" x L 24" x H 2.5"  
 Mounting: Flush Type / Recess Type  
 Description: Housing Only W/ Lamp Holder.  
 Material: Phosphated steel body in powder-coated paint.  
 Diffuser: Prismatic  
 Light Compatibility: (T8 - 1x 8w / 9w / 10w LED Tube)  
 (T8 - 1x18w Fluorescent Tube )  
 Lamp Holder: K-421-A T8  
 IP Rating: Indoor  
 Packaging: 2pcs/Bx.

### FF-101 ACRYLIC FT 1x18W 12"x24"



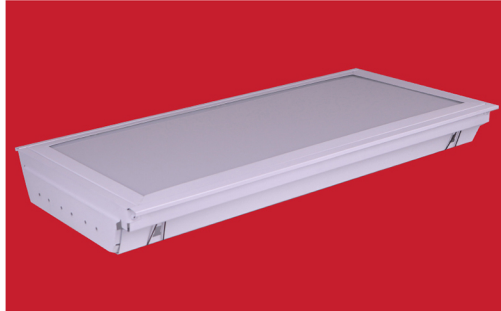
Dimensions: W 12" x L 24" x H 2.5"  
 Mounting: Flush Type / Recess Type  
 Description: Housing only w/ lamp holder.  
 Material: Phosphated steel body in powder-coated paint.  
 Diffuser: Acrylic Opal  
 Light Compatibility: (T8 - 1x 8w / 9w / 10w LED Tube)  
 (T8 - 1x18w Fluorescent Tube )  
 Lamp Holder: K-421-A T8  
 IP Rating: Indoor  
 Packaging: 2pcs/Bx.

### FF-101 PRISMATIC FT 1x18W 12"x24"



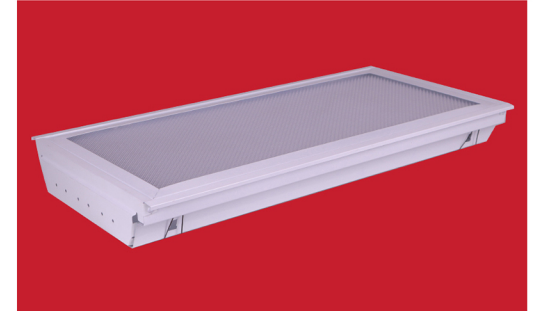
Dimensions: W 12" x L 24" x H 2.5"  
Mounting: Flush Type / Recess Type  
Description: Housing only w/ lamp holder  
Material: Phosphated steel body in powder-coated paint.  
Diffuser: Prismatic  
Light Compatibility: (T8 - 1x 8w / 9w / 10w LED Tube)  
(T8 - 1x18w Fluorescent Tube )  
Lamp Holder: K-421-A T8  
IP Rating: Indoor  
Packaging: 2pcs/Bx.

### FF-102 ACRYLIC FT 2x18W 12"x24"



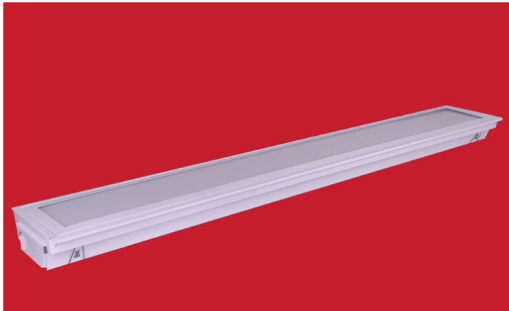
Dimensions: W 12 x L 24" x H 2.5"  
Mounting: Flush Type / Recess Type  
Description: Housing only w/ lamp holder.  
Material: Phosphated steel body in powder-coated paint.  
Diffuse: Acrylic Opal  
Light Compatibility: (T8 - 1x 8w / 9w / 10w LED Tube)  
(T8 - 1x18w Fluorescent Tube )  
Lamp Holder: K-421-A T8  
IP Rating: Indoor  
Packaging: 2pcs/Bx.

### FF-102 PRISMATIC FT 2x18 12"x24"



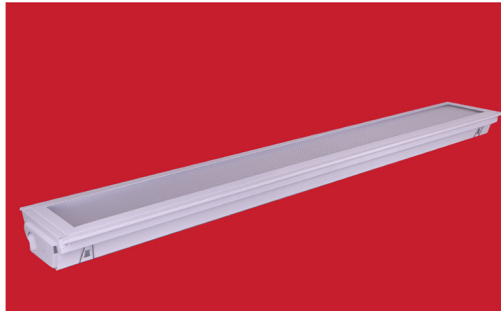
Dimensions: W 12" x L 24" x H 2.5"  
Mounting: Flush Type / Recess Type  
Material: Phosphated steel body in powder-coated paint.  
Diffuser: Prismatic  
Light Compatibility: (T8 - 2x 8w / 9w / 10w LED Tube)  
(T8 - 2x18w Fluorescent Tube )  
Lamp Holder: K-421-A T8  
IP Rating: Indoor  
Packaging: 2pcs/Bx

### FF-103 ACRYLIC FT 1x36W 07"x48"



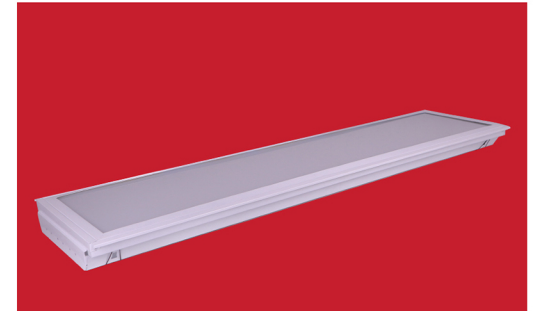
Dimensions: W 7" x L 48" x H 2.5"  
Mounting: Flush Type / Recess Type  
Description: Housing only w/ lamp holder  
Material: Phosphated steel body in powder-coated paint.  
Diffuser: Acrylic Opal  
Light Compatibility: (T8 - 1x 16w / 18w / 20W LED Tube)  
(T8 - 1x36w Fluorescent Tube )  
Lamp Holder: K-421-A T8  
IP Rating: Indoor  
Packaging: 1pc./Bx.

### FF-103 PRISMATIC FT 1x36W 07"x48"



Dimensions: W 7" x L 48" x H 2.5"  
Mounting: Flush Type / Recess Type  
Description: Housing only w/ lamp holder.  
Material: Phosphated steel body in powder-coated paint.  
Diffuser: Prismatic  
Light Compatibility: (T8 - 1x 16w / 18w / 20W LED Tube)  
(T8 - 1x36w Fluorescent Tube )  
Lamp Holder: K-421-A T8  
IP Rating: Indoor  
Packaging: 1pc/Bx.

### FF-103 ACRYLIC FT 1x36W 12"x48"

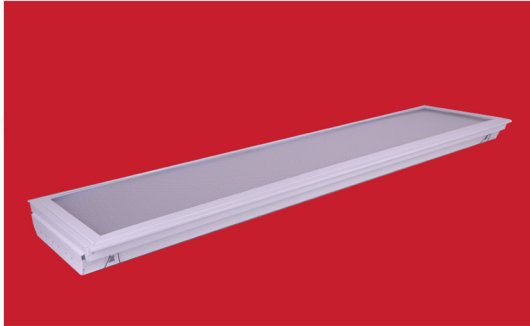


Dimensions: W 12" x L 48" x H 2.5"  
Mounting: Flush Type / Recess Type  
Description: Housing only w/ lamp holder  
Material: Phosphated steel body in powder-coated paint.  
Diffuser: Acrylic Opal  
Light Compatibility: (T8 - 1x 16w / 18w / 20W LED Tube)  
(T8 - 1x36w Fluorescent Tube )  
Lamp Holder: K-421-A T8  
IP Rating: Indoor  
Packaging: 1pc/Bx.



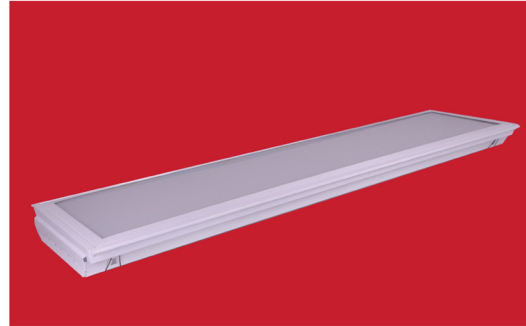


### FF-103 PRISMATIC FT 1x36W 12"x48"



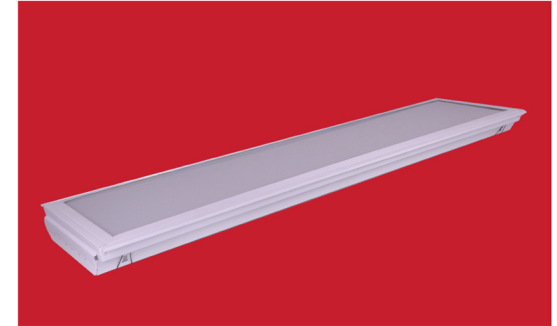
Dimensions: W 12" x L 48" x H 2.5"  
 Mounting: Flush Type / Recess Type  
 Description: Housing only with lamp holder.  
 Material: Phosphated steel body in powder-coated paint.  
 Diffuser: Prismatic  
 Light Compatibility: (T8 - 1x 16w / 18w / 20W LED Tube)  
 (T8 - 1x36w Fluorescent Tube )  
 Lamp Holder: K-421-A T8  
 IP Rating: Indoor  
 Packaging: 1pc/Bx.

### FF-104 ACRYLIC FT 2x36W 12"x48"



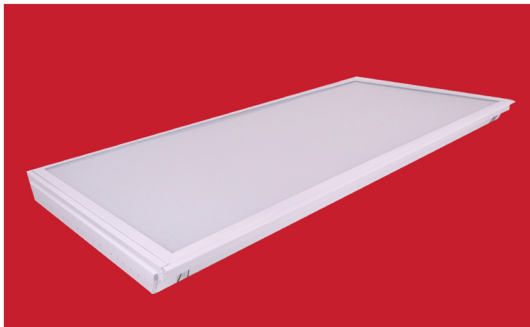
Dimensions: W 12" x L 48" x H 2.5"  
 Mounting: Flush Type / Recess Type  
 Description: Housing only w/ lamp holder.  
 Material: Phosphated steel body in powder-coated paint.  
 Diffuser: Acrylic Opal  
 Light Compatibility: (T8 - 2x 16w / 18w / 20W LED Tube)  
 (T8 - 2x36w Fluorescent Tube )  
 Lamp Holder: K-421-A T8  
 IP Rating: Indoor  
 Packaging: 1pc/Bx.

### FF-104 PRISMATIC FT 2x36W 12"x48"



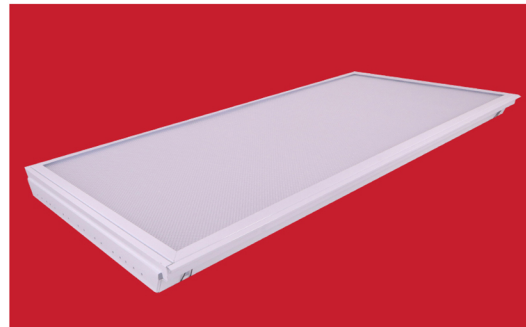
Dimensions: W 12" x L 48" x H 2.5"  
 Mounting: Flush Type /RecessType  
 Material: Phosphated steel body in powder-coated paint.  
 Diffuser: Prismatic  
 Light Compatibility: (T8 - 2x 16w / 18w / 20W LED Tube)  
 (T8 - 2x36w Fluorescent Tube )  
 Lamp Holder: K-421-A T8  
 IP Rating: Indoor  
 Packaging: 2pcs/Bx.

### FF-105 ACRYLIC FT 2x36W 24"x48"



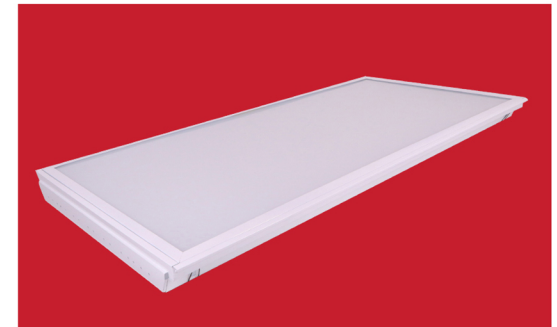
Dimensions: W 24" x L 48" x H 2.5"  
 Mounting: Flush Type / Recess Type  
 Description: Housing only w/ lamp holder  
 Material: Phosphated steel body in powder-coated paint.  
 Diffuser: Acrylic Opal  
 Light Compatibility: (T8 - 2x 16w / 18w / 20W LED Tube)  
 (T8 - 2x36w Fluorescent Tube )  
 Lamp Holder: K-421-A T8  
 IP Rating: Indoor  
 Packaging: 2pcs/Bx.

### FF-105 PRISMATIC FT 2x36W 24"x48"



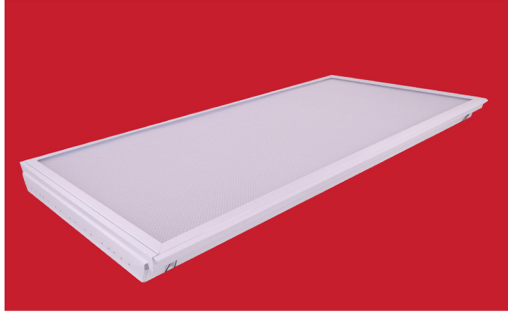
Dimensions: W 24" x L 48" x H 2.5"  
 Mounting: Flush Type / Recess Type  
 Description: Housing only w/ lamp holder.  
 Material: Phosphated steel body in powder-coated paint.  
 Diffuser: Prismatic  
 Light Compatibility: (T8 - 2x 16w / 18w / 20W LED Tube)  
 (T8 - 2x36w Fluorescent Tube )  
 Lamp Holder: K-421-A T8  
 IP Rating: Indoor  
 Packaging: 2pcs/Bx.

### FF-106 ACRYLIC FT 3x36W 24"x48"



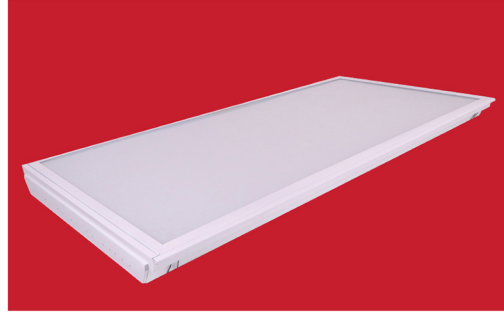
Dimensions: W 24" x L 48" x H 2.5"  
 Mounting: Flush Type /Recess Type  
 Description: Housing only w/ lamp holder  
 Material: Phosphated steel body in powder-coated paint.  
 Diffuser: Acrylic Opal  
 Light Compatibility: (T8 -3x 16w / 18w / 20W LED Tube)  
 (T8 - 3x36w Fluorescent Tube )  
 Lamp Holder: K-421-A T8  
 IP Rating: Indoor  
 Packaging: 2pcs/Bx.

### FF-106 PRISMATIC FT 3x36W 24"x48"



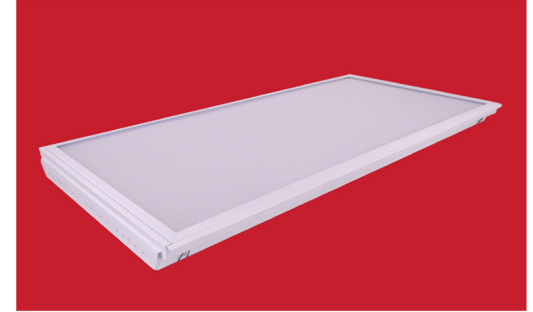
Dimensions: W 24" x L 48" x H 2.5"  
Mounting: Flush Type / Recess Type  
Description: Housing only w/ lamp holder  
Material: Phosphated steel body in powder-coated paint.  
Diffuser: Prismatic  
Light Compatibility: (T8 - 3x 16w / 18w / 20W LED Tube)  
(T8 - 3x36w Fluorescent Tube )  
Lamp Holder: K-421-A T8  
IP Rating: Indoor  
Packaging: 2pcs/Bx.

### FF-107 ACRYLIC FT 4x36W 24"x48"



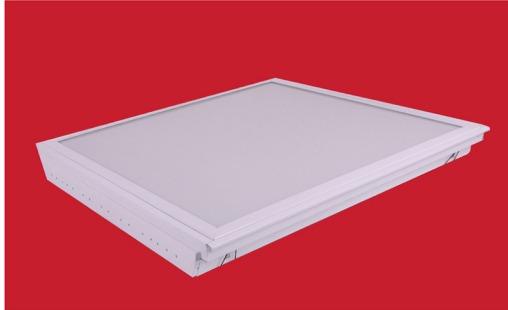
Dimensions: W 24" x L 48" x H 2.5"  
Mounting: Flush type / Recess Type  
Description: Housing only w/ lamp holder  
Material: Phosphated steel body in powder-coated paint.  
Diffuser: Acrylic Opal  
Light Compatibility: (T8 - 4x 16w / 18w / 20W LED Tube)  
(T8 - 4x36w Fluorescent Tube )  
Lamp Holder: K-421-A T8  
IP Rating: Indoor  
Packaging: 2 pcs./Bx.

### FF-107 PRISMATIC FT 4x36W 24"x48"



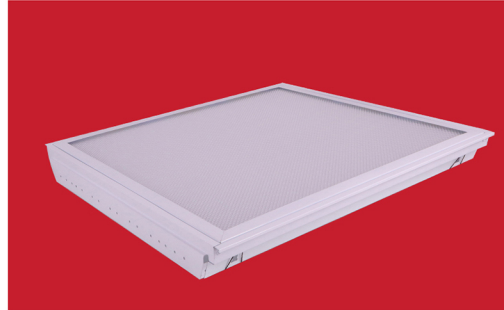
Dimensions: W 24" x L 48" x H 2.5"  
Mounting: Flush Type / Recess Type  
Description: Housing only w/ lamp holder  
Material: Phosphated steel body in powder-coated paint.  
Diffuser: Prismatic  
Light Compatibility: (T8 - 4x 16w / 18w / 20W LED Tube)  
(T8 - 4x36w Fluorescent Tube )  
Lamp Holder: K-421-A T8  
IP Rating: Indoor  
Packaging: 2 pcs/Bx.

### FF-108 ACRYLIC FT 2x18W 24"x24"



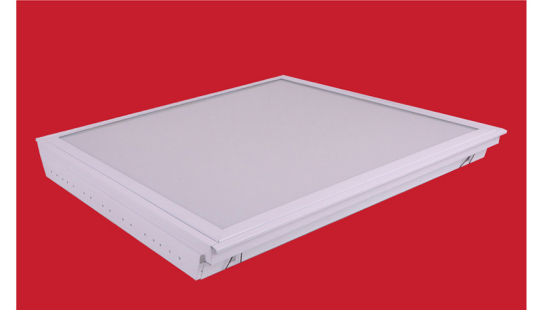
Dimensions: W 24" x L 24" x H 2.5"  
Mounting: Flush Type / Recess Type  
Description: Housing w/ lamp holder  
Material: Phosphated steel body in powder-coated paint.  
Diffuser: Acrylic Opal  
Light Compatibility: (T8 - 2x 8w / 9w / 10w LED Tube)  
(T8 - 2x18w Fluorescent Tube )  
Lamp Holder: K-421-A T8  
IP Rating: Indoor  
Packaging: 2 pcs./Bx.

### FF-108 PRISMATIC FT 2x18W 24"x24"



Dimensions: W 24" x L 24" x H 2.5"  
Mounting: Flush Type / Recess Type  
Description: Housing w/ lamp holder  
Material: Phosphated steel body in powder-coated paint.  
Diffuser: Prismatic  
Light Compatibility: (T8 - 2x 8w / 9w / 10w LED Tube)  
(T8 - 2x18w Fluorescent Tube )  
Lamp Holder: K-421-A T8  
IP Rating: Indoor  
Packaging: 2 pcs./Bx.

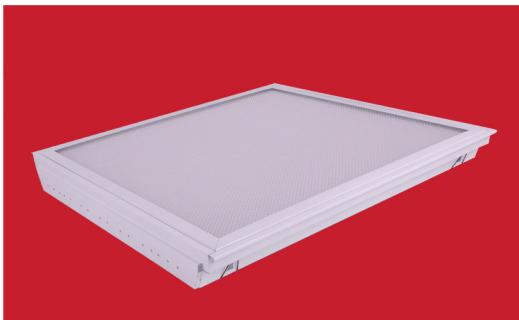
### FF-109 ACRYLIC FT 3x18W 24"x24"



Dimensions: W 24" x L 24" x H 2.5"  
Mounting: Flush Type / Recess Type  
Description: Housing w/ lamp holder  
Material: Phosphated steel body in powder-coated paint.  
Diffuser: Acrylic Opal  
Light Compatibility: (T8 - 3x 8w / 9w / 10w LED Tube)  
(T8 - 3x18w Fluorescent Tube )  
Lamp Holder: K-421-A T8  
IP Rating: Indoor  
Packaging: 2 pcs./Bx.

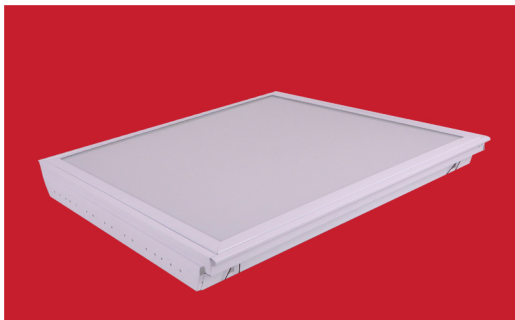


### FF-109 PRISMATIC FT 3x18W 24"x24"



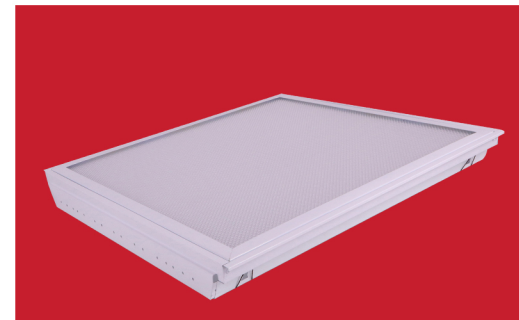
Dimensions: W 24" x L 24" x H 2.5"  
 Mounting: Flush Type / Recess Type  
 Description: Housing w/ lamp holder  
 Material: Phosphated steel body in powder-coated paint.  
 Diffuser: Prismatic  
 Light Compatibility: (T8 - 3x 8w / 9w/ 10w LED Tube)  
 (T8 - 3x18w Fluorescent Tube )  
 Lamp Holder: K-421-A T8  
 IP Rating: Indoor  
 Packaging: 2 pcs./Bx.

### FF-110 ACRYLIC FT 4x18W 24"x24"



Dimensions: W 24" x L 24" x H 2.5"  
 Mounting: Flush Type / Recess Type  
 Description: Housing w/ lamp holder  
 Material: Phosphated steel body in powder-coated paint.  
 Diffuser: Acrylic Opal  
 Light Compatibility: (T8 - 4x 8w / 9w / 10w LED Tube)  
 (T8 - 4x18w Fluorescent Tube )  
 Lamp Holder: K-421-A T8  
 IP Rating: Indoor  
 Packaging: 2 pcs./Bx.

### FF-110 PRISMATIC FT 4x18W 24"x24"



Dimensions: W 24" x L 24" x H 2.5"  
 Mounting: Flush type /Recess  
 Description: Housing w/ lamp holder  
 Material: Phosphated steel body in powder-coated paint.  
 Diffuser: Prismatic  
 Light Compatibility: (T8 - 4x 8w / 9w / 10w LED Tube)  
 (T8 - 4x18w Fluorescent Tube )  
 Lamp Holder: K-421-A T8  
 IP Rating: Indoor  
 Packaging: 2 pcs/Bx.



# Industrial Type

## Powder coated reflector

**FF-111**



Included: Housing only w/ lamp holder.  
Description: Industrial Type. Made in zinc phosphate steel sheet housing in white powder coat paint finish.  
Reflector: White Powder Coated  
Dimension: L 610mm x W 241mm x H 108mm  
Light Compatibility: T8 - 1x8w / 9w / 10w LED Tube  
T8 - 1x18w Fluorescent Tube

**FF-112**



Included: Housing only w/ lamp holder.  
Description: Industrial Type. Made in zinc phosphate steel sheet housing in white powder coat paint finish.  
Reflector: White Powder Coated  
Dimension: L 1220mm x W 241mm x H 108mm  
Light Compatibility: T-8 1x16w / 18w / 20w LED Tube  
T-8 1x36w Fluorescent Tube

**FF-113**



Included: Housing only w/ lamp holder.  
Description: Industrial Type. Zinc phosphate steel sheet housing in white powder coat paint finish.  
Reflector: White Powder Coated  
Dimension: L 610mm x W 267mm x H 108mm  
Light Compatibility: T8 - 2 x8w / 9w / 10w LED Tube  
T8 - 2 x 18w Fluorescent Tube

**FF-114**



Included: Housing only w/ lamp holder.  
Description: Industrial Type. made in zinc phosphate steel sheet housing in white powder coat paint finish.  
Reflector: White Powder Coated  
Dimension: L1220mm x W 267mm x H 108mm  
Light Compatibility: T8 - 2x16w /18w/ 20w LED Tube  
T8 - 2X36w Fluorescent Tube

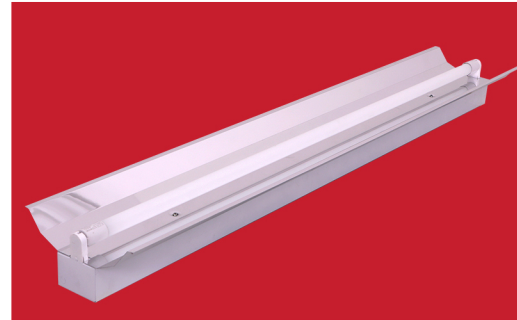


# Industrial Type

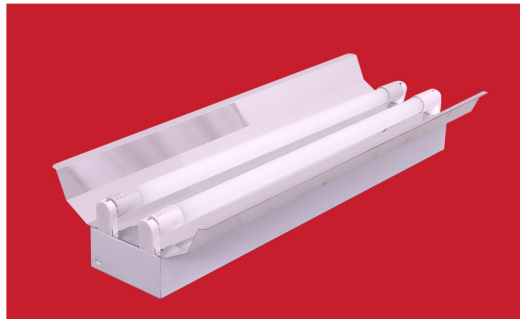
## Mirrorized Reflector

**FF-115**

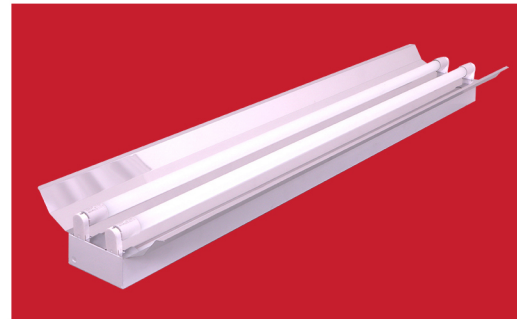
Included: Housing only w/ lamp holder.  
 Description: Industrial Type. Made in zinc phosphate steel sheet housing in white powder coat paint finish.  
 Reflector: Mirrorized Aluminum Reflector  
 Dimension: L 610mm x W 241mm x H 108mm  
 Light Compatibility: T8 - 1x8w / 9w / 10w LED Tube  
 T8 - 1 x18w Fluorescent Tube

**FF-116**

Included: Housing only w/ lamp holder.  
 Description: Industrial Type. made in zinc phosphate steel sheet housing in white powder coat paint finish.  
 Reflector: Mirrorized Aluminum Reflector  
 Dimension: L 1220mm x W 241mm x H 108mm  
 Light Compatibility: T8 - 1x 16w / 18w / 20w LED Tube  
 T8 - 1x36w Fluorescent Tube

**FF-117**

Included: Housing only w/ lamp holder.  
 Description: Industrial Type. made in zinc phosphate steel sheet housing in white powder coat paint finish.  
 Reflector: Mirrorized Aluminum Reflector  
 Dimension: L 610mm x W 267mm x H 108mm  
 Light Compatibility: T8 - 2x8w / 9w / 10w LED Tube  
 T8 - 2x18w Fluorescent Tube

**FF-118**

Included: Housing only w/ lamp holder.  
 Description: Industrial Type. made in zinc phosphate steel sheet housing in white powder coat paint finish.  
 Reflector: Mirrorized Aluminum Reflector  
 Dimension: L 1220mm x W 267mm x H 108mm  
 Light Compatibility: T8 - 2x 16w / 18w / 20w LED Tube  
 T8 - 2x36w Fluorescent Tube

# Wrap Around (Round)

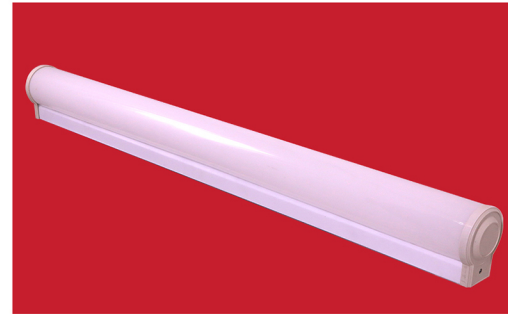
**FF-119**



Included: Housing only w/ lamp holder.  
Description: Wrap-around diffuser. Body made in zinc phosphate steel sheet housing in white powder coat paint finish.  
Diffuser: Acrylic Opal White Round  
Dimension: L 620mm x W 90mm x H 120mm  
Light Compatibility: T8 - 1 x 8w / 9w / 10w LED Tube  
T8 - 1x18w Fluorescent Tube

---

**FF-120**



Included: Housing only w/ lamp holder.  
Description: Wrap-around diffuser. Body made in zinc phosphate steel sheet housing in white powder coat paint finish.  
Diffuser: Acrylic Opal White Round  
Dimension: L 1230mm x W 90mm x H 120mm  
Light Compatibility: T8 - 1x 16w / 18w / 20w LED Tube  
T8- 1 x36w Fluorescent Tube

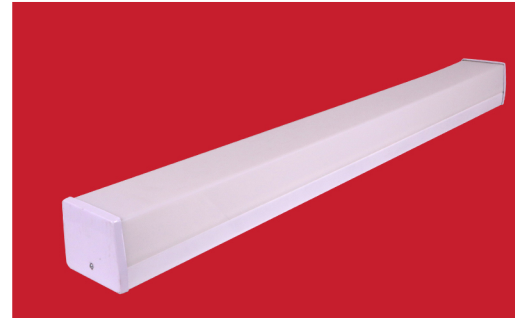
---



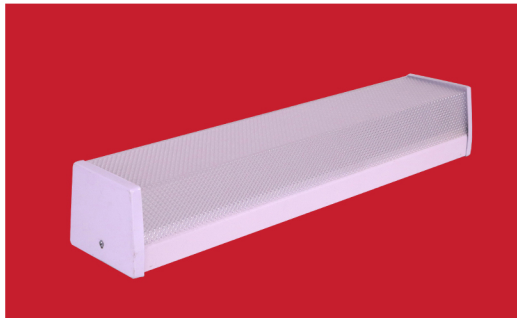
# Wrap Around (Square)


**FF-127**

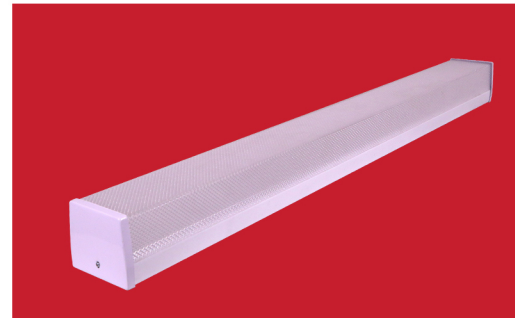

Included: Housing only w/ lamp holder.  
 Description: Wrap-around diffuser. Body in zinc phosphate die-formed steel sheet White powder coat paint finish.  
 Diffuser: Acrylic Opal White Square  
 Dimension: L 610mm x W 120mm x H 100mm  
 Light Compatibility: T8- 2x8w / 9w / 10w LED Tube  
 T8- 2x 18w Fluorescent Tube

**FF-128**


Included: Housing only w/ lamp holder.  
 Description: Wrap-around diffuser. Body in zinc phosphate die-formed steel sheet White powder coat paint finish.  
 Diffuser: Acrylic Opal White Square  
 Dimension: L 1225mm x W 120mm x H 100mm  
 Light Compatibility: T8 - 2x16w / 18w /20w LED Tube  
 T8- 2x36w Fluorescent Tube

**FF-129**


Included: Housing only w/ lamp holder.  
 Description: Wrap-around diffuser. Body in zinc phosphate die-formed steel sheet White powder coat paint finish.  
 Diffuser: Prismatic Square  
 Dimension: L 610mm x W 120mm x H 100mm  
 Light Compatibility: T8 - 2 x8w / 9w /10w LED Tube  
 T8 - 2x18w Fluorescent Tube

**FF-130**


Included: Housing only w/ lamp holder.  
 Description: Wrap-around diffuser. Body in zinc phosphate die-formed steel sheet White powder coat paint finish.  
 Diffuser: Prismatic Square  
 Dimension: L 1225mm x W 120mm x H 100mm  
 Light Compatibility: T8 - 2x16w/ 18w/ 20w LED Tube  
 T8- 2x36w Fluorescent Tube

# Wrap Around (Square)

**FF-131**



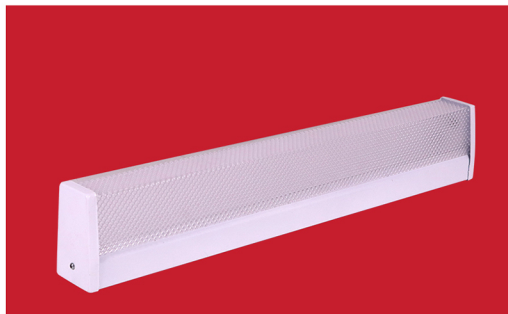
Included: Housing only w/ lamp holder.  
Description: Wrap-around diffuser. Body in zinc phosphate die-formed steel sheet White powder coat paint finish.  
Diffuser: Acrylic Opal White Square  
Dimension: L 610mm x W 70mm x H 100mm  
Light Compatibility: T8 - 1x8w / 9w / 10w LED Tube  
T8 - 1x18w Fluorescent Tube

**FF-132**



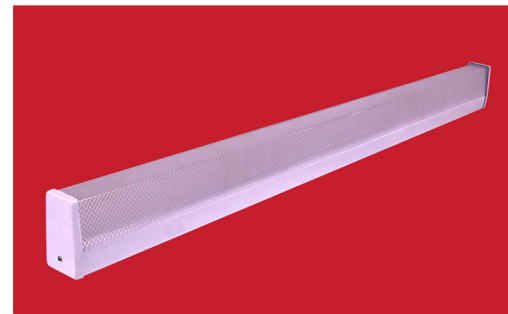
Included: Housing only w/ lamp holder.  
Description: Wrap-around diffuser. Body in zinc phosphate die-formed steel sheet White powder coat paint finish.  
Diffuser: Acrylic Opal White Square  
Dimension: L 1225mm x W 70mm x H 100mm  
Light Compatibility: T8 - 1x 16w / 18w / 20w LED Tube  
T8 - 1x36w Fluorescent Tube

**FF-133**



Included: Housing only w/ lamp holder.  
Description: Wrap-around diffuser. Body in zinc phosphate die-formed steel sheet White powder coat paint finish.  
Diffuser: Prismatic Square  
Dimension: L 610mm x W 70mm x H 100mm  
Light Compatibility: T8 - 1x 8w/ 9w / 10w LED Tube  
T8 - 1 x18w Fluorescent Tube

**FF-134**



Included: Housing only w/ lamp holder.  
Description: Wrap-around diffuser. Body in zinc phosphate die-formed steel sheet White powder coat paint finish.  
Diffuser: Prismatic Square  
Dimension: L 1225mm x W 70mm x H 100mm  
Light Compatibility: T8 - 1x 16w / 18w / 20w LED Tube  
T8 - 1x36w Fluorescent Tube

# Spring Loaded Box Type

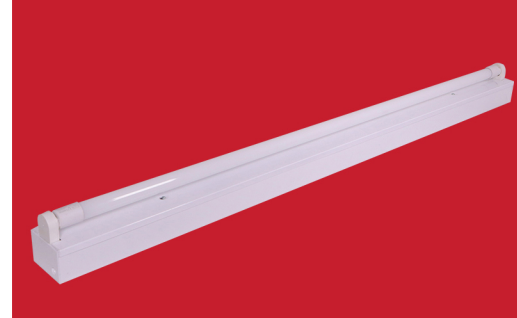


**FF-139**



Included: Housing only w/ Spring Loaded lamp holder.  
Description: Box Type. Body made in Zinc phosphate die-formed steel sheet. White powder coat paint finish.  
Dimension: L 630mm x W 80mm x H 95mm  
Light Compatibility: T8 - 1x8w / 9w / 10w LED Tube  
T8 - 1x 18w Fluorescent Tube

**FF-140**



Included: Housing only w/ Spring Loaded lamp holder.  
Description: Box Type. Body made in Zinc phosphate die-formed steel sheet. White powder coat paint finish.  
Dimension: L 1240mm x W 80mm x H 95mm  
Light Compatibility: T8 - 1 x 16w / 18w / 20w LED Tube  
T8- 1x36w Fluorescent Tube

**FF-141**



Included: Housing only w/ Spring Loaded lamp holder.  
Description: Box type. Body made in Zinc phosphate die-formed steel sheet. White powder coat paint finish.  
Dimension: L 630mm x W 120mm x H 95mm  
Light Compatibility: T8 - 2x8w / 9w / 10w LED Tube  
T8 - 2x18w Fluorescent Tube

**FF-142**



Included: Housing only w/ Spring Loaded lamp holder.  
Description: Box Type. Body made in Zinc phosphate die-formed steel sheet. White powder coat paint finish.  
Dimension: L 1240mm x W 120mm x H 95mm  
Light Compatibility: T8 - 2 x16w / 18w / 20w LED Tube  
T8 - 2x36w Fluorescent Tube



# Standard Box Type

**FF-145**



Included: Housing only w/ lamp holder.  
Description: Standard box type. Made in zinc phosphate die-formed steel sheet. White powder coat paint finish.  
Dimension: L 610mm x W 80mm x H 95mm  
Light Compatibility: T8 - 1x8w / 9w / 10w LED Tube  
T8 - 1 x18w Fluorescent Tube

**FF-146**



Included: Housing only w/ lamp holder.  
Description: Standard box type. Made in zinc phosphate die-formed steel sheet. White powder coat paint finish.  
Dimension: L 1220mm x W 80mm x H 95mm  
Light Compatibility: T8 - 1x16w / 18w / 20w LED Tube  
T8 - 1x36w Fluorescent Tube

**FF-147**



Included: Housing only w/ lamp holder.  
Description: Standard box type. Made in zinc phosphate die-formed steel sheet. White powder coat paint finish.  
Dimension: L 610mm x W 120mm x H 95mm  
Light Compatibility: T8 - 2x8w / 9w / 10w LED Tube  
T8 - 2x18w Fluorescent Tube

**FF-148**



Included: Housing only w/ lamp holder.  
Description: Standard box type. Made in zinc phosphate die-formed steel sheet. White powder coat paint finish.  
Dimension: L 1220mm x W 120mm x H 95mm  
Light Compatibility: T8 - 2x16w / 18w / 20w LED Tube  
T8 - 2x36w Fluorescent Tube

# Office Lighting



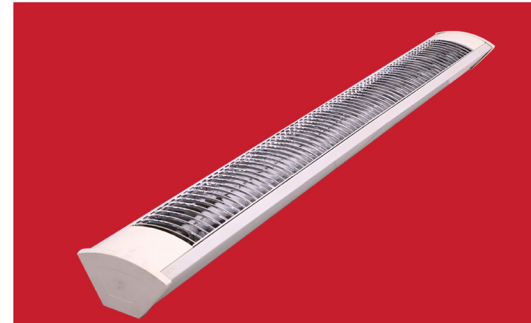
**FF-149**



Description: Housing only w/ Wiring and lamp holder. ☐ White  
 Construction: Zinc phosphate die-formed steel sheet. White powder coat paint finish.  
 Diffuser: Silver Grill  
 Dimension: L 790mm x W 150mm x H 87mm  
 Light Compatibility: 1x18W  
 Box Size:  
 Weight

---

**FF-150**



Description: Housing only w/ Wiring and lamp holder. ☐ White  
 Construction: Zinc phosphate die-formed steel sheet. White powder coat paint finish.  
 Diffuser: Silver Grill  
 Dimension: L 1360mm x W 150mm x H 87mm  
 Light Compatibility: 1x36W  
 Box Size:  
 Weight

---

# Industrial Type Spring loaded

## Powdered Coated Reflector

**FF-170**



Included: Housing only with springloaded lamp holder  
Description: Industrial Type. Made in zinc phosphate steel sheet housing in white powder coat paint finish.  
Reflector: White Powder coated  
Dimension: L 630mm x W 241mm x H 108mm  
Light Compatibility: T8 - 1x8w / 9w /10w LED Tube  
T8 - 1x18w Fluorescent Tube

**FF-171**



Included: Housing only with springloaded lamp holder  
Description: Industrial Type. Made in zinc phosphate steel sheet in white powder coat paint finish.  
Reflector: White powder-coated  
Dimension: L 1240mm x W 241mm x H 108mm  
Light Compatibility: T8- 1 x16w/ 18w/ 20w LED Tube  
T8 - 1x36w Fluorescent Tube

**FF-172**



Included: Housing only with springloaded lamp holder  
Description: Industrial Type. Made in Zinc phosphate steel sheet in white powder coat paint finish.  
Reflector: White powder-coated  
Dimension: L 630mm x W 267mm x H 108mm  
Light Compatibility: T8 - 2x 8w /9w /10w LED Tube  
T8 - 2x18w Fluorescent Tube

**FF-173**



Included: Housing only with springloaded lamp holder  
Description: Industrial Type. Made in zinc phosphate steel sheet in white powder coat paint finish.  
Reflector: White Powder-coated  
Dimension: L 1240mm x W 267mm x H 108mm  
Light Compatibility: T8 - 2x 16w / 18w /20w LED Tube  
T8- 2x36w Fluorescent Tube



# Industrial Type Spring loaded Mirrorized Reflector

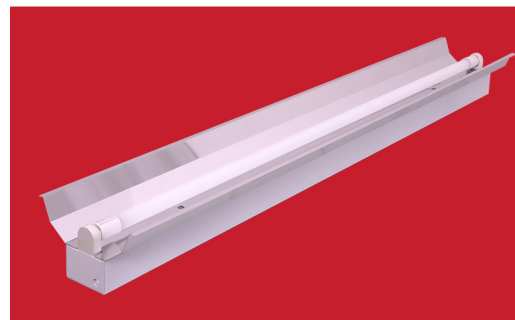


**FF-174**



Included: Housing only with springloaded lamp holder  
Description: Industrial Type. Made in zinc phosphate steel sheet in white powder coat paint finish.  
Reflector: Mirrorized aluminum reflector  
Dimension: L 630mm x W 241mm x H 108mm  
Light Compatibility: T8 - 1x8w / 9w / 10w LED Tube  
T8 - 1x 18w Fluorescent Tube

**FF-175**



Included: Housing only with springloaded lamp holder.  
Description: Industrial Type. Made in zinc phosphate steel sheet in white powder coat paint finish.  
Reflector: Mirrorized aluminum reflector  
Dimension: L 1240mm x W 241mm x H 108mm  
Light Compatibility: T8 - 1x16w / 18w/ 20w LED Tube  
T8- 1x36w Fluorescent Tube

**FF-176**



Included: Housing only with springloaded lamp holder  
Description: Industrial Type. Made in zinc phosphate steel sheet housing in white powder coat finish.  
Reflector: Mirrorized aluminum reflector.  
Dimension: L 630mm x W 267mm x H 108mm  
Light Compatibility: T8 - 2x8w / 9w/ 10w LED Tube  
T8- 2x18w Fluorescent Tube

**FF-177**



Included: Housing only with springloaded lamp holder  
Description: Industrial Type. Made in zinc Phosphate steel sheet housing in white powder coat paint finish.  
Reflector: Mirrorized aluminum reflector  
Dimension: L1240mm x W 267mm x H 108mm  
Light Compatibility: T8 - 2x16w / 18w / 20w LED Tube  
T8- 2x36w Fluorescent Tube

# Weatherproof

**FF-191 SLIM**



Included: Housing w/ LED Wiring (Double Ended) and lamp holder.

Description: Weatherproof. The cover is polycarbonate, injection molded UV stabilized. The base is A.B.S. Injection molded.

Dimension: L664mm x W67mm x H 70mm

Light Compatibility: T8 - 1x8w / 9w /10w LED Tube

**FF-192**



Included: Housing w/ Wiring for NPF Ballast and lamp holder.

Description: Weatherproof. The cover is polycarbonate, injection molded UV stabilized. The base is A.B.S. Injection molded.

Dimension: L 673mm x W 155mm x H 95mm

Light Compatibility: T8 - 2x8w / 9w /10w LED Tube

T8 - 2x18w Fluorescent Tube

**FF-193 SLIM**



Included: Housing w/ LED Wiring (Double Ended) and lamp holder.

Description: Weatherproof. The cover is polycarbonate, injection molded UV stabilized. The base is A.B.S. Injection molded.

Dimension: L 1270mm x W 70mm x H 75mm

Light Compatibility: T8 - 1x16w / 18w /20w LED Tube

**FF-194 SLIM**



Included: Housing w/ LED Wiring (Double ended) and lamp holder.

Description: Weatherproof. The cover is polycarbonate, injection molded UV stabilized. The base is A.B.S. Injection molded.

Dimension: L 1270mm x W 100mm x H 75mm

Light Compatibility: T8 - 2x16w / 18w / 20w LED Tube

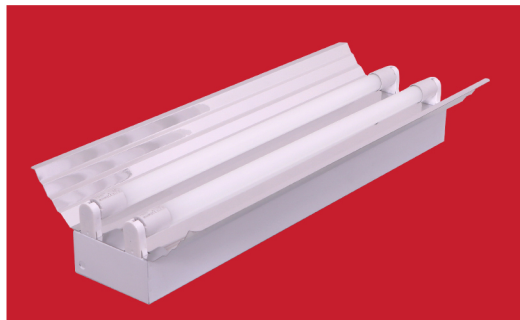
# Industrial Step Type


**FF-195**


Included: Housing w/ lamp holder.  
 Description: Industrial Step Type. Made in zinc phosphate steel sheet in white powder coat paint finish.  
 Reflector: Mirrorized aluminum reflector.  
 Dimension: L 610mm x W 225mm x H 115mm  
 Light Compatibility: T8 - 1x8w / 9w /10w LED Tube  
 T8 - 1x18w Fluorescent Tube

**FF-196**


Included: Housing w/ lamp holder.  
 Description: Industrial Step Type. Made in zinc phosphate steel sheet housing in white powder coat paint finish.  
 Reflector: Mirrorized Aluminum reflector  
 Dimension: L 1220mm x W 225mm x H 115mm  
 Light Compatibility: T8 - 1x16w / 18w /20w LED Tube  
 T8- 1x36w Fluorescent Tube

**FF-197**


Included: Housing w/ lamp holder.  
 Description: Industrial Step Type. body made in zinc phosphate steel sheet housing in white powder coat paint finish.  
 Reflector: Mirrorized Aluminum reflector  
 Dimension: L 610mm x W 251mm x H 115mm  
 Light Compatibility: T8 - 2x8w /9w / 10w LED Tube  
 T8- 2x18w Fluorescent Tube

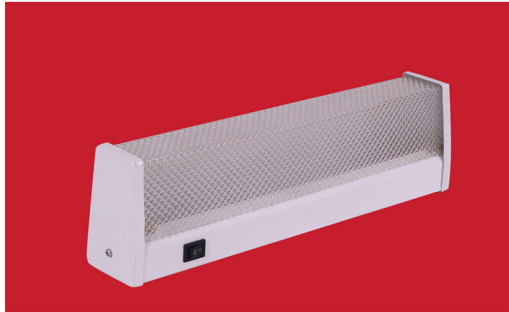
**FF-198**


Included: Housing w/ lamp holder.  
 Description: Industrial Step Type. Body made in zinc phosphate steel sheet housing in white powder coat paint finish.  
 Reflector: Mirrorized Aluminum reflector  
 Dimension: L 1220mm x W 251mm x H 115mm  
 Light Compatibility: T8 - 2 x16w / 18w / 20w LED Tube  
 T8 - 2X36w Fluorescent Tube



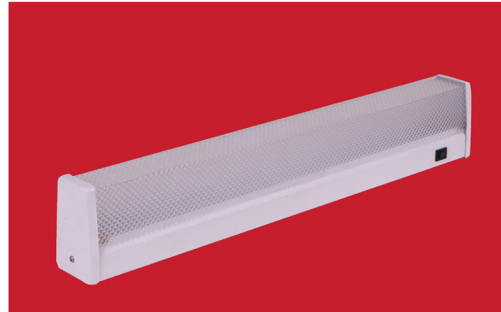
# Wrap Around with Switch

**FF-199**



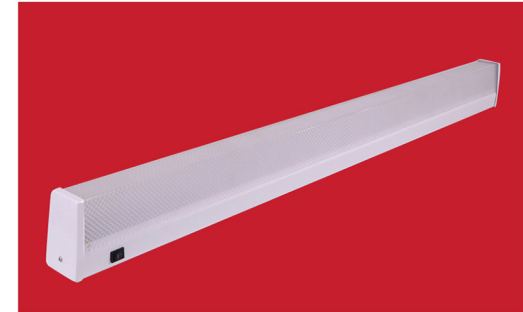
Included: Housing w/ Switch and lamp holder.  
Description: Body made in zinc phosphate die-formed steel sheet. White powder coat paint finish.  
Diffuser: Prismatic  
Dimension: L 360mm x W 60mm x H 105mm  
Light Compatibility: T8 - 1x10w Fluorescent Tube

**FF-200**



Included: Housing w/ Switch and lamp holder.  
Description: Made in zinc phosphate steel sheet housing in white powder coat paint finish.  
Diffuser: Prismatic diffuser  
Dimension: L 620mm x W 60mm x H 105mm  
Light Compatibility: T8 - 1x8w /9w /10w LED Tube  
T8- 1x18w Fluorescent Tube

**FF-201**



Included: Housing w/ Switch and lamp holder.  
Description: Made in zinc phosphate steel sheet housing in white powder coat paint finish.  
Diffuser: Prismatic Diffuser  
Dimension: L 1220mm x W 60mm x H 105mm  
Light Compatibility: T8 - 1 x16w /18w/ 20w LED Tube  
T8- 1x36w Fluorescent Tube

**FF-202**



Included: Housing w/ Switch and lamp holder.  
Description: Made in zinc phosphate steel sheet housing in white powder coat paint finish.  
Diffuser: Acrylic Opal  
Dimension: L 360mm x W 60mm x H 105mm  
Light Compatibility: T8 - 1x10w Fluorescent Tube

**FF-203**



Included: Housing w/ Switch and lamp holder.  
Description: Made in zinc phosphate steel sheet housing in white powder coat paint finish.  
Diffuser: Acrylic Opal  
Dimension: L 620mm x W 60mm x H 105mm  
Light Compatibility: T8- 1x8w /9w/10w LED Tube  
T8- 1x18w Fluorescent Tube

**FF-204**



Included: Housing w/ Switch and lamp holder.  
Description: Zinc phosphate steel sheet housing in white powder coat paint finish.  
Diffuser: Acrylic Opal  
Dimension: L 1220mm x W 60mm x H 105mm  
Light Compatibility: T8- 1x16w / 18w / 20w LED Tube  
T8- 1X36w Fluorescent Tube

# T5 Box Type



## FF-209 1x14W T5 - Box Type



Included: Housing w/ lamp holder.  
Description: Zinc Phosphate die-formed steel sheet. White powder coat paint finish.  
Dimension: L 575mm x W 46mm x H 37mm  
Light Compatibility: T5 - 1x14W Fluorescent Tube

## FF-209 1x21W T5 - Box Type



Included: Housing w/ lamp holder.  
Description: Zinc Phosphate die-formed steel sheet. White powder coat paint finish.  
Dimension: L 876mm x W 46mm x H 37mm  
Light Compatibility: T5 - 1x21W Fluorescent Tube

## FF-209 1x28W T5 - Box Type



Included: Housing w/ lamp holder.  
Description: Zinc Phosphate die-formed steel sheet. White powder coat paint finish.  
Dimension: L 1175mm x W 46mm x H 37mm  
Light Compatibility: T5 - 1x28W Fluorescent Tube

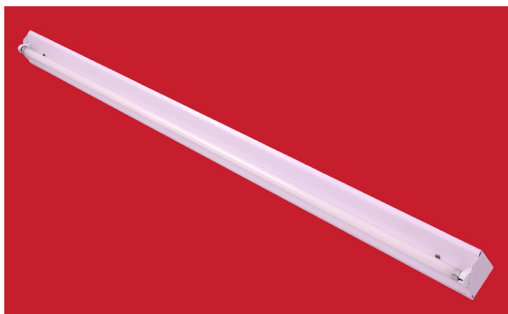
## FF-209 1x35W T5 Box Type



Included: Housing w/ lamp holder.  
Description: Zinc Phosphate die-formed steel sheet. White powder coat paint finish.  
Dimension: L 1473mm x W 46mm x H 37mm  
Light Compatibility: T5 - 1x35W

## T5 Corner Type

**FF-210 28W**



Included: Housing w/ lamp holder.  
Description: Zinc phosphate die-formed steel sheet. White powder coat paint finish.  
Dimension: L 1170mm x W 78mm x H 53mm  
Light Compatibility: T5 - 1x28W Fluorescent Tube

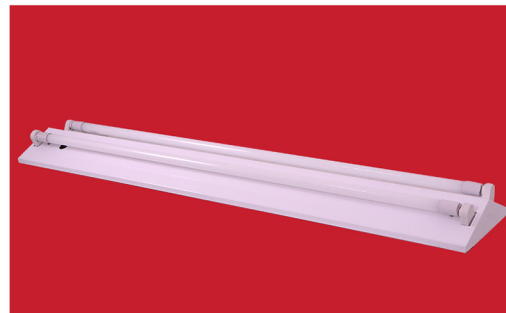
## V Type

**FF-211 2x36W ROTARY**



Included: Housing w/ Rotary lamp holder.  
Description: Zinc phosphate die-formed steel sheet. White powder coat paint finish.  
Dimension: L 1250mm x W 240mm x H 70mm  
Light Compatibility: T8 - 2x16w /18w /20w LED Tube

**FF-211 2x36W SPRINGLOADED**

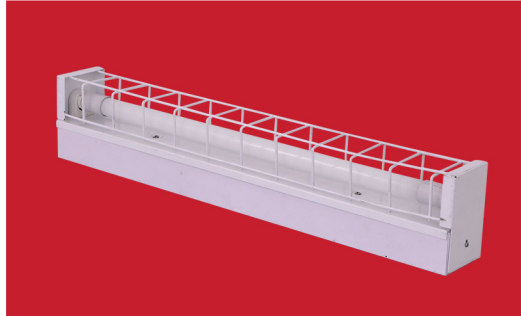


Included: Housing w/ Springloaded lamp holder.  
Description: Zinc phosphate die-formed steel sheet. White powder coat paint finish.  
Dimension: L 1250mm x W 240mm x H 70mm  
Light Compatibility: T8 - 2x16w /18w /20w LED Tube



# Wire Guard

## FF-219 1x18W - SPRINGLOADED



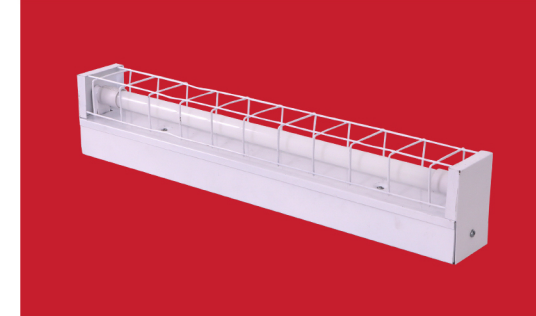
Included: Housing with Springloaded lamp holder.  
Description: Box Type with wire guard. Made in zinc phosphate steel sheet in white powder coat paint finish  
Dimension: L 600mm x W 78mm x H 118mm  
Light Compatibility: T8 - 1x8w x 9w / 10w LED Tube  
T8 - 1x18w Fluorescent Tube

## FF-219 1x36W SPRINGLOADED



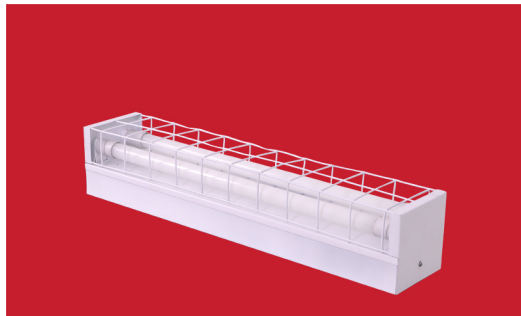
Included: Housing with Springloaded lamp holder.  
Description: Box Type with wire guard. Made in zinc phosphate steel sheet in white powder coat paint finish  
Dimension: L 1200mm x W 78mm x H 118mm  
Light Compatibility: T8 - 1 x 16w /18w /20w LED Tube  
T8 - 1x36w Fluorescent Tube

## FF-219 1x18W



Included: Housing with rotary lamp holder  
Description: Box Type with wire guard. Made in zinc phosphate steel sheet in white powder coat paint finish  
Dimension: L 600mm x W 78mm x H 118mm  
Light Compatibility: T8 - 1x8w / 9w /10w LED Tube  
T8 - 1x18w Fluorescent Tube

## FF-219 2x18W



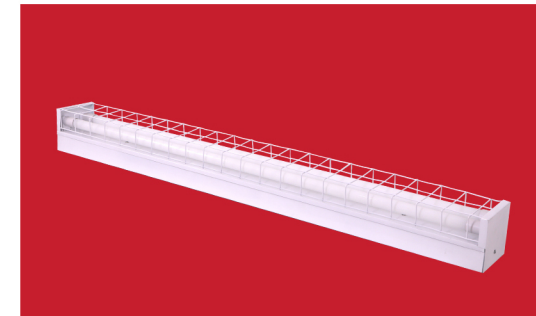
Included: Housing with Rotary lamp holder.  
Description: Box Type with wire guard. Made in zinc phosphate steel sheet in white powder coat paint finish  
Dimension: L 600mm x W 120mm x H 118mm  
Light Compatibility: T8 - 2 x 8w / 9w /10w LED Tube  
T8 - 2x18w Fluorescent Tube

## FF-219 1x36W



Included: Housing with Rotary lamp holder.  
Description: Box Type with wire guard. Made in zinc phosphate steel sheet in white powder coat paint finish  
Dimension: L 1200mm x W 78mm x H 118mm  
Light Compatibility: T8 -1 x 16w / 18w / 20w LED Tube  
T8 - 1 x36w Fluorescent Tube

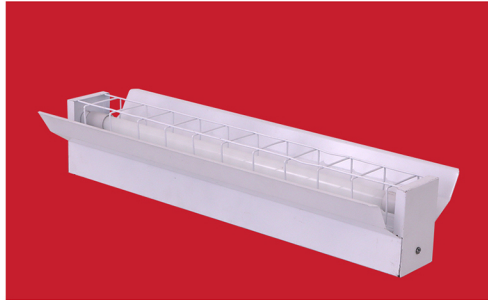
## FF-219 2x36W



Included: Housing with Rotary lamp holder.  
Description: Box Type with wire guard. Made in zinc phosphate steel sheet in white powder coat paint finish  
Dimension: L 1200mm x W 120mm x H 118mm  
Light Compatibility: T8 - 2x 16w / 18w / 20w LED Tube  
T8 - 2x 36w Fluorescent Tube

# Industrial Type with Wire Guard

**FF-220 1x18w**



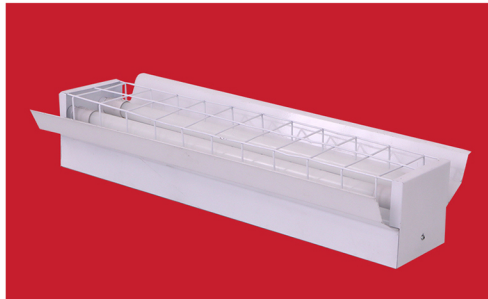
Included: Housing with lamp holder.  
Description: Industrial Type with wire guard. Made in zinc phosphate steel sheet in white powder coat paint finish  
Reflector: Powder-coated paint finish  
Dimension: L 600mm x W 120mm x H 118mm  
Light Compatibility: T8 - 1x8w / 9w / 10w LED Tube  
T8 - 1x18w Fluorescent Tube

**FF-220 1x36w**



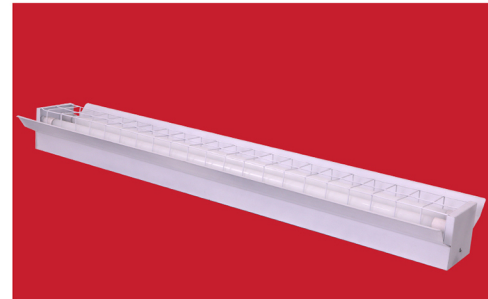
Included: Housing with lamp holder.  
Description: Industrial Type with wire guard. Made in zinc phosphate steel sheet in white powder coat paint finish  
Reflector: Powder-coated paint finish  
Dimension: L 1200mm x W 120mm x H 118mm  
Light Compatibility: T8 - 1x16w / 18w / 20w LED Tube  
T8 - 1x36w Fluorescent Tube

**FF-220 2x18w**



Included: Housing with lamp holder.  
Description: Industrial Type with wire guard. Made in zinc phosphate steel sheet in white powder coat paint finish  
Reflector: Powder-coated paint finish  
Dimension: L 600mm x W 220mm x H 118mm  
Light Compatibility: T8 - 2 x 8w / 9w / 10w LED Tube  
T8 - 2x18w Fluorescent Tube

**FF-220 2x36w**



Included: Housing with lamp holder.  
Description: Industrial Type with wire guard. Made in zinc phosphate steel sheet in white powder coat paint finish  
Reflector: Powder-coated paint finish  
Dimension: L 1200mm x W 220mm x H 118mm  
Light Compatibility: T8 - 2x16w / 18w / 20w LED Tube  
T8 - 2x36w Fluorescent Tube



brilliant

## Halogen Downlight

These fixtures are typically designed for recessed installation in ceilings, walls or other surfaces. They are engineered to emit light in a specific direction, often with an adjustable beam angle, allowing for precise illumination of targeted areas or objects. Compatible with various light sources including LED's and halogen bulbs. These Fixtures are versatile and space saving that can add both functionality and aesthetic appeal to various settings, including homes, offices, retail spaces and hospitality environments.



### HD 237



Black White

Included: Housing Fixtures only with MR16 lamp holder.  
Description: Aluminum die-cast in a powder-coated paint finish.

Angle: Multi-directional.

Dimensions: Ø 130mm x H76mm / Hole size Ø 108mm

Light Compatibility: GU5.3 MR16 LED / Halogen

### HD 245



Black White

Included: Housing Fixtures only with MR16 lamp holder.

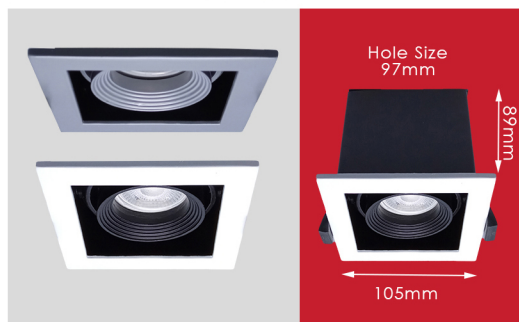
Description: Aluminum die-cast in a powder-coated paint finish.

Angle: Fixed

Dimensions: Ø 77mm x H 23mm / Hole size Ø 61mm

Light Compatibility: GU5.3 MR16 LED / Halogen

### HD 250-1



Gray White

Included: Housing Fixtures only with MR16 lamp holder.

Description: Aluminum die-cast rim, powder-coated paint.

Angle: directional.

Dimensions: L 105mm x W 105 x H 89mm / Hole size 97mm

Light Compatibility: GU5.3 MR16 LED / Halogen

### HD 256



Black White

Included: Housing Fixtures only with MR16 lamp holder.

Description: Aluminum die-cast in a powder-coated paint finish.

Angle: directional.

Dimensions: Ø 82mm x H 22mm / Hole size Ø 71mm

Light Compatibility: MR16 GU5.3 LED

### HD 259



Included: Housing Fixtures only with MR16 lamp holder.

Description: Aluminum die-cast in a powder-coated paint finish.

Angle: directional.

Dimensions: Ø 95mm x H30mm / Hole size Ø79mm

Light Compatibility: MR16 GU5.3 LED / Halogen

Black White



### HD 295



White

Included: Housing Fixtures only with MR16 lamp holder.

Description: Aluminum die-cast body in a powder-coated paint finish. With reflector.

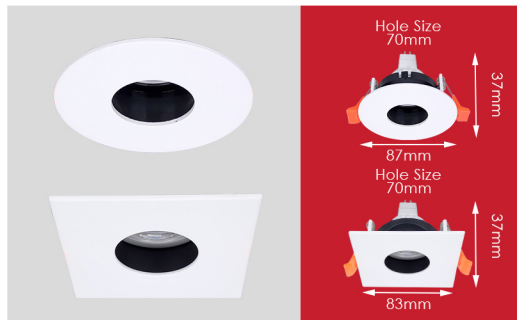
Angle: Fixed

Dimensions: Rd - Ø 92mm x H54mm / Hole size Ø 82mm

SQ - L93mm x W 93mm x H55mm / Hole size Ø 82mm

Light Compatibility: MR16 GU5.3

### HD 296



White

Included: Housing Fixtures only with MR16 lamp holder.

Description: Aluminum die-cast body in a powder-coated paint finish.

Angle: Fixed

Dimensions: (SQ - L83mm x W 83mm x H 37mm / Hole size Ø 70mm)

(RD - Ø 87mm x H37mm / Hole size Ø 70mm)

Light Compatibility: MR16

### HD 297



White

Included: Housing Fixtures only with MR16 lamp holder.

Description: Aluminum die-cast body in a powder-coated paint finish.

Angle: Fixed

Dimensions: (Rd - Ø 89mm x H37mm / Hole Size Ø 70mm )

(SQ - L83mm x W83mm x H37mm / Hole size Ø 70mm)

Light Compatibility: MR16

### HD 298



White

Included: Housing Fixtures only with MR16 lamp holder.

Description: Aluminum die-cast body in a powder-coated paint finish.

Angle: Directional

Dimensions: (SQ- L 89mm x W 89mm x H 41mm / Hole size L78mm

x W 78mm ) (Rd - Ø 93mm x H 41mm / Hole size Ø 83mm )

Light Compatibility: MR16 GU5.3

### HD 299



White

Included: Housing Fixtures only with MR16 lamp holder.

Description: Aluminum die-cast body in a powder-coated paint finish.

Angle: Directional

Dimensions: (SQ - L110mm x W 110mm x H36mm /Hole size Ø92mm)

(RD - Ø 95mm x H30mm / Hole size Ø80mm )

Light Compatibility: MR16

### HD 299-105



White

Included: Housing Fixtures only with MR16 lamp holder.

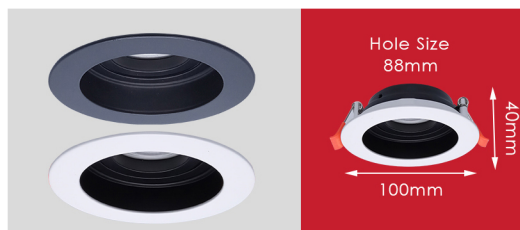
Description: Aluminum die-cast body in a powder-coated paint finish.

Angle: Directional

Dimensions: Ø 105mm x H30mm / Hole size Ø80mm

Light Compatibility: MR16

### HD 300



Included: Housing Fixtures only with MR16 lamp holder.

Description: Aluminum die-cast body in a powder-coated paint finish.

Angle: Directional

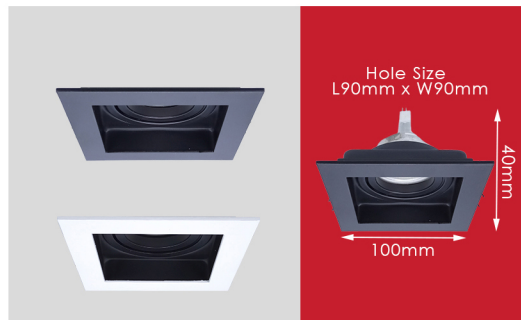
Dimensions: Ø 100mm x H 40mm / Hole size Ø 88mm

Light Compatibility: MR16

Black/Black White/Black



### HD 300-1



Black/Black White/Black

Included: Housing Fixtures only with MR16 lamp holder.  
Description: Aluminum die-cast body in a powder-coated paint finish.

Angle: Directional  
Dimensions: L100mm x W 100mm x H 40mm /  
Hole size L90mm x W 90mm  
Light Compatibility: 1 x MR16

### HD 300-2



Black/Black White/Black

Included: Housing Fixtures only with MR16 lamp holder.  
Description: Aluminum die-cast body in a powder-coated paint finish.

Angle: Directional  
Dimensions: L 185mm x W 100mm x H 32mm /  
Hole size L 167mm x W 90mm  
Light Compatibility: 2 x MR16

### HD 300-3



Black/Black White/Black

Included: Housing Fixtures only with MR16 lamp holder.  
Description: Aluminum die-cast body in a powder-coated paint finish.

Angle: Directional  
Dimensions: L 270mm x W 100mm x H 30mm /  
Hole size L260mm x W 90mm  
Light Compatibility: 3 x MR16

### HD 301 (ROUND)



White/Black White/Gray

Included: Housing Fixtures only with MR16 lamp holder.  
Description: Aluminum die-cast body in a powder-coated paint finish.

Angle: Fixed  
Dimensions: Ø 89 mm x H 40mm / Hole size Ø 77mm  
Light Compatibility: MR16

### HD 301 (SQUARE)



White/Black White/Gray

Included: Housing Fixtures only with MR16 lamp holder.  
Description: Aluminum die-cast body in a powder-coated paint finish.

Angle: Fixed  
Dimensions: L 85mm x W 85mm x H37mm /  
Hole size L77mm x W77mm  
Light Compatibility: MR16

### HD 302

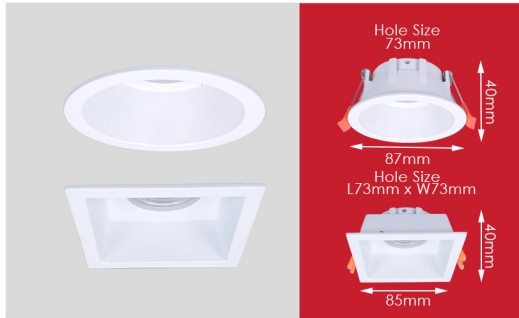


Included: Housing Fixtures only with MR16 lamp holder.  
Description: Aluminum die-cast body in a powder-coated paint finish.

Angle: Directional  
Dimensions: Ø 83mm x H 30mm / Hole size Ø 70mm  
Light Compatibility: MR16

Black/Chrome Black/Black White/White  
White/Chrome White/Black

### HD 303



☐ White

Included: Housing Fixtures only with MR16 lamp holder.  
 Description: Aluminum die-cast body in a powder-coated paint finish.

Angle: fixed

Dimensions: ( Round - Ø 87mm x H 40mm / Hole size Ø 73mm )  
 ( Square - L 85mm x W 85mm x H 40mm / L73mm x W 73mm )

Light Compatibility: MR16 GU5.3

### HD 304



☐ White/White ☐ White/Matte

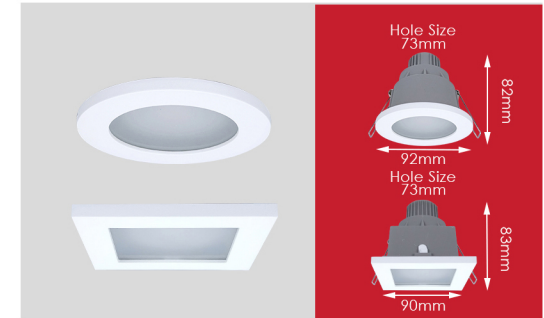
Included: Housing Fixtures only with MR16 lamp holder.  
 Description: Aluminum die-cast body in a powder-coated paint finish.

Angle: fixed

Dimensions: Ø 110mm x 50mm / Hole size Ø 73mm

Light Compatibility: MR16 GU5.3

### HD 305



☐ White

Included: Housing Fixtures only with GU10 lamp holder.  
 Description: Aluminum die-cast body in a powder-coated paint finish. With a full frosted glass cover.

Dimensions: (Rd - Ø 92mm x 82mm/ Hole size Ø 73mm)

(Sq - L90mm x W90mm x H 83mm / Hole size L73mm x W 73mm)

Light Compatibility: GU10

### HD 306 (ROUND)



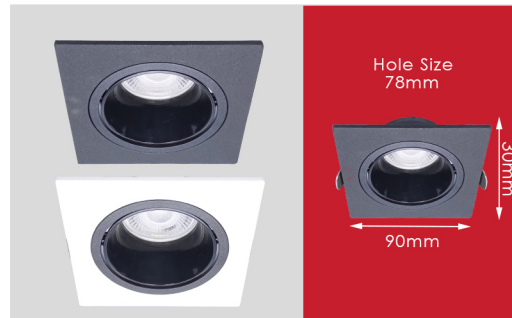
☐ Black/Black ☐ White/Black

Included: Housing Fixture only w/ GU10 socket.  
 Description: Aluminum die-cast rim in a powder-coated paint finish.

Dimensions: Ø 84mm x H30mm / Hole size Ø 78mm

Light Compatibility: GU10 / MR16

### HD 306-1 (SQUARE)



☐ Black/Black ☐ White/Black

Included: Housing Fixture only w/ GU10 socket.  
 Description: Aluminum die-cast rim in a powder-coated paint finish.

Dimensions: L90mm x W 90mm x H 30mm / Hole size Ø 78mm

Light Compatibility: GU10 x 1 / MR16 x 1

### HD 306-2 (SQUARE)



☐ Black/Black ☐ White/Black

Included: Housing Fixture only w/ GU10 socket.  
 Description: Aluminum die-cast rim in a powder-coated paint finish.

Dimensions: L177mm x W90mm x H30mm /Hole size L158mm x W77mm

Light Compatibility: GU10 x 2 / MR16 x 2

### HD 307-1



Included: Housing Fixture only w/ GU10 socket.  
 Description: Aluminum die-cast rim in a powder-coated paint finish.

Dimensions: L125mm x W125mm x H43mm /

Hole size L100mm x W100mm

Light Compatibility: 1 x GU10 / MR16

Packaging: 2pcs/Box

☐ White/Black

### HD 307-2



Included: Housing Fixture only w/ GU10 socket.  
 Description: Aluminum die-cast rim in a powder-coated paint finish.

Dimensions: L225mm x W125mm x H43mm /

Hole size L197mm x W 100mm

Light Compatibility: 2 x GU10 / MR16

Packaging: 2pcs/Box

☐ White/Black



brilliant

## Halogen Tracklight

A track light is a kind of fixture where the lighting runs along a rail or a bar. The lights can be used to focus on a specific spot at your house or light up a part of it. There are many variants of track lights available these days. But, it is important that you choose the one that matches the vibe and colour scheme of your place.



### HTB 501



Black White

Included: Housing only, with 501 Head with Metal track Base and MR16 lamp holder.

Description: Aluminum Die-cast, powder-coated finish.

Dimension: L 135mm x W 60mm x H 150mm

Light Compatibility: MR16 LED 220V

### HTB 503



Black White

Included: Housing only, with 503 Head with Metal track Base and MR16 lamp holder.

Description: Aluminum Die-cast, powder-coated finish.

Dimension: Ø60mm x W 135mm x H 150mm

Light Compatibility: MR16 LED 220V

### HSP 401



Black White

Included: Housing only, with 401 Head with Metal spot Base w/ bracket and MR16 lamp holder.

Description: Aluminum Die-cast, powder-coated finish.

Dimension: L 135mm x W 60mm x H 116mm

Light Compatibility: MR16 LED 220V

### HSP 402



Included: Housing only, with 402 Head with Metal spot Base w/ bracket and MR16 lamp holder.

Description: Aluminum Die-cast, powder-coated finish.

Dimension: Ø60mm x W 135mm x H 116mm

Light Compatibility: MR16 LED 220V

Black White



## HSP 403



Included: Housing only, with 403 Head with Metal spot Base w/ bracket and MR16 lamp holder.  
Description: Aluminum Die-cast, powder-coated finish.  
Dimension: Ø60mm x W 135mm x H 116mm  
Light Compatibility: MR16 LED 220V

■ Black □ White

## HTR 335



■ Black □ White

Description: Housing only, with GU10 lamp holder.  
Dimensions: Ø 57mm / L 85mm x H 137mm  
Light Compatibility: GU10 LED 220V

## HTR 336



■ Black □ White

Description: Housing only, with GU10 Lamp Holder.  
Dimensions: L 84mm x W 60mm x H 137mm  
Light Compatibility: GU10 LED 220V

## HTR 337



■ Black + Copper □ White ■ Black

Description: Housing only with MR16 lamp holder  
Dimensions: Ø 55mm x L 100mm x H 120mm  
Light Compatibility: MR16 LED 220V

## HTR 338



■ Black □ White

Description: Housing only with GU10 lamp holder.  
Dimensions: Ø 57mm x L 97mm x H 120mm  
Light Compatibility: GU10 LED 220V

## HTR 339 (SHORT)



■ Black □ White

Description: Housing only, with MR16 lamp holder.  
Dimensions: Ø 55mm x L 114mm x H 131mm  
Light Compatibility: MR16 LED 220V

## HTR 339 (LONG)



■ Black □ White

Description: Housing only, with MR16 Lamp holder  
Dimension: Ø 55mm x L 140mm x H 132mm  
Compatibility: MR16 220v





# Halogen Tracklight Accessories

**TRACK RAIL**



Black White

Description: Track bar w/ top and tail  
 Sizes: 1 Meter / 1.5 Meters / 2 Meters / 3 Meters

**CROSS CONNECTOR**



Black White

Description: Track rail connector

**L CONNECTOR**



Black White

Description: Track rail connector

**TRACK RAIL TOP AND TAIL**



Black White

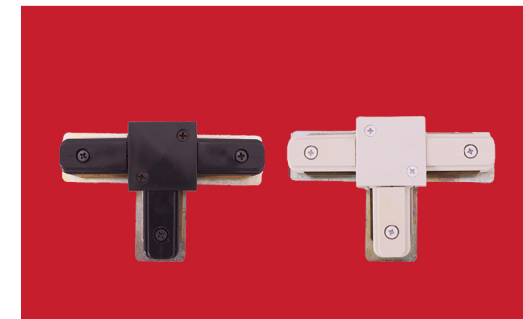
**TRACKLIGHT STEM FOR (HSP,HTB)**



Black White

Description: Tracklight Stem for (HSP & HTB)  
 Sizes: 12 inches / 18 inches

**T CONNECTOR**



Black White

Description: Track rail connector



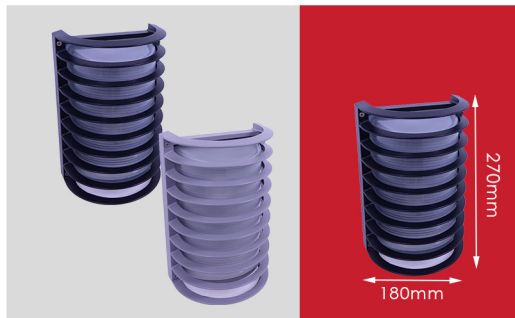
brilliant

## Surface Light

Fixtures that are designed to be mounted directly onto a surface such as a ceiling or wall rather than being recessed. Surface light fixtures houses one or more light sources such as LED modules, incandescent bulbs or integrated LED's. These Fixtures are a practical versatile lighting solution suitable for a wide range of indoor and outdoor application, including homes, offices, corridors, hallways, bathrooms, kitchen and commercial spaces to provide adequate illumination.



SL 613



Black Gray

Included: Housing only with E-27 lamp holder.

Description: Body and griled made of die-cast aluminum, glass diffuser, and stainless steel screw.

Dimensions: L 270mm x W 180mm x H 128mm

Light Compatibility: E27 / PL / PL-C

SL 614



Black Gray

Included: Housing only with E-27 lamp holder.

Description: Body and griled made of die-cast aluminum, glass diffuser and stainless steel screw.

Dimensions: L259mm x W131mm x H135mm

Light Compatibility: E27 / PL / PL-C

SL 628



Black Gray

Included: Housing only with E-27 lamp holder.

Description: Die-cast Aluminum with a white polycarbonate cover and stainless steel screw.

Dimensions: L 267mm x W 136mm x H 93mm

Light Compatibility: E27

SL 629



Black Gray

Included: Housing only with E-27 lamp holder.

Description: Die-cast Aluminum with a white polycarbonate cover and stainless steel screw.

Dimensions: L 265mm x W 135mm x H 95mm

Light Compatibility: E27

SL 630



Included: Housing only with E-27 lamp holder.

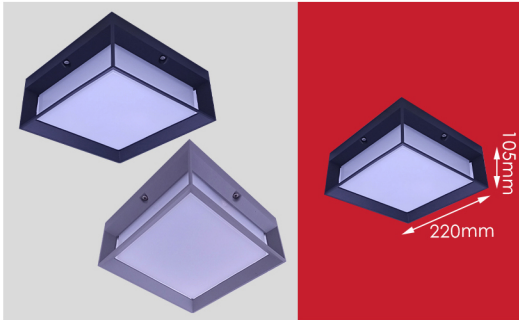
Description: Die-cast Aluminum with a white polycarbonate cover and stainless steel screw.

Dimensions: L 264mm x W 134mm x H 95mm

Light Compatibility: E27

Black Gray

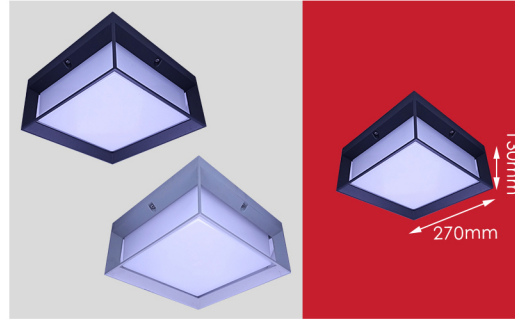
### SL 638 MEDIUM



■ Black ■ Gray

Included: Housing only with E-27 lamp holder.  
Description: Aluminum die-cast body, with white polycarbonate cover and stainless screws.  
Dimensions: L 220mm x W 220mm x H 105mm  
Light Compatibility: 1 x E27

### SL 638 LARGE



■ Black ■ Gray

Included: Housing only with E-27 lamp holder.  
Description: Aluminum die-cast body, with white polycarbonate cover and stainless screws.  
Dimensions: L270mm x W 270mm x H130mm  
Light Compatibility: 1 x E27

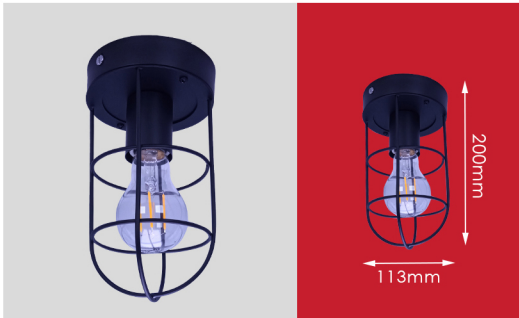
### SL 665



■ Black

Included: Housing only with E-27 lamp holder.  
Description: Glass Frame made in die-cast, tempered glass  
Dimensions: Ø 145mm x H 200mm  
Light Compatibility: E27

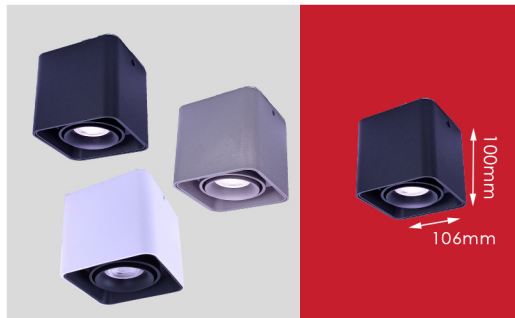
### SL 666



■ Black

Included: Housing only with E-27 lamp holder, bulb not included.  
Description: Metal cage body in a powder-coat paint finish.  
Dimensions: Ø 113mm x H 200mm  
Light Compatibility: E-27

### SL 667-1



■ Black ■ Gray ■ White/Black

Included: Housing with GU10 Lamp holder, bulb not included.  
Description: Die-cast aluminum body in a powder-coated paint finish.  
Angle: Directional.  
Dimensions: L106mm x W106mm x H 100mm  
Light Compatibility: 1 x GU10

### SL 667-2



■ Gray ■ White/Black

Included: Housing with E-27 lamp holder, bulb not included.  
Description: Die-cast aluminum body in a powder-coated paint finish.  
Angle: Directional  
Dimensions: L203mm x W106mm x H 100mm  
Light Compatibility: 2 x GU10

### SL 669



Included: Housing fixture with GU10 lamp holder  
Description: Directional. Die-cast aluminum body in a powder-coated paint finish.  
Dimensions: Ø73mm x H 112mm  
Light Compatibility: GU10

■ Black/Black ■ White/Black



### SL 670-1



■ Black/Black □ White/Black

Included: Housing fixture with GU10 lamp holder.  
Description: Die-cast aluminum body in a powder-coated paint finish.

Angle: Directional

Dimensions: L125mm x W 125mm x H 30mm

Light Compatibility: GU10

### SL 670-2



■ Black/Black □ White/Black

Included: Housing fixture with GU10 lamp holder.  
Description: Die-cast aluminum body in a powder-coated paint finish.

Angle: Directional

Dimensions: L90mm x W 177mm X H 30mm

Light Compatibility: 2 x GU10





# Downlight

Downlight is a lighting fixture specifically designed to emit light in a downward direction. They are often installed within a recessed housing in the ceiling. Where they are partially or fully concealed. These fixtures are common choice for providing general illumination, task lighting in a variety of settings including residential commercial and hospitality spaces.



**DL 520-4" (W,S) BEEHIVE**



Included: Housing only with clips and E27 lamp holder.  
Description: Vertical Downlight, Metal Body in the powder-coated paint finish rim. With an aluminum reflector.  
Dimensions: Ø 139mm x H 165mm / Hole size Ø 115mm  
Reflector: Beehive  
Light Compatibility: E27 / PL / PLC

**DL 520-6" (W,S) BEEHIVE**



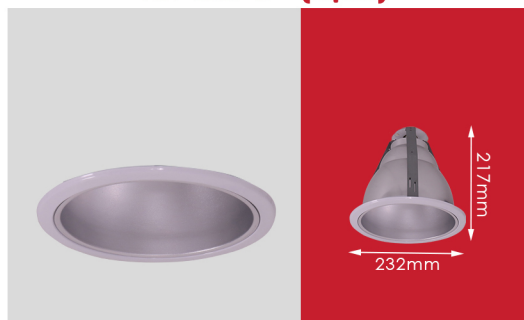
Included: Housing only with clips and E27 lamp holder.  
Description: Vertical Downlight, Metal Body in the powder-coated paint finish rim. With an aluminum reflector.  
Dimension: Ø 173mm x H 195mm / Hole Size Ø 144mm  
Reflector: Silver Beehive  
Light Compatibility: E27 / PL / PLC

**DL 520-8" (W,S) BEEHIVE**



Included: Housing only with clips E27 lamp holder.  
Description: Vertical Downlight, Metal Body in the powder-coated paint finish rim. With an aluminum reflector.  
Dimensions: Ø 232mm x H 217mm / Hole size Ø 200mm  
Reflector: Beehive  
Light Compatibility: E27 / PL / PLC

**DL 865 8" (W,SM)**



Included: Housing only with E27 lamp holder.  
Description: Vertical Downlight, Metal Body in the powder-coated paint finish rim. With an aluminum reflector.  
Dimension: Ø 232mm x H 217mm / Hole Size Ø 200mm  
Reflector: Silver Matte  
Light Compatibility: E27/PL/PLC

**DL 865-6" (W,S)**



Item: Housing only with clips and E27 lamp holder.  
Description: Vertical downlight. Metal body in a powder-coated paint finish rim. With an aluminum reflector.  
Dimension: Ø 173mm x H 195mm / Hole size Ø 144mm  
Reflector: Silver Plain  
Light Compatibility: E27 / PL /PLC

**DL 865-8" (W,S)**



Item: Housing only with clips and E27 lamp holder.  
Description: Vertical downlight. Metal body in a powder-coated paint finish rim. With an aluminum reflector.  
Dimension: Ø 232mm x H 217mm / Hole size Ø 200mm  
Reflector: Silver Plain  
Light Compatibility: E27 / PL /PLC



brilliant

# Wall Lamp

Wall lamp is a lighting fixture designed to be mounted on vertical surfaces, such as walls, to provide illumination. These fixtures come in various styles, shapes, and sizes. Designed to emit light either upward, downward or in both directions. These are suitable for indoor application, such as living rooms, bed rooms and out door application and can be installed on the exterior walls of buildings, porches, or outdoor seating areas.



WL 861-XS



Black Gray

Included: Housing only with an E27 lamp holder  
Description: Aluminum casting body with tempered glass.  
Dimensions: Ø 64mm x H 160mm  
Light Compatibility: E27

WL 861-S



Black Gray

Included: Housing only with an E27 lamp holder  
Description: Aluminum casting body with tempered glass.  
Dimensions: Ø 90mm x H 157mm  
Light Compatibility: E27

WL 861-M



Black Gray

Included: Housing only with an E27 lamp holder  
Description: Aluminum casting body with tempered glass.  
Dimensions: Ø 110mm x H202mm  
Light Compatibility: E27

WL 861-L



Black Gray

Included: Housing only with E27 lamp holder.  
Description: Aluminum casting body with tempered glass  
Dimensions: Ø 142mm x H283mm  
Light Compatibility: E27

### WL 862-XS



■ Black ■ Gray

Included: Housing only with an E27 lamp holder  
Description: Aluminum casting body with tempered glass.  
Dimensions: Ø 65mm x H261mm  
Light Compatibility: 2 x E27

### WL 862-S



■ Black ■ Gray

Included: Housing only with an E27 lamp holder  
Description: Aluminum casting body with tempered glass.  
Dimensions: Ø 90mm x H261mm  
Light Compatibility: 2 x E27

### WL 862-M



■ Black ■ Gray

Included: Housing only with an E27 lamp holder  
Description: Aluminum casting body with tempered glass.  
Dimensions: Ø 110mm x H300mm  
Light Compatibility: 2 x E27

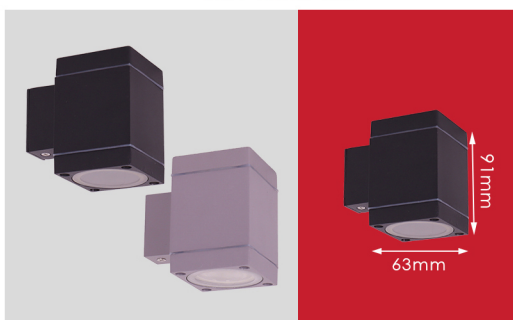
### WL 862-L



■ Black ■ Gray

Included: Housing only with an E27 lamp holder  
Description: Aluminum casting body with tempered glass.  
Dimensions: Ø 147mm x H 381mm  
Light Compatibility: 2 x E27

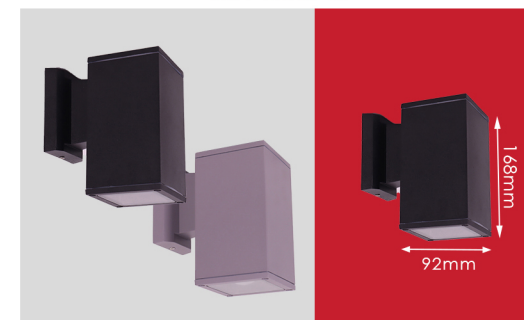
### WL 876-XS



■ Black ■ Gray

Included: Housing only with GU10 lamp holder  
Description: Aluminum casting body with tempered glass.  
Dimensions: L 63mm x W 63mm x H91mm  
Light Compatibility: 1 x GU10

### WL 876-S



■ Black ■ Gray

Included: Housing only with E27 lamp holder  
Description: Aluminum casting body with tempered glass.  
Dimensions: L92mm x W92mm x H168mm  
Light Compatibility: 1 x E27

### WL 876-M

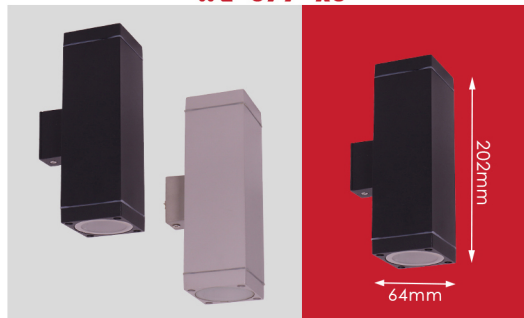


Included: Housing only with E27 lamp holder  
Description: Aluminum casting body with tempered glass.  
Dimensions: L122mm x W122mm x H205mm  
Light Compatibility: 1 x E27

■ Black ■ Gray



### WL 877-XS



Black Gray

Included: Housing only with GU10 lamp holder  
Description: Aluminum casting body with tempered glass.  
Dimensions: L 64mm x W 64mm x H 202mm  
Light Compatibility: 2 x GU10

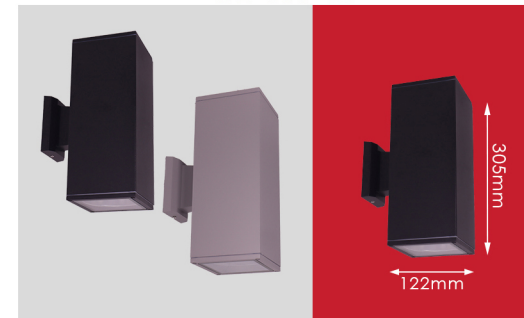
### WL 877-S



Black Gray

Included: Housing only with E27 lamp holder  
Description: Aluminum casting body with tempered glass.  
Dimensions: L 92mm x W 92mm x H 263mm  
Light Compatibility: 2 x E27

### WL 877-M



Black Gray

Included: Housing only with E27 lamp holder  
Description: Aluminum casting body with tempered glass.  
Dimensions: L 122mm x W 122mm x H 305mm  
Light Compatibility: 2 x E27

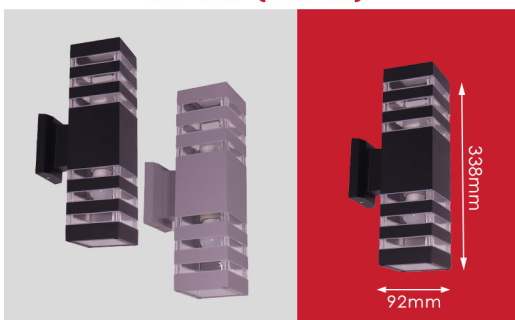
### WL 881 (ROUND)



Black Gray

Included: Housing only with an E27 lamp holder  
Description: Aluminum casting body with tempered glass.  
Dimensions: RD - Ø 90mm x H 340mm  
Light Compatibility: 2 x E27

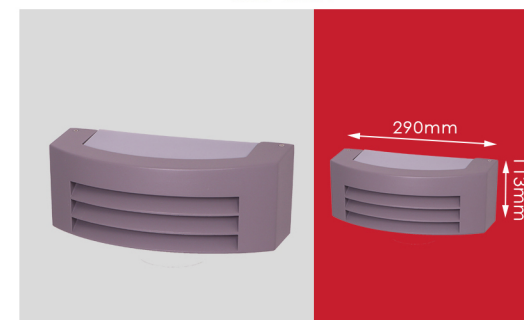
### WL 881 (SQUARE)



Black Gray

Included: Housing only with an E27 lamp holder  
Description: Aluminum casting body with tempered glass.  
Dimensions: SQ - L 92mm x W 92mm x H 338mm  
Light Compatibility: 2 x E27

### WL 882



Gray

Included: Housing only with an E27 lamp holder  
Description: Aluminum casting body with tempered glass.  
Dimensions: L 290mm x W 127mm x H 113mm  
Light Compatibility: 2 x E27

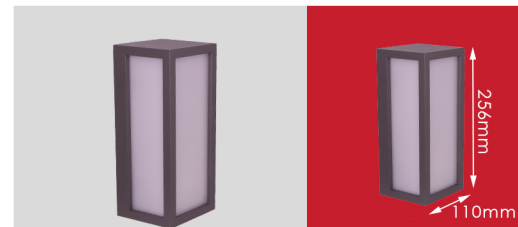
### WL 883-A



Included: Housing only with an E27 lamp holder  
Description: Aluminum casting body with a diffuser.  
Dimensions: L 251mm x W 106mm x H 110mm  
Light Compatibility: 1 x E27

Gray

### WL 883-B

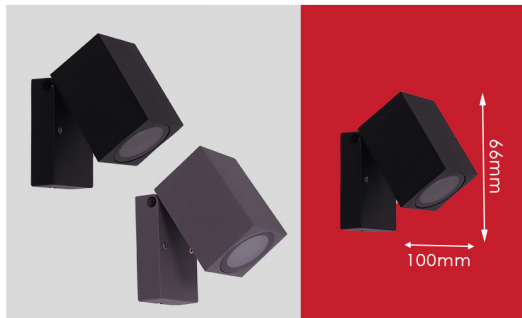


Included: Housing only with an E27 lamp holder  
Description: Aluminum casting body with a diffuser.  
Dimensions: L 256mm x W 110mm x H 103mm  
Light Compatibility: 1 x E27

Gray



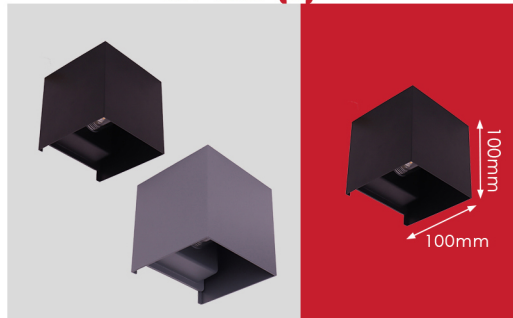
### WL 884



■ Black ■ Gray

Included: Housing only with a GU10 lamp holder  
Description: Aluminum casting body with tempered glass.  
Dimensions: L100mm x W66mm x H95mm  
Light Compatibility: 1 x GU10

### WL 885 (C) LED



■ Black ■ Gray

Included: (C) Complete Set W/ LED G9 3 Watt  
Dimension: L100mm x W100mm x H 100mm  
Power Consumption: 3W  
Color Temperature: Warm White 3000k  
Lamp Type: G9 Bulb

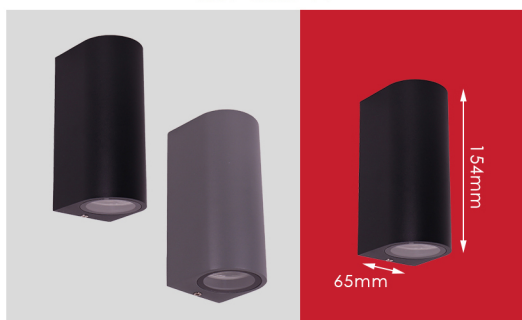
### WL 886-1



■ Black ■ Gray

Included: Housing only with GU10 lamp holder.  
Description: Aluminum casting body with tempered glass.  
Dimension: L80mm x W65mm x H81mm  
Lamp Type: 1 x GU10

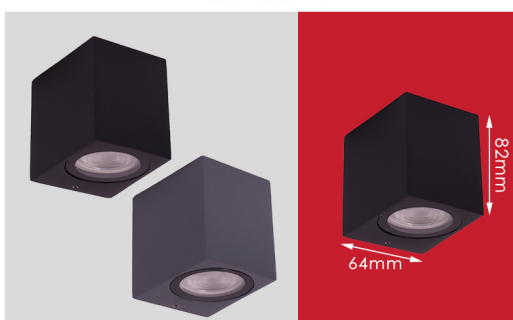
### WL 886-2



■ Black ■ Gray

Included: Housing only with GU10 lamp holder.  
Description: Aluminum casting body with tempered glass.  
Dimension: L76mm x W65mm x H154mm  
Lamp Type: 2 x GU10

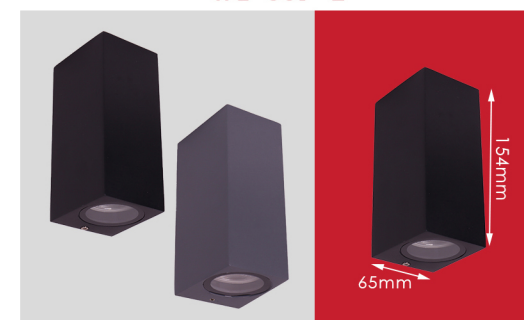
### WL 887-1



■ Black ■ Gray

Included: Housing only with GU10 lamp holder.  
Description: Aluminum casting body with tempered glass.  
Dimension: L80mm x W64mm x H82mm  
Lamp Type: 1 x GU10

### WL 887-2



■ Black ■ Gray

Included: Housing only with GU10 lamp holder.  
Description: Aluminum casting body with tempered glass.  
Dimension: L 76mm x W 65mm x H 154mm  
Lamp Type: 2 x GU10



brilliant

## Post Lamp

Post lamp is an outdoor lighting fixture designed to be mounted on posts, poles or pedestals to provide illumination in exterior spaces. These fixtures are commonly used for enhancing the safety and security of outdoor areas as well as for adding decorative elements to landscapes. Designed to be weather resistant and durable. Typically feature a housing that houses light sources such as LED Bulbs. They are commonly used in gardens along pathways, driveways or near entrances.



P-931 6"



Black White

Included: Housing only with an E27 lamp holder  
Description: Outdoor with Grill and half-clear globe diffuser.  
Dimension: L210mm x W210mm x H302mm / Globe - Ø 6"  
Light Compatibility: E27

P-932 8"



Black White

Included: Housing only with an E27 lamp holder  
Description: Outdoor with Grill and half-clear globe diffuser.  
Dimension: L 248mm x W 248mm x H 350mm / Globe - Ø 8"  
Light Compatibility: E27

P-965



Black

Included: Housing only with an E27 lamp holder  
Description: Outdoor with Glass Grill Diffuser  
Dimension: L213mm x W213mm x H323mm  
Light Compatibility: E27

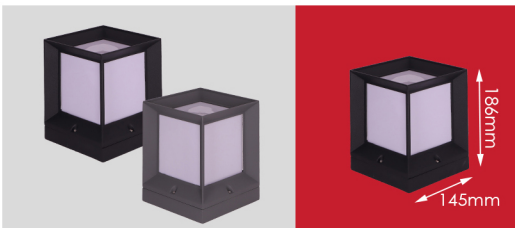
P-967



Brown

Included: Housing only with an E27 lamp holder  
Description: Die-cast aluminum with Acrylic Diffuser.  
Dimension: L201mm x W 201mm x H515mm (Base: 120mm x 120mm)  
Light Compatibility: E27

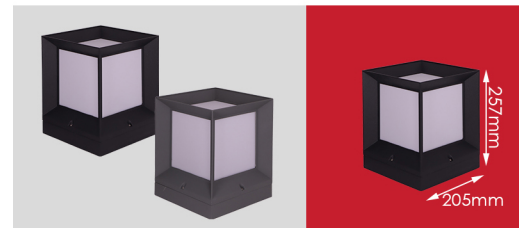
P-968 6"



Black Gray

Included: Housing only with E27 lamp holder.  
Description: Aluminum die-cast with Acrylic diffuser.  
Dimension: L 145mm x W145mm x H186mm  
Light compatibility: E27

P-968 8"



Black Gray

Included: Housing only with E27 lamp holder.  
Description: Aluminum die-cast with Acrylic diffuser.  
Dimension: L 205mm x W205mm x H257mm  
Light compatibility: E27



brilliant

## High Bay

High bay fixtures are engineered to provide powerful and uniform illumination over a large area, compensating for the height at which they are installed often utilize specialized reflectors and optics to distribute light efficiently and minimize glare. These fixtures can use various types of light sources, including high-intensity discharge (HID) lamps and LED. These fixtures are commonly use in industrial and commercial setting such as warehouse, manufacturing facilities, gymnasiums and large retail spaces where a significant amount of light is needed at high mounting heights.



### HB-1305 16" DOT-MATT



Included: Housing only, Aluminum Reflector w/ aluminum die-cast Gray base w/ E27 Socket.  
Reflector: Dotted - Matte  
Dimension: Ø 388mm x H 350mm  
Compatibility: E27 / E40

### HB-1305 16" SV-BH



Included: Housing only, Aluminum Reflector w/ aluminum die-cast Gray base w/ E27 Socket.  
Reflector: Silver - Beehive  
Dimension: Ø 385mm x H 327mm  
Compatibility: E27 / E40

### HB-1305 16" SV-DOT



Included: Housing only, Aluminum Reflector w/ aluminum die-cast Gray base w/ E27 Socket.  
Reflector: Silver - Dotted  
Dimension: Ø 380mm x H 320mm  
Compatibility: E27 / E40

### HB-1305 16" SV-PLN



Included: Housing only, Aluminum Reflector w/ aluminum die-cast Gray base w/ E27 Socket.  
Reflector: Silver - Plain  
Dimension: Ø 380mm x H 330mm  
Compatibility: E27 / E40

### HB-1305 18" SV-PLN



Included: Housing only, Aluminum Reflector and aluminum die-cast Gray base w/ E27 Socket.  
Reflector: Silver - Plain  
Dimension: Ø 460mm x H 375mm  
Compatibility: E27 / E40



### HB-1305A 18" MATTE



Included: Housing only, Aluminum Reflector and aluminum die-cast Gray base w/ E27 Socket.  
Reflector: Matte  
Dimension: Ø 465mm x H 375mm  
Compatibility: E27 / E40

### HB-1305A 18" SV-DOT



Included: Housing only, Aluminum Reflector and aluminum die-cast Gray base w/ E27 Socket.  
Reflector: Silver - Dotted  
Dimension: Ø 462mm x H 375mm  
Compatibility: E27 / E40

### HB-1305A 18" SV-MATT



Included: Housing only, Aluminum Reflector and aluminum die-cast Gray base w/ E27 Socket.  
Reflector: Silver - Matte  
Dimension: Ø 460mm x H 375mm  
Compatibility: E27 / E40

### HB-1305A 18" SV-PLN



Included: Housing only, Aluminum Reflector and aluminum die-cast Gray base w/ E27 Socket.  
Reflector: Silver - Plain  
Dimension: Ø 460mm x H 375mm  
Compatibility: E27 / E40

### HB-1306



Description: Housing only, Aluminum Reflector w/ aluminum Die-cast gray base w/ E27 socket.  
Dimensions: Ø 14" (Ø 355mm x H405mm)  
Light Compatibility: E27

### HB-1309



Description: Housing only, Aluminum Reflector and aluminum die-cast Gray base w/ E27 Socket.  
Dimension: Ø 21" (Ø 535mm x 540mm)  
Compatibility: E27

### HB-1310



Included: Housing only with an aluminum reflector and aluminum die-cast gray base w/ E27 Socket.  
Dimensions: Ø 11" (Ø 280mm x 290mm)  
Light Compatibility: E27



**HB-1320 10"**



Description: Housing only with aluminum die-cast socket holder for E27 with chain. Aluminum reflectorized with tempered glass cover.  
Dimensions: Ø 250mm x H 260mm  
Light Compatibility: E27

**HB-1320 12"**



Description: Housing only with aluminum die-cast socket holder for E27 with chain. Aluminum reflectorized with tempered glass cover.  
Dimensions: Ø 298mm x H 320mm  
Light Compatibility: E27

**HB-1320 14"**



Description: Housing only with aluminum die-cast socket holder for E27 with chain. Aluminum reflectorized with tempered glass cover.  
Dimensions: Ø 370mm x H 345mm  
Light Compatibility: E27

**HB-1320 16"**



Description: Aluminum cast socket holder (E-27) with chain. Reflectorized aluminum. w/o glass cover.  
Dimensions: Ø 415mm x H 363mm  
Light Compatibility: E27



brilliant

## Low Bay

Low bay is a lighting fixture specifically designed for spaces with lower ceiling heights typically ranging from 12 to 20 feet (approximately 3.7 to 6.1 meters). These fixtures are used in various indoor settings, such as warehouse, workshops and efficient lighting is required and can incorporate various types of light sources such as high intensity discharge (HID) or LED modules.



### LB-1401 BR



■ Brown

Included: Housing only with E-27 socket

Description: The body is composed of a die-cast metal finish with a prismatic diffuser.

Dimensions: Ø 380mm x H 210mm

Light Compatibility: E27

### LB-1403



■ Black

Included: Housing only with E-27 socket.

Description: The body is composed of a die-cast metal finish with a prismatic diffuser and socket.

Dimensions: L 310mm x W 310mm x H 235mm

Light Compatibility: E27

### LB-1404 BK



■ Black □ White

Included: Housing only with lamp holder only.

Description: The body is composed of a die-cast metal finish with an Acrylic clear diffuser.

Dimensions: Ø 366mm x H 372mm

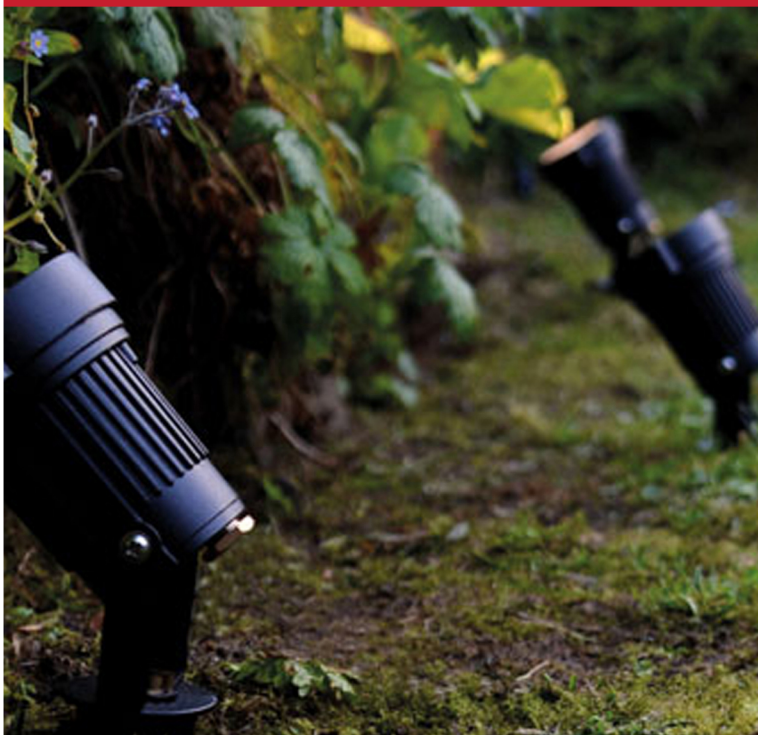
Light Compatibility: E27/E40



brilliant

## Garden Light

Garden light is an outdoor lighting fixtures specifically designed for use in gardens and outdoor landscapes. They are strategically placed to provide illumination highlight landscape features and enhance overall appearance and functionality of outdoor spaces during nighttime hours. These fixtures come in a variety of styles, sizes and types offering versatility in terms of lighting effects and design choices. Constructed to withstand exposure to various weather conditions they are built to resist corrosion and deterioration ensuring long lasting performance in outdoor settings.



### GL-1611



■ Black

Included: Housing only with MR-16 socket

Description: Spike Type. Aluminum die-cast body in a powder-coated finish, with tempered glass lens. Weatherproof.  
Dimension: Ø 100mm x H 310mm  
Compatibility: MR16

### GL-1612

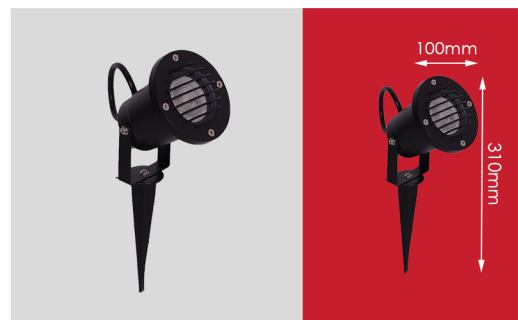


■ Black

Included: Housing only with MR-16 socket

Description: Spike Type. Aluminum die-cast body in a powder-coated finish, with tempered glass lens. Weatherproof.  
Dimension: Ø 100mm x H 310mm  
Compatibility: MR16

### GL-1613



■ Black

Included: Housing only with MR-16 socket

Description: Spike Type. Aluminum die-cast body in a powder-coated finish, with tempered glass lens. Weatherproof.  
Dimension: Ø 100mm x H 310mm  
Compatibility: MR16

### GL-1616



■ Black

Included: Housing only with PL lamp holder.

Description: Spike Type. Die-cast body.  
Dimension: L 238mm x W 75mm x H 415mm  
Compatibility: PL 9W

### GL-1617-1 BASE TYPE



■ Black

Included: Housing only with E-27 lamp holder.

Description: Spike Type or Base Type. Die-cast body.  
Dimension: Ø 75mm x H 220mm (Base: Ø 75mm)  
Compatibility: E27 1x PAR38



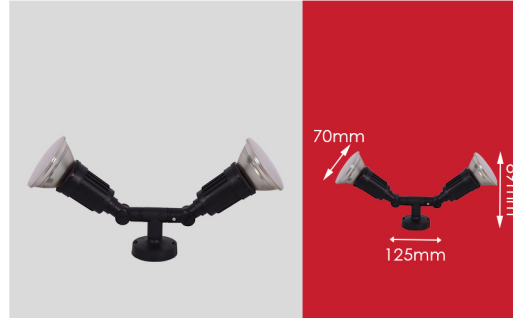
### GL-1617-1 SPIKE TYPE



■ Black

Included: Housing only with E-27 lamp holder.  
Description: Spike Type. Die-cast body.  
Dimension: Ø 70mm x H 370mm  
Compatibility: E27 1x PAR38

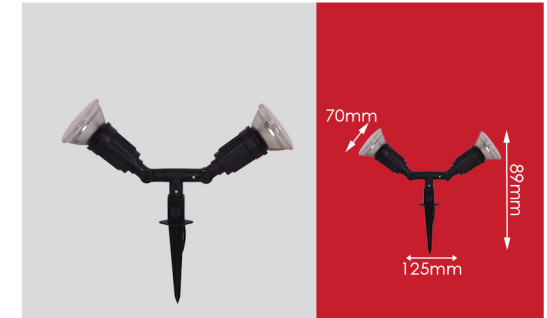
### GL-1617-2 BASE TYPE



■ Black

Included: Housing only with 2x E-27 lamp holder.  
Description: Base Type. Die-cast body.  
Dimension: (Ø 70mm x L125mm) x H 89mm  
Compatibility: 2 x E27 PAR38

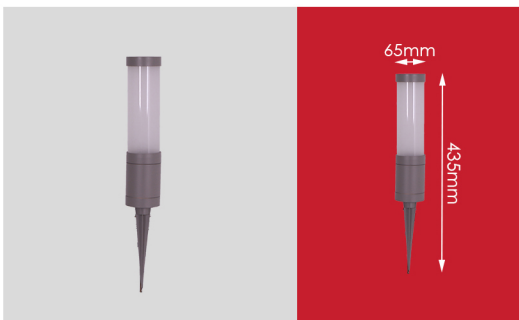
### GL-1617-2 SPIKE TYPE



■ Black

Included: Housing only with 2x E-27 lamp holder.  
Description: Spike Type. Die-cast body.  
Dimension: (Ø 70mm x L125mm) x H 89mm  
Compatibility: 2 x E27 PAR38

### GL-1618



■ Gray

Included: Housing with E27 lamp holder.  
Description: Spike Type. die-cast aluminum body, powder-coated finish. Glass Diffuser.  
Dimension: Ø 65mm x H 435mm  
Compatibility: E-27

### GL-1619



■ Black ■ Gray

Included: Housing with E-27 lamp holder.  
Description: Bollard Type. die-cast aluminum body, powder-coated finish. Glass Diffuser.  
Dimension: Ø 105mm x H 600mm  
Compatibility: E27

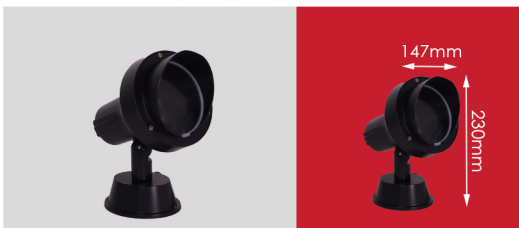
### GL-1624A- S



■ Gray

Included: Housing with MR-16 lamp holder.  
Description: Base Type. Die-cast body with glass cover.  
Dimension: Ø 73mm x H 174mm (Base Ø95mm)  
Compatibility: MR16

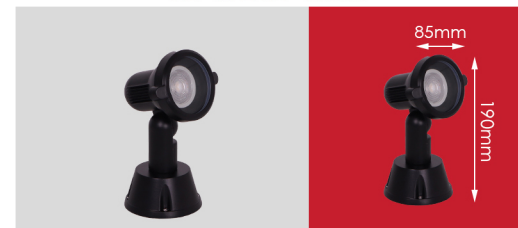
### GL-1624A- L



■ Black

Included: Housing with E27 lamp holder.  
Description: Base Type. Die-cast body with glass cover.  
Dimension: Ø 147mm x H230mm (Base Ø 140mm)  
Compatibility: E27

### GL-1624B MR16



■ Black

Included: Housing only with MR16 lamp holder.  
Description: Base Type. Die-cast body with lamp holder.  
Dimension: Ø 85mm x H190mm (Base Ø 95mm)  
Compatibility: MR16/GU10



### GL-1628



Black Gray

Included: Housing only with E-27 lamp holder.  
Description: Bollard Type. Die-cast aluminum body with glass diffuser.  
Dimension: L120 x W 120 x H195mm (Base: 165 x 165mm)  
Compatibility: E27

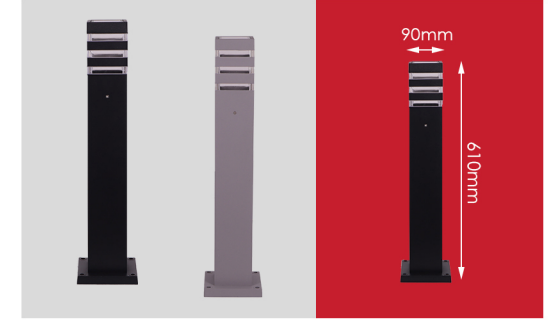
### GL-1629 RD



Black Gray

Included: Housing only with E-27 lamp holder.  
Description: Bollard Type. Die-cast aluminum body with glass diffuser.  
Dimension: Ø 110mm x H 602mm (Base: Ø 157mm)  
Compatibility: E27

### GL-1629 SQ



Black Gray

Included: Housing only with E-27 lamp holder.  
Description: Bollard Type. Die-cast aluminum body with glass diffuser.  
Dimension: L 90 x W 90x H 610mm (Base: 142 x 142mm)  
Compatibility: E27

### GL-1630



Black

Included: Housing only with E-27 lamp holder.  
Description: Bollard Type. Die-cast aluminum body.  
Dimension: Ø 150mm x H600mm (Base: Ø 215mm)  
Compatibility: E27

### GL-1652



Brown

Included: Housing only with E-27 lamp holder.  
Description: Die-cast aluminum body with glass diffuser and chain.  
Dimension: Ø 228mm x H 337mm  
Compatibility: E27

### GL-1653



Brown

Included: Housing only with E-27 lamp holder.  
Description: Die-cast aluminum body with glass diffuser.  
Dimension: Ø 177 x 470mm (Base: Ø 150mm)  
Compatibility: E27

### GL-1654



Included: Housing only with E-27 lamp holder.  
Description: Bollard Type. Body, base, and accessories in die-cast aluminum with glass diffuser.  
Dimension: Ø 200 x 650mm (Base: Ø 155mm)  
Compatibility: E27

Brown



brilliant

## Step Light

A lighting fixture designed to illuminate staircases, steps, and other similar architectural features for safety and aesthetic purposes. Step light fixtures come in various shapes and sizes including recessed or surface mounted options and can use various types of light sources such as LED bulbs, incandescent bulbs or compact fluorescent lamps (CFLs). They are commonly used in residential and commercial settings to enhance both the functionality visual appeal of staircases and steps while preventing accidents caused by poor visibility.



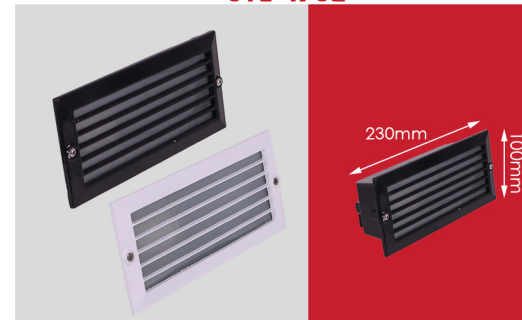
### STL-1701



■ Black □ White

Included: Housing only with E-27 lamp holder.  
Description: Recess type. Aluminum die-cast body in a powder-coated finish. Tempered glass. Weatherproof.  
Dimension: L 230mm x W 100mm x H 84mm  
Compatibility: E27  
Hole Size: L 225mm x W 85mm

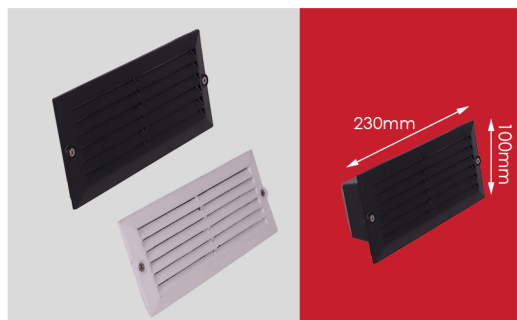
### STL-1702



■ Black □ White

Included: Housing only with E-27 lamp holder.  
Description: Recess type. Aluminum die-cast body in a powder-coated finish. Tempered glass. weatherproof.  
Dimension: L 230mm x W 100mm x H 84mm  
Compatibility: E27  
Hole Size: L 225mm x W 85mm

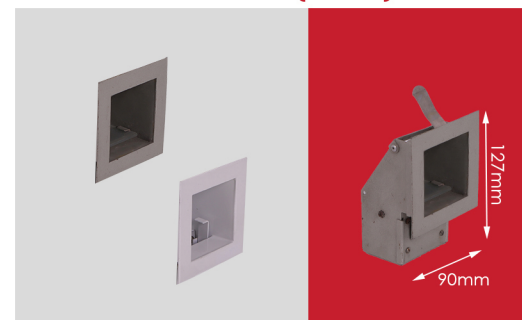
### STL-1703



■ Black □ White

Included: Housing only with E-27 lamp holder.  
Description: Recess type. Aluminum die-cast body in a powder-coated finish. weatherproof.  
Dimension: L 230mm x W 100mm x H 84mm  
Compatibility: E27  
Hole Size: L 225mm x W 85mm

### STL-1706 (SMALL)



■ Gray □ White

Included: Housing only with G4 lamp holder.  
Description: Recess type. Aluminum die-cast body in a powder-coated finish. weatherproof.  
Dimension: L 90mm x W 84mm x H 127mm  
Compatibility: G4 LED Bulb  
Hole Size: L 68mm x W 65mm

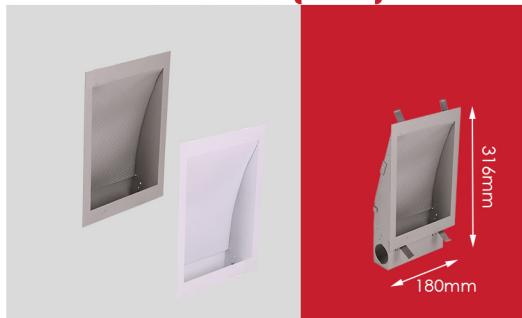
### STL-1706 (MEDIUM)



Included: Housing only with PL lamp holder.  
Description: Recess type. Aluminum die-cast body in a powder-coated finish. weatherproof.  
Dimension: L 180mm x W 79mm x H 130mm  
Compatibility: PL  
Hole Size: L 156mm x W 70mm

■ Gray □ White

### STL-1706 (LARGE)



■ Gray □ White

Included: Housing only with PL lamp holder.  
Description: Recess type. Aluminum die-cast body in a powder-coated finish. Weatherproof.  
Dimension: L 180mm x W 68mm x H 316mm  
Compatibility: PL 9w  
Hole Size: L 235mm x W 156mm

### STL-1707



■ Black ■ Gray

Included: Housing only with G4 lamp holder.  
Description: Surfaced. Aluminum die-cast body in a powder-coated finish. Tempered glass, weatherproof.  
Dimension: L 105mm x W 105mm x H 42mm  
Compatibility: G4 LED Bulb

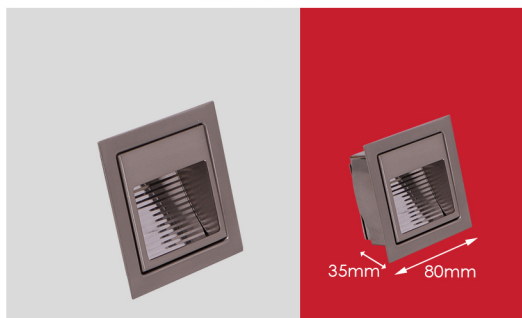
### STL-1708



■ Black ■ Gray

Included: Housing only with G4 lamp holder.  
Description: Surfaced. Aluminum die-cast body in a powder-coated finish. Weatherproof.  
Dimensions: L 107mm x W 107mm x H 42mm  
Light Compatibility: G4 LED Bulb

### STL-1709



■ Chrome

Included: Housing only with G4 lamp holder.  
Description: Recess type. Aluminum die-formed. Chrome plated.  
Dimensions: L 80 x W 80 x H 35mm  
Compatibility: G4 LED Bulb  
Hole Size: L 63mm x W 63mm

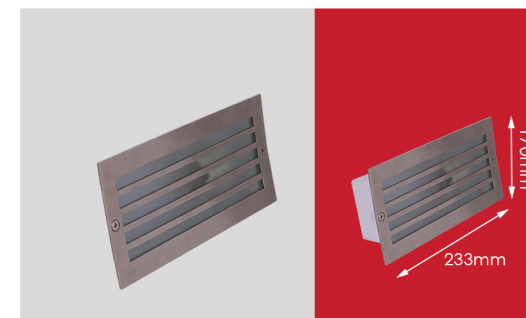
### STL-1711



■ Gray

Included: Housing only with E-27 lamp holder.  
Description: Recess type. Aluminum die-cast body in a powder-coated finish. Tempered glass, Weatherproof.  
Dimension: L 233 x W 102 x H 170mm  
Compatibility: E27  
Hole Size: L 225mm x W 85mm

### STL-1712



■ Gray

Included: Housing only with E-27 lamp holder.  
Description: Recess type. Aluminum die-cast body in a powder-coated finish. Tempered glass, Weatherproof.  
Dimension: L 233 x W 102 x H 170mm  
Compatibility: E27  
Hole Size: L 225mm x W 85mm





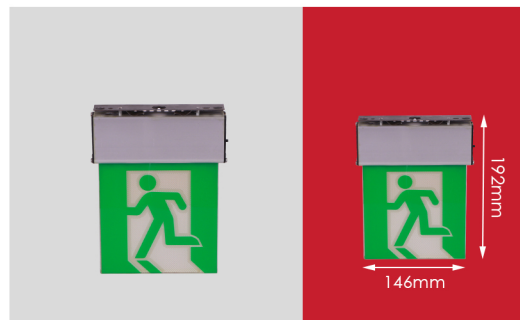
brilliant

## Signages

Signage lighting refers to the illumination provided to exit signs in building, structures or areas to make them clearly visible and easily identifiable especially in emergency situations. These signs are essential part of building safety and designed to guide occupants to the nearest exit during fires, power outages or emergencies when visibility may be limited.

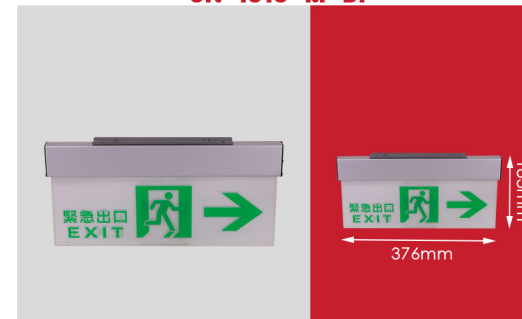


SN-1816 S



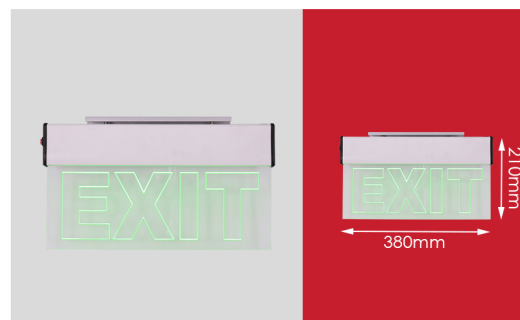
Description: Ceiling type  
Item Size: L146mm x W 30mm x H 192mm  
Power Consumption: 1.7w  
Battery: Ni-Cd 3.6v 300mAh  
Voltage: 110-220v

SN-1816 M DF



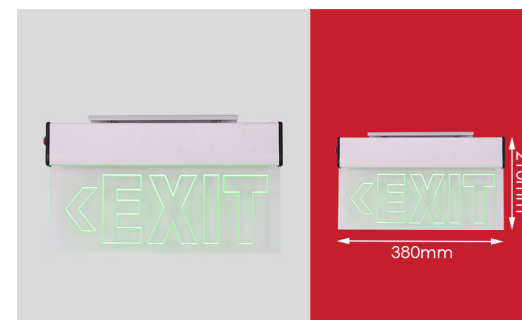
Description: Ceiling Type, Running man Exit, Double Face  
Dimension: L376mm x W 28mm x H 183mm  
Power Consumption: 3.7w  
Battery: Ni-Cd 3.6v  
Voltage: 110-220v

SN-1817



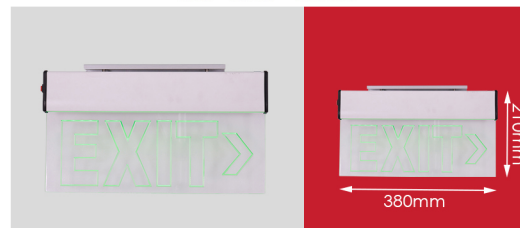
Description: Ceiling Type, Acrylic Engraved, LED.  
Item Size: L 380mm x W 30mm x H 210mm  
Power Consumption: 3.9W LED  
Battery: NI-MH 3.6V 800mah  
Light Duration: 1.5 hr Usage  
Charging Time: 36hrs.

SN-1817 LEFT



Description: Ceiling Type, Acrylic Engraved, LED.  
Item Size: L 380mm x W 30mm x H 210mm  
Power Consumption: 3.9W LED  
Battery: NI-MH 3.6V 800mah  
Light Duration: 1.5 hr Usage  
Charging Time: 36hrs.

SN-1817 RIGHT



Description: Ceiling Type, Acrylic Engraved, LED.  
Item Size: L 380mm x W 30mm x H 210mm  
Power Consumption: 3.9W LED  
Battery: NI-MH 3.6V 800mah  
Light Duration: 1.5 hr Usage  
Charging Time: 36hrs.

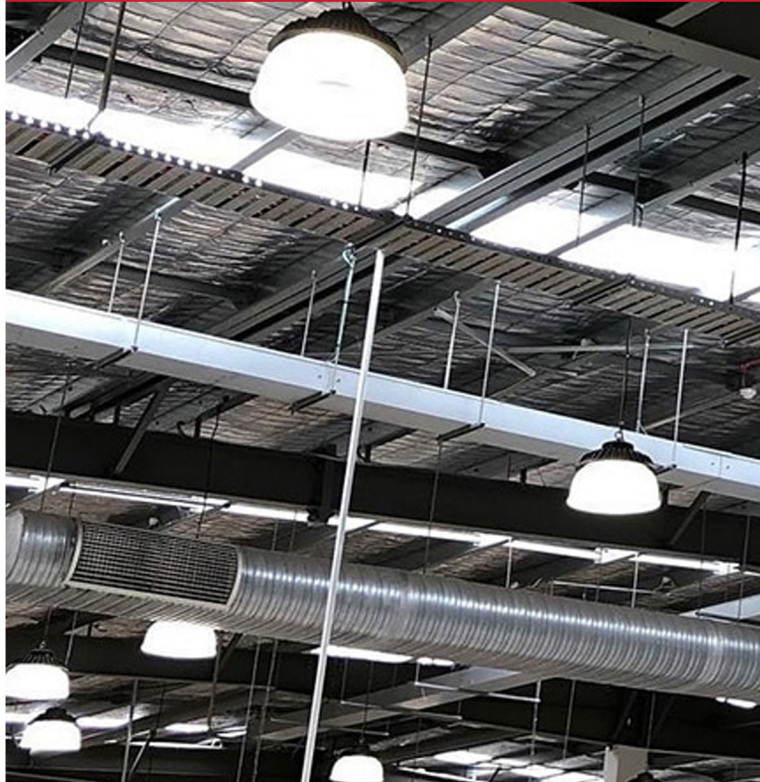




brilliant

## Prismatic Dome Reflector

A lighting fixtures commonly used in commercial and industrial settings. These fixtures are characterized by their design, which typically includes a prismatic or ribbed dome shaped diffuser made of acrylic or polycarbonate material. Prismatic dome fixtures are commonly used in areas such as offices, retail stores, workshops, factories, warehouses and other commercial or industrial settings where bright, uniform lighting is needed.



### PDR-1901 12"



Included: Housing only with E27 lamp holder.  
Description: Prismatic Reflector, Aluminum die-cast base (E27)  
Dimension: Ø 12" (Ø 317mm x H265mm)  
Light Compatibility: E27

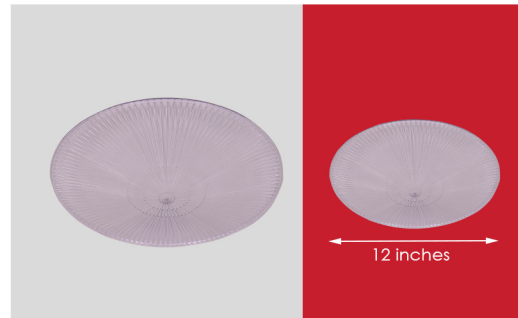
### PDR-1904 22"



Description: Prismatic Reflector, Aluminum die-cast base (E40)  
Dimension: Ø 22" (Ø 570mm x H427mm)  
Light Compatibility: E40

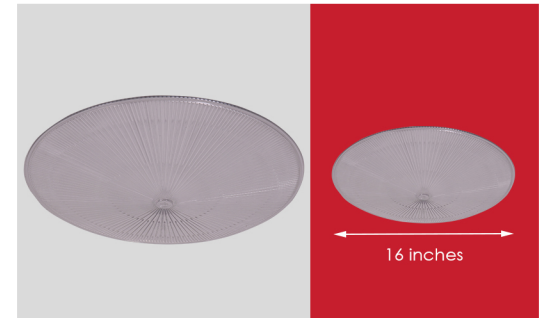
## ADD ONS

### PDR-1901 CONICAL LENS 12"



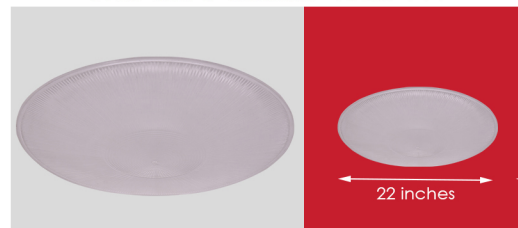
Description: Prismatic cover. Conical lens.  
PDR-1901 12" (needs ring to hold the cover)  
Dimensions: Ø 12"

### PDR-1903 CONICAL LENS 16"



Description: Prismatic cover. Conical lens.  
PDR-1903 16" (needs ring to hold the cover)  
Dimensions: Ø 16"

### PDR-1904 CONICAL LENS 22"



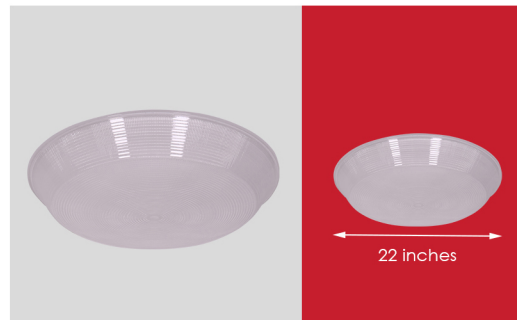
Description: Prismatic cover. Conical lens.  
PDR-1904 22" (needs ring to hold the cover)  
Dimensions: Ø 22"

### PDR-1903 DROP LENS 16"



Description: Prismatic cover. Drop lens.  
PDR-1903 16" (needs ring to hold the cover)  
Dimensions: Ø 16"

### PDR-1904 DROP LENS 22"

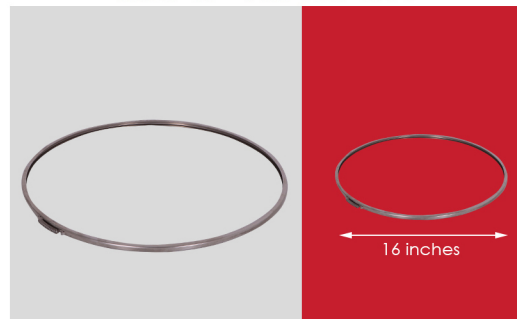


Description: Prismatic cover. Drop lens.  
PDR-1904 22" (needs ring to hold the cover)  
Dimensions: Ø 22"

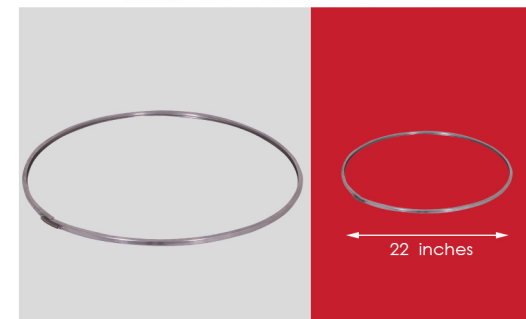
### RING 12" FOR PDR-1901



### RING 16" FOR PDR-1903



### RING 22" FOR PDR 1904





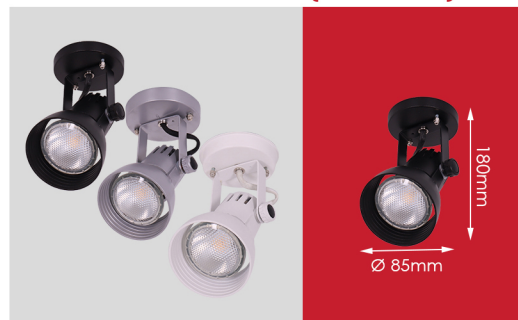
brilliant

## Spot Light

Spotlight fixtures designed to focus a concentrated beam of light on a specific area or object. Spot light fixtures are adjustable, they can be tilted or swiveled to change the direction of the light beam. Spot light can be mounted on ceilings, walls, tracks or as free standing fixtures depending on the specific application and design requirements can use variety of light sources, including halogen bulbs and LED lamps depending on the fixtures design and intended use. Commonly used in art galleries, museum, retail stores, theaters, restaurants, and residential spaces or any area or object that needs accent lighting.



### SPT-2001 SMALL (SPOT TYPE)



■ Black ■ Gray □ White

Included: Housing only with E-27 lamp holder.

Description: Spot Base Type. Aluminum Die-cast, powder-coated finish.

Dimension: Ø 85mm x L 120mm x H 180 (Base Ø 90mm)

Compatibility: E27 PAR20

### SPT-2001 SMALL (TRACK TYPE)



■ Black ■ Gray □ White

Included: Housing only with E-27 lamp holder.

Description: Track Type. Aluminum die-cast body, powder-coated finish.

Dimension: Ø 85mm x L 120mm x H 212mm

Compatibility: E27 PAR20

### SPT-2001 MEDIUM (SPOT TYPE)



■ Black ■ Gray □ White

Included: Housing only with E-27 lamp holder.

Description: Spot Base Type. Aluminum Die-cast, powder-coated finish

Dimension: Ø 115mm x L 130mm x H 180mm (Base Ø 90mm)

Compatibility: E27 PAR30

### SPT-2001 MEDIUM (TRACK TYPE)



■ Black ■ Gray □ White

Included: Housing only with E-27 lamp holder.

Description: Track Type. Aluminum die-cast body, powder-coated finish.

Dimension: Ø 115mm x L 130mm x H 223mm

Compatibility: E27 PAR30

### SPT-2002 L (SPOT TYPE)



■ Black ■ Gray □ White

Included: Housing only with E-27 lamp holder.  
Description: Spot base type. Aluminum die-cast body,  
Powder-coated finish.  
Dimension: Ø 142mm x L 184mm x H 240mm (Base Ø 90mm)  
Compatibility: E27 PAR38

### SPT-2002 L (TRACK TYPE)



■ Black ■ Gray □ White

Included: Housing only with E-27 lamp holder.  
Description: Aluminum die-cast body, powder-coated finish.  
Dimension: Ø 142mm x L 184mm x H 274mm  
Compatibility: E27 PAR38

### SPT-2004



■ Gray

Included: Housing only with E-27 lamp holder  
Dimension: Ø 50mm x 120mm (Base Ø 101mm)  
Compatibility: E27 PAR38



# Road Light

Fixtures designed for illuminating roads, streets, highways and other transportation routes enhancing road safety and visibility during nighttime hours or in low light conditions typically mounted on poles or structures along roadways and are strategically positioned to provide consistent and adequate illumination. Common light sources in road light fixtures include high pressure sodium (HPS), metal halide lamps and LED.



## RDL-2105



Included: Housing only with E-27 lamp holder.  
Dimension: L 540mm x W 205mm x H 150mm  
Compatibility: E27

☐ White

---

# Emergency Light

Emergency lights are specialized and designed to provide illumination during power outages or emergency situations. Emergency lights are equipped with rechargeable batteries that automatically activate when there is a loss of power. Strategically placed throughout buildings. Including corridors, stairwells, hallways and exit doors to provide a clear and well lit path to safety.



## EL-2311 COB



Item Size: L 310mm x W 83mm x H 140mm  
Input Voltage: 220V / 50-60Hz  
Output Light: 6V / 2 x 3W COB LED  
Battery: NP 6V 4 Ah

☐ White

---

# Vapor Lamp

Vapor lamp is designed to provide illumination in environments that are exposed to moisture, dust, or other potentially challenging conditions. made from rugged materials such as die-cast aluminum, fiberglass, or polycarbonate. sealed or gasketed design that prevents the ingress of dust, dirt, and moisture into the fixture's interior. Vapor lamp fixtures are commonly used in parking garages, industrial facilities, warehouses, food processing plants, tunnels, outdoor walkways, and marine applications.



## VL-2700



Included: Housing only with E-27 lamp holder.  
Description: Die-cast aluminum grill body and glass diffuser.  
Dimension: Ø 110mm x H 215mm  
Compatibility: E27

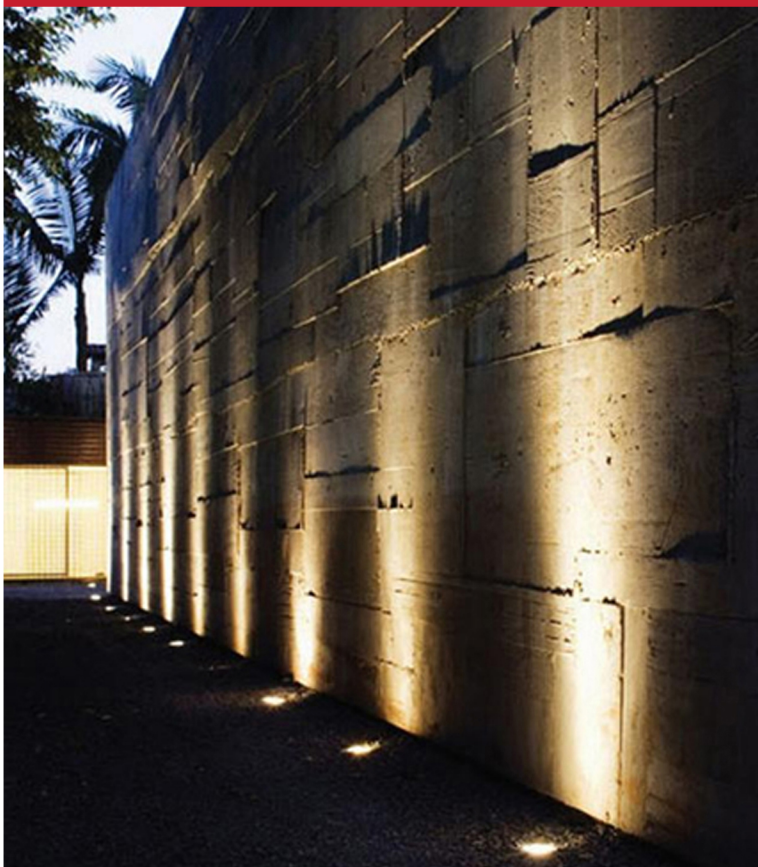
☐ Clear ☒ Red ☐ Green



brilliant

## Inground Light

Inground light designed to be installed flush with the ground or other surfaces, such as walls, steps or walkways. Constructed to withstand the weight of foot traffic, vehicles and outdoor environmental conditions typically made from durable materials like stainless steel, brass, aluminum or composite material, designed to be waterproof and weatherproof.



IL-2908


☐ Silver

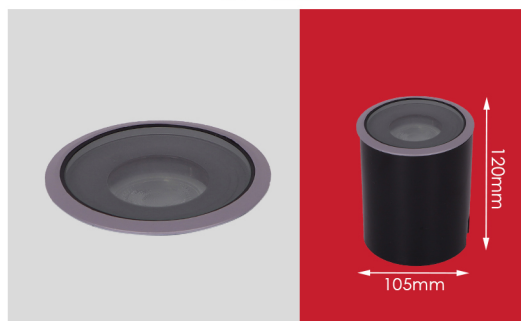
Included: Housing only with MR16 lamp holder.  
Description: Stainless rim, body, and frame made of die-cast aluminum, tempered glass cover, stainless screw, cylindrical support in thermoplastic material.  
Dimension: Ø 100mm x H 94mm  
Compatibility: MR16

IL-2909


☐ Silver

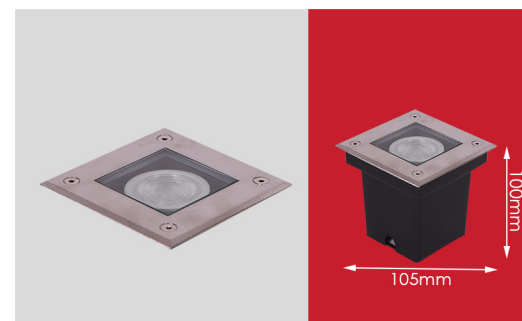
Included: Housing only with MR16 lamp holder.  
Description: Stainless rim, body, and frame made of die-cast aluminum, tempered glass cover, stainless screw, cylindrical support in thermoplastic material.  
Dimension: L 105mm x W 105mm x H 130mm  
Compatibility: MR16

IL-2910



Included: Housing only with MR16 lamp holder  
Description: Aluminum casting body with tempered glass  
Dimension: Ø 105mm x H 120mm  
Compatibility: MR16

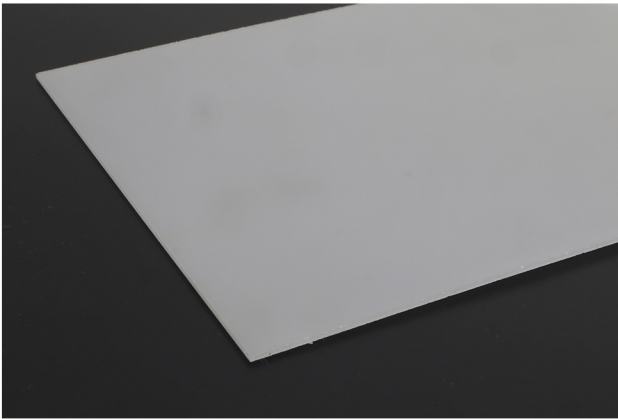
IL-2913


☐ Silver

Included: Housing only with MR16 lamp holder.  
Description: Stainless rim, body, and frame made of die-cast aluminum, tempered glass cover, stainless screw.  
Dimension: L 105mm x W 105mm x H 100mm  
Compatibility: MR16

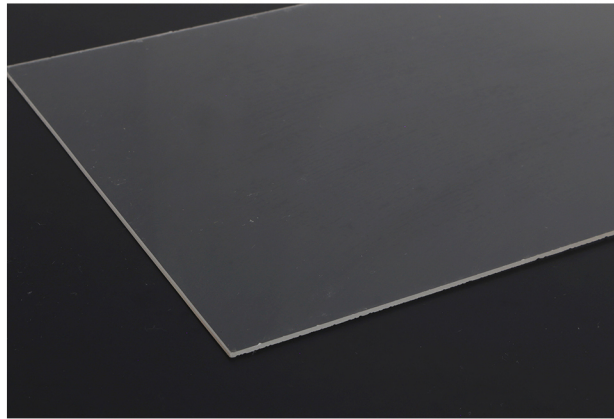
# BRILLIANT DIFFUSER

## ACRYLIC



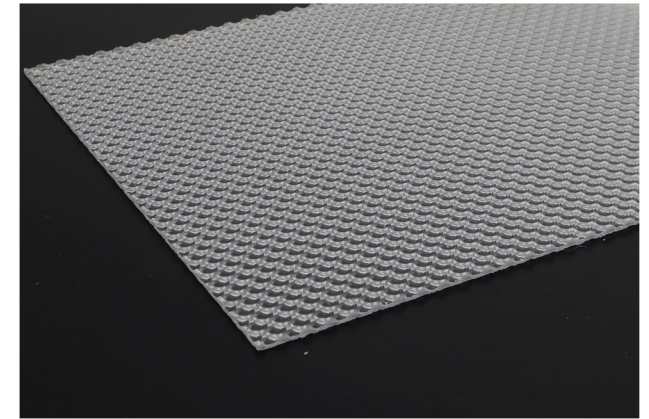
Description: Acrylic Sheet  
Dimension: 2" x 12" Max. 4' x 6'

## CLEAR



Description: Acrylic Sheet  
Dimension: 2" x 12" Max. 4' x 6'

## OPAL



Description: Prismatic Sheet  
Dimension: 12" x 12" Max 4' x 6'





Fluorescent Fixtures  
Halogen Downlight (HD)  
Halogen Tracklight (HTR)  
Surface Light  
Downlight (DL)  
Wall Lamp  
Post Lamp  
High Bay  
Low Bay luminaire  
Garden Light  
Step Light  
Signages  
Prismatic Dome Reflector  
Spot Light  
Road Light  
Emergency Light  
Vapor Lamp  
Inground Light

[metrolampslighting.com](http://metrolampslighting.com)